



पत्रोत्तरमा पत्र संख्या मिति उल्लेखित हुन अपेक्षित छ ।

नेपाल सरकार  
**वन तथा वातावरण मन्त्रालय**

EX: पो.ब.नं. : ३२८७  
सिंहदरवार, काठमाण्डौ

पत्र संख्या :-

चलानी नं. :-

प्राप्त पत्र संख्या र मिति :-

**सुचना !**

यस मन्त्रालयको संयोजनमा तयार गरिएको National Framework on Climate Change Induced Loss and Damage (L &D) को मस्यौदा प्रतिवेदनमा यस विषयसंग सम्बन्धित सरकारी/गैहसरकारी/नागरिक समाज/नीजि क्षेत्र तथा सबै सरोकारवाला संघ संस्था/व्यक्तिहरू वाट राय सुझाव तथा पृष्ठपोषण तपसिलको ठेगानामा १० दिन भित्र आइपुग्ने गरी उपलव्ध गराइदिनुहुन अनुरोध छ ।

तपशील

वन तथा वातावरण मन्त्रालय  
सिंहदरवार काठमाण्डौ  
फोन नम्बर ४२११९९७  
इमेल ठेगाना: [info@mofe.gov.np](mailto:info@mofe.gov.np)  
[hklaudari@gmail.com](mailto:hklaudari@gmail.com)



**Government of Nepal  
Ministry of Forests and Environment**

**National Framework on  
Climate Change Induced Loss and Damage  
(L&D)**

**September 2021**



**PUBLISHED BY**

Government of Nepal  
Ministry of Forests and Environment  
Singh Durbar, Kathmandu, Nepal  
Telephone: 977-14211567  
Toll-Free Number: 16600101000  
Fax: 977-1-4211868  
Email: info@mofe.gov.np

**Copyright @ 2021**

Ministry of Forests and Environment (MoFE), Government of Nepal

This publication may be used for educational and non-profit purposes, provided acknowledgment of the source is accurately made. Use of any part of it for a commercial purpose is strictly prohibited.

**Citation**

MoFE. (2021). National Framework on Climate-Induced Loss and Damage (L&D). Ministry of Forests and Environment, Government of Nepal. Kathmandu, Nepal.

**Cover page photographs front Credits:**

**Design and Print:**

# Table of Contents

<b>ACRONYMS</b> .....	<b>4</b>
<b>LIST OF TABLES</b> .....	<b>6</b>
<b>LIST OF FIGURES</b> .....	<b>7</b>
<b>FOREWORD</b> .....	<b>8</b>
<b>ACKNOWLEDGMENTS</b> .....	<b>9</b>
<b>EXECUTIVE SUMMARY</b> .....	<b>10</b>
<b>1. INTRODUCTION</b> .....	<b>13</b>
<b>1.1 OBJECTIVES AND RATIONALE</b> .....	<b>14</b>
<b>1.2 METHODOLOGY</b> .....	<b>15</b>
<b>1.3. LIMITATIONS</b> .....	<b>15</b>
<b>2. LOSS AND DAMAGE: GLOBAL PROSPECT</b> .....	<b>16</b>
2.1. EVOLUTION OF LOSS AND DAMAGE.....	16
2.2. DIFFERING PERSPECTIVES ON LOSS AND DAMAGE.....	17
2.3. RELEVANT TERMINOLOGIES .....	19
2.4. GLOBAL FRAMING OF LOSS AND DAMAGE .....	22
<b>3. OPERATIONALIZING LOSS AND DAMAGE</b> .....	<b>26</b>
2.1. OPERATIONALIZING LOSS AND DAMAGE .....	26
2.2. DEFINITION OF LOSS AND DAMAGE IN NATIONAL CONTEXT .....	26
2.3. NATIONAL FRAMEWORK FOR LOSS AND DAMAGE .....	27
<b>4. ASSESSMENT METHODOLOGY</b> .....	<b>30</b>
3.1. APPROACHES AND METHODS .....	30
3.2. METHODOLOGICAL STEPS FOR ASSESSMENT .....	31
<b>5. RESPONDING TO LOSS AND DAMAGE</b> .....	<b>61</b>
4.1. APPROACHES TO MINIMIZE LOSS AND DAMAGE FROM CLIMATE CHANGE .....	61
4.3. EXISTING INFORMATION SYSTEM IN LOSS AND DAMAGE IN NEPAL .....	66
7.2. CHALLENGES OF THE DATABASE SYSTEM IN CONTEXT TO L&D.....	67
<b>6. CONCLUSION AND RECOMMENDATIONS</b> .....	<b>69</b>
6.1. CONCLUSION .....	69
6.2. RECOMMENDATIONS.....	70
<b>REFERENCES</b> .....	<b>73</b>
<b>ANNEX: LOSS AND DAMAGE: A CASE STUDY OF FLOODING OF MELAMCHI</b> .....	<b>82</b>

## ACRONYMS

AoSIS	Alliance of Small Island Developing States
AR	Assessment report
BEK	British Embassy Kathmandu
CCIAV	Climate change risks assessment
CCMD	Climate Change Management Division
COP	Conference of Parties
CRM	Climate Risk Management Framework
DDT	Dichlorodiphenyltrichloroethane
DOFE	Department of Foreign Employment
DHM	Department of Hydrology and Metrology
DRR	Disaster risk reduction
ELD	Economic loss and damage
EWS	Early warning system
FAR	Fraction of attributable risk
GDP	Gross Domestic Product
GDI	Gender Development Index
GHG	Greenhouse gases
GLOF	Glacial Lake Outburst Flood
GNI	Gross National Income
GoN	Government of Nepal
HKH	Hindu Kush Himalayas
HDI	Human Development Index
IRM	Incident reporting mechanisms
IPCC	Intergovernmental Panel on Climate Change
JTA	Junior technical assistant
L&D	Loss and damage
LDCs	Least Developed Countries
LOESS	Locally estimated point cloud smoothing
MoFE	Ministry of Forests and Environment
MoHA	Ministry of Home Affairs
MoFAGA	Ministry of Federal Affairs and General Administration
MCDA	multi-criteria decision analysis
NoAA	National Oceanic and Atmospheric Administration (NoAA)
NAP	National Adaptation Plan
NDCs	Nationally determined contributions
NDRRMA	National Disaster Risk Reduction and Management Authority

NELD	Non-economic loss and damage
NEOC	National Emergency Operating Centre
NIDIM	Nepal Integrated Drought Information Mechanism (NIDIM)
NPC	National Planning Commission
NPR	Nepalese rupees
NTFP	Non-timber forest products
OPM	Oxford Policy Management
PDGLs	Potentially Dangerous Glacial Lakes
PIF	Policy and Institutions Facility
SIDS	Small Island Developing States
SRCCCL	Special Reports on Climate Change and Land
SROCC	Special Report on Ocean and Cryosphere in a Changing Climate
TAR	Tibet Autonomous Region of China
UNDRR	United Nations Disaster Risk Reduction
UNFCCC	United Nations Framework Convention on Climate Change
UNWFP	United Nations World Food Programme
VRA	Vulnerability and risk assessment
WIM	Warsaw International Mechanism for Loss and Damage

## LIST OF TABLES

Table 1: The history of L&D under the UNFCCC process	17
Table 2: Typologies of perspectives on L&D	18
Table 3: Difference between economic and non-economic L&D	20
Table 4: Examples of Indicators for Climate Variables and Climate Extreme Indices	32
Table 5: Examples Indicators and their relative weights for the past scenario of climate-related hazards	32
Table 6: Indicators for future scenarios of climate-related hazards	33
Table 7: Examples of Indicator of exposure, sensitivity, and adaptive capacity	34
Table 8: Scope of the economic and non-economic loss and damage	35
Table 9: Mann-Kendall test statistics for linear trend of 14 climatic hazard events	38
Table 10: Descriptive scenarios of climatic hazards under future climate change	38
Table 11: Mann-Kendall test statistics for linear trend of climate-induced disaster deaths and economic losses	43
Table 12: Accounting of economic Loss and Damage due to climate-induced disasters in Nepal	45
Table 13: NELD framework of assessment	47
Table 14. Assessing NELD of 2014 floods in the Karnali river	48
Table 15: Rainfall data of Humde and Jomsom weather station recorded in 2021	49
Table 16: Major GLOF events and the loss and damage	51
Table 17: Monetary value of elements potentially exposed to glacial lake outburst flood risk (USD thousands)	52
Table 18: Displacement and Migration	57
Table 19: Displacement, Migration, and Relocation	58
Table 20: Number of Households displaced due to environmental stressor till	59
Table 21: Responding to loss and damage	62
Table 22: Premium details	63
Annex Table 23 Average monthly precipitation/rainfall in mm of Indrawati river basin for different time intervals	82
Annex Table 24 Five days rainfall recorded in 5 stations of Melamchi river basin from June 12-16, 2021	82
Annex Table 25 Rainfall based on NASA	82

## LIST OF FIGURES

Figure 1: Concept of Climate-induced Loss and Damage	21
Figure 2: Conceptual framework: Linking loss and damage to vulnerability, risk management, and adaptation	23
Figure 3: Distinct typologies of L&D	24
Figure 4: Dynamic framework for assessing and managing climate-related risks	24
Figure 5: Current and future risk from extreme weather events, and the relation to Loss and Damage :	25
Figure 6: Climate change vulnerability and risk assessment framework	28
Figure 7: Framework for assessing climate change-induced L&D	29
Figure 8: Overview of different approaches, methodologies, and tools for loss and damage assessment	30
Figure 9: Likelihood of risk in the natural world, and actual-world	37
Figure 10: District-wise socio-economic exposure	40
Figure 11: District-wise socio-economic vulnerability	40
Figure 12: Impact of climate change on extreme events	42
Figure 13: Key climatological, hydrological, and meteorological incidents in Nepal	42
Figure 14 All Nepal trends of climate-induced disaster deaths	43
Figure 15: Hazard wise deaths, affected people, and economic losses due to climate-induced disasters	44
Figure 16: Human and economic losses due to key hazards	44
Figure 17: Map showing the GLOF hazard ranking in Nepal.	50
Figure 18: Understand Intolerable Risks and Adaptation Limits	54
Figure 19: Comprehensive risk management framework	61



---

## Foreword

Loss and damage (L&D) is gaining an increasing interest in climate change negotiations, research, policy, and implementation of climate change actions connecting the fields of climate change adaptation and disaster risk reduction. However, research on "L&D" remains largely uncharted territory with no official definition of "L&D" in documents. This has implications for both policy and practices in addressing L&D at the country level.

It is necessary to understand the country context of L&D. Definition of L&D will provide clarity on what L&D means in the Nepali context. Besides, the methodological framework used is an important milestone in terms of contextualizing L&D in Nepal's context. Methods of assessing L&D provide a means to ascertain the severity of a disaster for a natural environment or an affected population. For this, L&D assessments should aim to go beyond simple stocktaking of impacts and bring out a more differentiated, comprehensive, and people-centered result. Hence, L&D assessments adequately reflect a post-disaster situation, which recognizes the plight of an affected population and provides a strong basis for policies to avert, minimize and address L&D in the future.

I would like to thank the all the sectoral ministries, the Chief of the Climate Change Management Division (CCMD), Dr Radha Wagle, Raju Sapkota, Dr Arun Bhatta, Srijana Shrestha, Milan Dhungana, and other officials in the Ministry of Forests and Environment (MoFE) who initiated this process, coordinated among different agencies, and contributed to finalizing the document. Also, I am grateful to all the relevant ministries, stakeholders, and experts who provided their valuable input in improving this document.

On behalf of MoFE, I would like to take this opportunity to express our sincere appreciation for the technical and financial support of the British Embassy Kathmandu (BEK), and Policy and Institutions Facility (PIF)/Oxford Policy Management (OPM).

Dr Pem N. Kandel  
Secretary

---

## Acknowledgments

Nepal is one of the highly vulnerable countries to anthropogenic climate change and its impacts are felt in all sectors. L&D from climate change impact is visible in Nepal. Both slow onset events (drought, glacier melting), rapid onset events (flood, fire, landslide) are increasing in frequency, intensity, and magnitude.

In terms of disaster losses and damages, between 1971 and 2019, a significant number of people died in Nepal each year as a result of climate-induced disasters. The average annual economic loss is Nepalese Rupees (NPR) 2,778 million, or about 0.08 per cent of the total gross domestic product (GDP) of the Fiscal Year 2018/19 (at the current price). The most devastating climate-induced disasters in Nepal are floods, landslides, epidemics, and fires. Extreme climatic events, particularly those related to temperature, are likely to become more frequent and severe. Intense precipitation events are expected to become more common, with extremely wet days increasing at a faster rate than very wet days. Climate-induced hazards, when combined with degrading ecosystems, biophysical processes, and other challenges, such as COVID-19, have the potential to cause chronic stress and catastrophic shocks.

This national framework on L&D is of relevance to both understand as well as contextualize L&D in the Nepali context. It provides further understanding of the relevant approaches, methodology, and tools to assess the unavoidable, avoidable, and avoided risks of climate change impacts. Besides, this framework will provide us a unique opportunity to devise country-driven, participatory, and inclusive approaches to tackle climate change risk and vulnerability.

On behalf of CCMD, I would like to acknowledge the contributions of Ajaya Dixit, Dr Bimal Raj Regmi, Dinesh Acharya, Sanchita Neupane, Apar Paudyal, Dr Ram Lamsal, Dinanath Bhandari, Bamshi Acharya, Pratik Ghimire, Regan Sapkota, Rojy Joshi, and Dr Keshab Gautam in drafting the report. Also, I am thankful to Raju Sapkota, Dr Arun Bhatta, Srijana Shrestha, Milan Dhungana, and all the officials of CCMD and MoFE for providing input in the document. Besides, let me take this opportunity to appreciate the suggestions provided by the National Disaster Risk Reduction and Management Authority (NDRRMA), Department of Hydrology and Meteorology (DHM), Ministry of Home Affairs (MoHA), and other relevant stakeholders. I also appreciate the technical and financial support provided by BEK and PIF/OPM.

Dr Radha Wagle  
Joint Secretary  
Climate Change Management Division

## Executive Summary

The rising concentration of greenhouse gases (GHG) in the atmosphere has led to a rise in average global temperature causing local weather systems to be more erratic than in the past and more devastating in terms of impacts. These changes are increasing L&D in developing and Least Developed Countries (LDCs) like Nepal.

In Nepal, climate-induced disasters cause around 65 per cent of all disaster-related annual deaths. The average annual economic loss from climate-induced disasters is about 0.08 per cent of the GDP (2018/19 figures at the current price). In extreme years, like 2017 when Tarai floods occurred, the economic loss and damage from the single disaster event was around 2.08 per cent of the GDP (2017/18 figures at the current price). Multiple studies have predicted an increase in L&D caused by climate-induced disasters in the future.

L&D is still a debated agenda in the United Nations Framework on Climate Change Convention (UNFCCC) process. While the LDCs claim that the agenda of L&D should be a separate item, the third pillar of climate negotiations (adaptation and mitigation being the other two), the developed countries often argue L&D is part of adaptation. While the claims of the LDCs is driven by ground realities and the increasing risk of L&D, the argument by the developed countries is fueled by concern for new resource commitments and a legal requirement for compensation. And the developed countries have been reluctant to accept L&D as a part of the global negotiations.

L&D has acquired importance with the establishment of the Warsaw International Mechanism for L&D in 2013. For the LDCs and developing countries to effectively take advantage of this process and transit to addressing climate risks comprehensively, they need to be able to first assess climate risks as they relate to L&D. This report is an effort towards that objective.

**Definition of L&D in the national context:** L&D for Nepal is defined based on a global discourse emphasizing Nepal's ecological and social diversity. The proposed definition of L&D in Nepal is as follows:

*“represents the actual and/or potential negative manifestations of climate change on sudden-onset extreme events, such as heatwave and extreme rainfall and slow-onset events such as snow loss, droughts, glacial retreat to which people in Nepal's mountains, hills, and Tarai are not able to cope with or adapt to as the country's natural ecosystem, infrastructure and institutions are overwhelmed, leading to the losses of life, livelihoods, including losses of cultural heritage.”*

L&D is conceived as economic and non-economic. Economic type include resources, goods, and services lost that have economic value and can be quantified in monetary terms. Non-economic type involve goods and material services that cannot be bought or sold on the market and can be understood as losses of, inter alia, life, health, displacement and human mobility, territory, cultural heritage, indigenous/local knowledge, biodiversity, and ecosystem services.

**Framing and operationalizing L&D:** Developing a conceptual framework for L&D to serve as a tool will be critical to advancing L&D action in the developing countries and LDCs. This is because increasing vulnerability and higher levels of risks due to climate change will take society beyond thresholds that can limit adaptation. Such a framework will need to play two key roles: i) help operationalize a method for assessing L&D within a country context and ii) engage with the UNFCCC process. The parties to the UNFCCC acknowledge that L&D should include, and, in some cases, involve, impacts that can be reduced by adaptation and those

that can't be. It is also argued that the focus of L&D should be on those climate-related risks where physical and socio-economic limits to adaptation are breached. And to be able to do that many challenges and questions need to be addressed if L&D is to be operationalized.

**Methodological framework for assessing L&D:** Climate-induced L&D manifests itself as a cascading effect across interconnected natural and human systems and infrastructure, resulting in the cessation of services. In addition, the events also directly hit those who face death, injuries, and diseases, and trauma in rapid-onset events and displacement in slow-onset events. The core components of the proposed framework include slow-onset and rapid weather extremes; exposure and vulnerability; risks of climate change impact; the assessment of L&D from the perspectives of unavoidable impacts, avoided impacts, and not avoided impacts. The framework looks into adaptation limits and the constraints of adaptation. To develop a mechanism for assessing L&D, there are key steps to follow. It starts from identifying indicators for assessment, collection of data, analysis of data, and interpretation. This leads to offer a pathway to assess climate-induced L&D which includes i) Assessment of climate-induced events: Trend and scenario assessment, ii) Assessment of exposure, vulnerability, and risks, iii) Assessment of the success, and limits of adaptation and disaster risk reduction, iv) Assessment of direct losses, and v) Assessment of economic and non-economic L&D.

**Climate-induced migration and displacement:** Migration and displacement due to climate-induced disasters are increasing every year. Climate-induced migration and displacement were first mentioned in the UNFCCC documents in 2008. It broadly refers to the movement of people driven by sudden or progressive changes in weather or climate. Such movement can include temporary and permanent, seasonal and singular as well as voluntary and forced movement of people.

**Avoiding impacts and risks of L&D:** The risk can be minimized through technological interventions, practices, indigenous and improved knowledge systems, improved communications, policy and legal measures and institutional innovations among others. Dealing with risk is also shifting the burden of impact to another party through insurance. A farmer, for example, may contact a local microfinance institution, self-help group, or insurance company to cover some of his/her risk of crop failure. Presently, agricultural insurance covers almost all major crops and livestock products with subsidies and compensation in case of complete or partial loss or damage. Agricultural insurance cover products under categories like goats, fish, poultry, and other livestock. Crop insurance includes rice, ginger, orange, turmeric, mushrooms, other crops, and medicinal plants.

**Nepal and global climate negotiation:** In UNFCCC negotiations, Nepal's position is aligned with the approach to adaptation and risk management in avoiding existential threats. Nepal's quest for support to deal with the challenge by attributing all L&D to human-induced climate change will remain hard and it will be appropriate to pursue a comprehensive approach to the assessment including climate risk management considering all abnormal weather events that lead to disasters. To that end, policymakers and practitioners in Nepal are working towards systematically developing an approach that allows them to assess L&D caused by anthropogenic climate change, estimate the cost, and design and implement policies to minimize them.

**Recommendations:** The following recommendations are made for operationalizing L&D in Nepal:

*Ministry of Forests and Environment (MoFE):* The institutionalization of assessment of L&D requires the development of a multi-stakeholder initiative of action research and pilots. The piloting should also lead to answering the questions related to institutional architecture that will assess climate change-induced L&D in Nepal.

*Department of Hydrology and Meteorology (DHM):* DHM must prioritize increasing research on climate science. It must consolidate weather information such as temperature, rainfall, and wind to feed into the above assessment. It must also focus on modeling climate, and, in partnership with other agencies, examine climate impacts on various sectors. Data from DHM's satellite, high altitude measurements, and daily and automatic stations must be used to further refine and that can be used in (Vulnerability Risk Assessment (VRA) report, Climate Change Trend and Scenario report) periodically, as well as align them with regional and global scenarios.

DHM's proposed rainfall thresholds for landslides and floods are a useful starting point but must be linked with other triggers and ambient land conditions for developing a combined general threshold for landslides and floods used for making a realistic assessment.

In the past, investment has been made in flood warning systems that helped minimize the loss of human lives. It will be helpful to assess the benefits such systems have provided in avoiding L&D. This assessment must estimate increased investments in capacity development for preparedness.

*National Disaster Risk Reduction and Management Authority (NDRRMA):* NDRRMA must effectively play its role of coordinating with ministries, departments, and other stakeholders on activities related to multi-hazard assessment, risk communication, and disaster risk reduction.

*Rural and Urban Municipalities (Palikas):* All Palikas must prepare a baseline profile with details on infrastructure and natural ecosystems to serve as a reference for calculating economic L&D, and gradually include the non-economic costs necessary for assessing total L&D.

*Provincial government:* Provincial government can specifically play the role of consolidating data and creating database on L&D, coordinating with the Palikas.

*Other agencies:* Other government agencies, including the civil society, development agencies, I/NGOs, and the private sector can support MoFE/DHM/NDRRMA in creating a database and information collection mechanisms. Besides, these agencies can help the government to develop country positions supported with strong evidence, and access and mobilize climate financing for addressing L&D.

---

# 1. INTRODUCTION

The 2015 Paris Agreement called upon all nations together to adopt ambitious efforts to mitigate climate change-causing greenhouse gases (GHG). The agreement also calls for enhancing support for developing countries so that they can adapt to the impacts of climate change. Countries agreed to do so putting forward their best efforts through 'Nationally Determined Contributions (NDCs) and vowing to strengthen them in the future in five-year cycles. Countries with an NDC timeframe ending in 2025 are required to communicate a new set of commitments by 2020 (UNFCCC 2019). Similarly, countries with NDCs ending in 2030 are asked to communicate or update their NDCs by 2025. The Government of Nepal (GoN) has already submitted its second NDC in 2020.

GoN envisions achieving socio-economic prosperity building a climate-resilient society. To this end, the country submitted Nepal's second NDC in 2020 to meet the stipulation of the Paris Agreement. The major objective of the second NDC is to raise Nepal's national ambition for mitigation and adaptation, set clear, time-bound targets for each, consider associated costs, and draft investment plans as well as an implementation roadmap. According to the GoN's preliminary outline, the second NDC will run to 2030 (10-year targets). Where activities can be made more concrete and achievable, both 2025 and 2030 targets are included. Besides, following Article 4, paragraph 19 of the Paris Agreement, Nepal is formulating a long-term low GHG emissions development strategy by 2021. The strategy will present a vision towards net-zero GHG emissions and a resilient economy.

An important area of interest to GoN as part of the NDC revision is assessing climate-induced loss and damage (L&D). Nepal's Climate Change Policy 2019 also emphasizes the need to conduct research on L&D associated with climate change impacts and implement measures to reduce climate change-related vulnerabilities. Another step in this process is the preparation of a National Adaptation Plan (NAP) that aims to reduce the country's vulnerability to climate change and facilitate the integration of climate change adaptation in policies, programs, and activities across all sectors and levels. The NAP process considers the country's particular climatic and geographic characteristics as well as opportunities and challenges associated with climate adaptation and development.

L&D assessment is important for Nepal's NDC on multiple levels. First, methods of assessing L&D provide the means to ascertain the severity of a climate change spawned disaster in a natural environment and on affected people. L&D assessments should be people-centered and include comprehensive and differentiated information, not a simple stocktaking of impacts. An L&D assessment can only adequately reflect a post-disaster situation if it recognizes the plight of the affected population and provides a strong basis for policies to avert, minimize and address L&D in the future. In doing so, it can also provide significant input for efforts to adapt to climate change. Second, L&D research needs to ascertain the degree to which climate-related events can be attributed to anthropogenic climate change. This knowledge plays a major role in policymaking, as it can be argued that climate events that can be identified as having anthropogenic causes may require appropriate remedies. Third, L&D research is relevant for compensation, relief, and reconstruction following a disaster, including climate-induced. As the methods employed by L&D research aim to evaluate the 'true' effects that a climate-induced disaster has had on an affected population, they can be a valuable tool to measure the amount of compensation an affected household may claim from a climate insurance plan or the amount and type of relief required during the post-disaster period and facilitate recovery.

## 1.1 OBJECTIVES AND RATIONALE

L&D is a local manifestation of a global phenomenon which in turn has its geneses in the historical emission of GHG by the developed countries. The rising concentration of GHG in the atmosphere which leads to a rise in average global temperature has also caused local weather systems to be more erratic than in the past and, in the longer-term, climate is changing. This change has consequences on temperature and precipitation: occurrence, for example, of extreme rainfall and frequent droughts. The changes have consequences on hazards like landslides, floods, snowmelt, glacier retreat, and forest fires. The impacts cascade through the local and regional hydrological cycle with consequences on the dependent social and economic contexts. The assessment of L&D thus has to aim to balance local context with the global processes related to climate change, particularly under the aegis of the United Nations Framework Convention on Climate Change (UNFCCC).

It is important to assess how these local realities juxtapose with the global discourse on L&D and its assessment. Answering the question can help identify existing systemic barriers in countries like Nepal to develop a practical approach to deal with climate change-related L&D. By presenting local complexity in assessing L&D due to climate change, a case can be made for considering L&D as a part of a comprehensive disaster risk reduction effort.

This study has attempted in assessing potential L&D due to climate change in Nepal. The method could help in the costing of adaptation and risk reduction efforts at national, provincial, and local levels. It will be useful for mapping the financial investments required to implement disaster risk reduction and climate adaptation actions. It also aims to strengthen policies aimed at reducing climate-induced L&D in the country and support Nepal's second NDC and NAP. It intended to support policymakers in appreciating the challenges involved in the assessment process, the need for taking measures to develop a system that will help deal with the residual impacts of climate-related stressors that cannot be or have not been avoided. Its specific objectives are:

- Develop a commonly agreed-upon standard methodological framework for L&D assessment, building on successful and replicable national and international concepts and practices as well as limitations.
- Use nation-wide available L&D data on both economic and non-economic losses from climate-related events to suggest an assessment process by analyzing the current trend and future scenarios of L&D.
- Propose an approach to use the proposed process for engaging both domestic and global climate negotiations and dialogue.

It is important to look into climate change challenges on top of the already existing development challenges in Nepal. For example, exploring the linkage between climate change and road development, climate change, and urbanization, and climate change and overall development is key. We need to understand that Nepal already faces major challenges in balancing development needs with environmental conservation (ADB, 2020) and that climate change will make it more serious.

This assessment aimed to provide an answer to the additional scale of the support required to address severity and vulnerability. By doing so, we can find an answer to what Nepal needs to do to build resilience and minimize climate change-induced L&D. We look at the challenge of attribution— historical versus current impacts to generate evidence to demonstrate that this approach can be publicly acceptable with the backing of additionality data. Establishing a standardized data system is a prerequisite for assessing L&D and using it as a basis to securing additional climate finance support.

## 1.2 METHODOLOGY

The study used a review of literature and consultation with relevant stakeholders as major methods for collecting information and data. Specifically, it used the following methodological processes.

- Reviewed national and international legal and policy documents related to L&D and the policy directions in understanding L&D
- Reviewed the existing literature with regards to the commonly practiced methodology for assessing climate-induced loss and damage
- Discussed with relevant stakeholders and captured their views and suggestions on the concept and methodology.
- Due to the COVID-19 lockdown, virtual consultations were held with officials of the GoN and other stakeholders. Some of the local level consultations could not be held and were managed through virtual means. The methodology also involved regular consultations with the MoFE- CCMD, and PIF team whose support has been key.
- Developed drafts of a scoping paper for defining climate-induced L&D in the context of Nepal and a methodological framework for assessing climate-induced L&D (loss and assessment indicators; methodology and set of procedures for climate-induced L&D data collection, assessment, and analysis). The methodology was designed to provide a clear definition of what type of information needs to be collected and how it should be analyzed.
- Proposed a mechanism for assessing L&D, reviewed, and suggested indicators that will form the basis for the assessment.
- Organized a national workshop to share the draft and receive feedback.

## 1.3. Limitations

This study focused more on defining L&D in the country context and providing a framework for the assessment. Although a few examples were cited in this document, it was difficult to assess climate-induced L&D for three reasons. First, the ability to attribute impacts to specific weather events has not been established except for glacier melting and its impact. Second, there is no globally accepted approach to assessing climate change-induced L&D. Third, lack of systematic data on economic and non-economic loss and damage. All three reasons create wrangling in global negotiations, where legal and political imperatives are likely to make L&D a means to support developing countries face a major hurdle.

One of the important aspects of the future L&D assessment is to establish a robust database system that captures both economic and non-economic L&D and covers every aspect of it. It is also important to come up with scenarios for climate-induced hazards in terms of quantifying how it will change in the future and the likelihood of their impacts in terms of L&D.



## 2. LOSS AND DAMAGE: GLOBAL PROSPECT

### 2.1. Evolution of Loss and Damage

As the pace of anthropogenic climate change continues to rise, the impacts are starting to manifest themselves through higher intensity and more frequent rapid onset extreme weather events, and greater impacts from slower onset weather events. These impacts are already being felt and hitting marginalized and vulnerable people the most. The fact that the climate is becoming more extreme and causing more L&D in the present points to the fact that climate justice needs to be a central component of humanity's response to climate change and that addressing L&D is a critical element of addressing climate justice.

Interest in L&D is increasing in global climate change negotiations, research, and policy, and the implementation of climate change actions. It is also being discussed in the context of formulating NAP and revising the NDC report as mentioned above. However, research on L&D remains largely uncharted territory, though it is framed as the actual and/or potential manifestation of impacts associated with climate change in developing countries that negatively affect human and natural systems. This fact has implications for both the policy and practice of addressing L&D at the country level.

L&D is not a recent phenomenon in global climate negotiations. During the establishment of the UNFCCC in the early 1990s, the Alliance of Small Island Developing States (AoSIS) submitted a proposal that included the concepts of insurance for losses from sea-level rise and compensation for climate impacts. Over the years, however, L&D has been a politically sensitive topic where consensus-building has been difficult in the global dialogue on climate change.

Discussions about L&D have been polarized between developed and developing countries, especially around notions of compensation and liability for L&D from climate change. Fueled by the concern of new resource commitments and a legal requirement for compensation, developed countries have been reluctant to accept this agenda as part of the global negotiations. Developed countries have often argued that L&D is a part of adaptation, while AoSIS and Least Developed Countries (LDCs) have claimed that the agenda of L&D should be a separate item, the third pillar of climate negotiations (adaptation and mitigation being the other two).

While the concept of L&D has been used implicitly since the beginning of climate change negotiations, it has acquired particular importance with the establishment of the Warsaw International Mechanism (WIM) for Loss and Damage in 2013 (see Table 1 on the history of L&D in the UNFCCC process) (UNFCCC, 2019; Doktycz and Abkowitz, 2019). This was primarily due to calls from Small Island Developing States (SIDS) and LDCs, which stressed that while they were the most impacted by climate change their responsibility was limited. In this context, L&D has been implicitly defined as “the actual and/or potential manifestation of impacts associated with climate change in developing countries that negatively affect human and natural systems”. This includes, in particular, the impacts of extreme events (e.g. heatwaves and floods) and slow-dynamic changes (e.g. sea-level rise, glacier, and ice retreat).

As discussions around climate crises and climate emergency gain credence, L&D, due to the adverse impacts of climate change, have become increasingly relevant for international climate policy and advocacy. For LDCs and developing countries to effectively take advantage of this process and transit to addressing climate risks comprehensively, they need to be able to first assess climate risks as they relate to L&D.

Several reports highlight the increasing risk of climate-induced L&D. These are: i) the Intergovernmental Panel on Climate Change's (IPCC) Special Report on 1.5°C (IPCC 2018), ii) the 2019 Special Reports on Climate Change and Land (SRCCL), iii) the Ocean and Cryosphere in a Changing Climate (SROCC) (IPCC 2019 a,b), and iv) the 2018 Hindu Kush Himalaya Assessment Report that summarizes evidence on the risks and impacts from climate change in the Hindu Kush Himalaya (HKH) regions (Wester et al., 2019). All reports point to a potential existential and irreversible trend and provided further traction to this policy agenda of L&D.

**Table 1: The history of L&D under the UNFCCC process**

<b>1991</b>	Vanuatu, on behalf of AoSIS tabled a proposal for an insurance facility for SIDS to compensate for sea-level rise.
<b>2007</b>	Parties to the convention during COP13 agreed in the Bali Action Plan to explore 'means to address loss and damage associated with climate change impacts in developing countries particularly vulnerable to the adverse effects of climate change'.
<b>2008</b>	During COP 14 in Poznan, AoSIS submitted a proposal for a multi-window mechanism for an international L&D mechanism.
<b>2010</b>	During COP 16 in Cancun, parties agreed to establish a 'work program to consider approaches to address loss and damage associated with climate change impacts in developing countries that are particularly vulnerable to the adverse effects of climate change'. This program was housed within the 'Cancun Adaptation Framework'.
<b>2011</b>	Relevant knowledge on L&D is shared and synthesized in COP 17.
<b>2012</b>	The role of the COP in addressing L&D is agreed upon in COP 18.
<b>2013</b>	During COP 19 in Warsaw, parties agreed to establish WIM for L&D and its executive committee. WIM was meant to be the main mechanism under the UNFCCC for addressing L&D in a 'comprehensive, integrated and coherent manner'.
<b>2014</b>	The work plan and the organization of the executive committee are approved in COP 20.
<b>2015</b>	In Paris, WIM was anchored in the Paris Agreement through Article 8. Parties agreed to 'averting, minimizing and addressing loss and damage associated with the adverse effects of climate change, including extreme weather events and slow onset events, and the role of sustainable development in reducing the risk of loss and damage'. Gave mandates for establishing a clearing house for risk transfer and to establish a task force on displacement.
<b>2016</b>	The first review of WIM was conducted during COP 22.
<b>2017</b>	The Fiji Clearing House for Risk Transfer and the Task Force on Displacement was launched during COP 23.
<b>2018</b>	Task Force recommends integrated approaches to avert, minimize and address displacement in COP 24.
<b>2019</b>	The second review of WIM was conducted during COP 25 in Madrid, Spain, where parties sought to strengthen WIM helping to improve collaboration and coordination inside and outside the convention and to scale up resources, action, and support to developing countries. The Santiago Network to catalyze support to developing countries for L&D was also established.

Source: [www.unfccc.int](http://www.unfccc.int)

## 2.2. Differing Perspectives on Loss and Damage

Scholars on L&D have also grown in the last decade, with a focus on understanding the

economic losses of climate change, looking beyond adaptation, and further explaining what L&D could mean (McNamara and Jackson, 2018). The IPCC has included a three-page text box on ‘Residual Risks, Limits to Adaptation and Loss and Damage’ in its SR 1.5°C report (Mechler, Singh and Ebi, 2020), the first time the IPCC reviewed scientific literature on L&D (Shinko et al., 2019).

Developing countries in the UNFCCC negotiations consider L&D as distinct from adaptation, treat climate change negotiations as an appropriate forum to discuss L&D, hold developed countries liable for L&D; and call for compensation (Huq et al., 2013). Developed countries, on the other hand, as mentioned earlier, do not recognize L&D as distinct from adaptation and avoid references to compensation and liability.

A political settlement was reached at the COP 21 in Paris in 2015 and L&D was institutionalized within the UNFCCC architecture. However, its formulation is still ambiguous and vague. It is not clear what L&D means for it to be applicable in practice. A UNFCCC literature review defined L&D as “the actual and/or potential manifestation of impacts associated with climate change in developing countries that negatively affect human and natural systems” (UNFCCC, 2014). The WIM text is ambiguous as it is all-encompassing but it does include language on specific L&D measures, comprehensive risk management, non-economic losses, and particularly mentions vulnerability.

In the Paris Agreement, L&D is more ‘tightly constrained’. For the first time, L&D is separated from adaptation in its article (Article 8), which conflicts with some core aspects of adaptation. Conversely, the Paris decision text explicitly states (in paragraph 51) that Article 8 does not involve liability and compensation...though permanent and irreversible losses are mentioned...’ (Boyd et al., 2017). Some have suggested that the relative ambiguity has helped different actors ascribe their understanding to the concept (Calliari, 2016). Table 2 lists the distinct typologies of perspective on L&D based on expert interviews of UNFCCC supported actors (Boyd et al., 2017).

**Table 2: Typologies of perspectives on L&D**

<b>Perspective</b>	<b>Implications for practice</b>	<b>Implications for research: How to improve our understanding of L&amp;D?</b>	<b>Implications for finance: How to finance L&amp;D?</b>
Adaptation and Mitigation	Mitigation and adaptation.	All climate change impacts are potential L&D; therefore, we must continue research efforts to understand climate change impacts (e.g. climate change risk assessments for adaptation, climate services).	L&D does not require additional funding beyond existing climate finance.
Risk Management	Comprehensive risk management. Suggestions from interviewees include insurance, insurance pools, catastrophe bonds, life insurance, disaster risk reduction (DRR), sovereign disaster risk rating, climate services and early warning,	Integration of disaster risk assessment with climate change risk assessment. Analysis of risk management tools to identify gaps.	Emphasis on insurance schemes and private sector finance.

	engineering, and capacity-building.		
Limits to Adaptation	Focus on options or contingency plans for vulnerable people. Interviewees emphasized risk transfer, social safety nets, micro-insurance, innovations in livelihoods (early warning), and participation.	Analysis of what is beyond adaptation. Research is done with vulnerable people to identify limits, monitoring, and evaluation for adaptation, climate change risk assessment with estimates of adaptation pathways, and limits.	Emphasis is not generally on finance.
Existential	Focus on mitigation to avoid L&D and ex-post measures to address loss, including compensation, migration facilities, homeland resettlement, acknowledgment, official apologies, memorials, historical preservation, and international litigation.	Analysis of the probability of and vulnerability to, permanent, irreversible, long-term, unavoidable changes. Assessment of L&D, which has already occurred. The research was done with vulnerable people to understand and anticipate loss, particularly non-economic loss (e.g. post-traumatic stresses induced by events, loss of identity, or sense of place).	Associated with calls for compensation, but the emphasis that this is not the only or even the most important aspect of addressing L&D.

### 2.3. Relevant Terminologies

Terms such as risks, hazards, exposure, capacity, vulnerability, adaptation, and mitigation are commonly used in all efforts to deal with climate change-induced L&D though they have varying meanings within different epistemic communities. While hazard, exposure, and capacity can be treated straightforwardly, risk and vulnerability present analytical challenges. From a scientific perspective, the risk is considered as a probability of events in a geographical area. Risks are also socially constructed and risk perceptions vary depending upon one's worldview (Rayner and Malone, 1998). The terms adaptation in climate change and mitigation in disaster risks imply a similar connotation. In the reduction of GHGs, mitigation is commonly used.

The key terminologies related to L&D are explained below: (Source: Doktycz, C., & Abkowitz, M., 2019)

**Adaptation constraints:** Factors that make it harder to plan and implement adaptation actions or that restrict options.

**Adaptation limit:** The point at which an actor's objectives (or system needs) cannot be secured from intolerable risks through adaptive actions. *Hard adaptation limit:* No adaptive actions are possible to avoid intolerable risks. *Soft adaptation limit:* Options are currently not available to avoid intolerable risks through adaptive action.

**Adaptation deficits:** The lack of timely action and support

**Extreme events** refer to events such as storm surges, droughts, heatwaves, and floods.

**Loss** is considered as the negative impact that prohibits restoration or reparation. Damage is the negative impact that permits restoration or reparation. Other terminologies used are as follows.

**Tangible cost:** Tangible cost is the quantifiable cost that is associated with distinguishable assets. Damage to infrastructures and property such as cars, livestock, crops, business interruptions, costs for relocation, are some examples of tangible costs.

**Direct tangible cost:** Direct tangible costs are considered those that occur as a direct result of the physical impact of the event on assets and property (e.g., cost per square foot of residential housing).

**Indirect tangible cost:** Business interruption, relief efforts, lost tourism, relocation costs, disruption to transportation, and diminished living conditions are indirect intangible costs.

**Intangible cost:** Intangible costs cannot be quantified or easily estimated because of the subjective nature of the variables involved. Putting a dollar value on environmental degradation can include several considerations and is complex. Physical injuries, social disruption, and challenges in post-disaster recovery are intangible.

**Direct intangible cost:** Direct intangible costs occur as a result of the physical impact of the event on the subjective variables that are difficult to value monetarily. Examples: loss of life, productivity loss, decline in employee morale, loss of brand value, or damage to brand equity.

**Indirect intangible cost:** Indirect intangible costs are triggered by placing subjective value on a circumstance or event in an attempt to quantify the direct impacts. Social disruption, challenges in post-disaster recovery, and cultural impacts are some examples of indirect intangible costs.

**Risk mitigation costs:** Risk mitigation costs signify the expenditure incurred to achieve a reduction in L&D when an extreme event is experienced. Common risk mitigation costs comprise funding for (1) administrative practices, (2) land-use preparation, (3) hazard reforms, (4) infrastructure, (5) prior communication of events, (6) emergency response and evacuation, (7) financial incentives, and (8) risk transfer (e.g., insurance).

**Slow-onset events** refer to the events that take place over longer time frames (typically years to decades). Examples are sea-level rise, salinization, ocean acidification, coastal erosion, desertification, loss of biodiversity, and glacial retreat, etc.

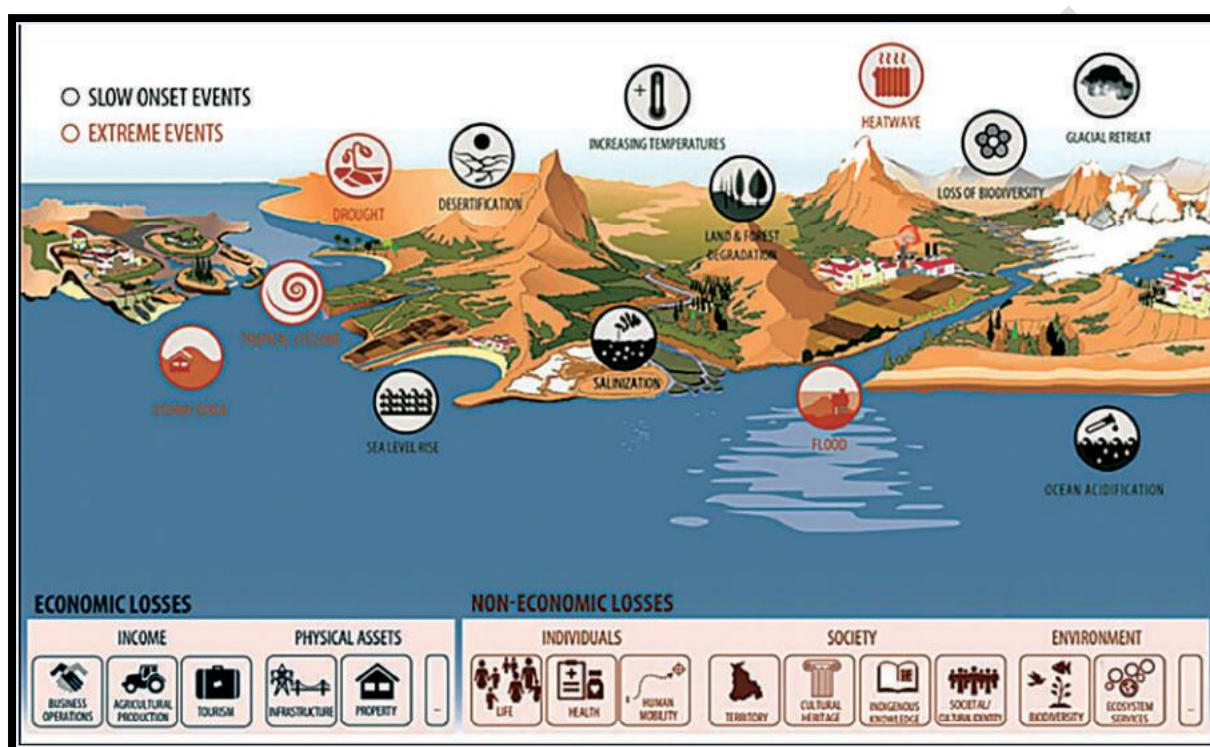
The above definitions are useful but, in a situation, where the basics need to be established, they can make the task of assessing L&D complicated. In this report, L&D can be understood in two forms: Economic Loss and Damage and Non-Economic Loss and Damage. The differences are presented in Table 3 and the text below.

**Table 3: Difference between economic and non-economic L&D**

<b>Non-Economic Loss and damage</b>	<b>Economic loss and damage</b>
Individuals: life, health, human mobility	Income: Business operations; agricultural production (crops yields, livestock fisheries); Tourism

Society: territory, cultural heritage, indigenous knowledge, societal Cultural identity	Physical assets: infrastructure (buildings, bridges, roads, railways, irrigation canals, reservoirs, trails, power generation stations, dams, dykes, etc.), property (house, land, etc.)
Environment: biodiversity, ecosystem services	

Source: UNFCCC, 2013/Frankhauser and Dietz, 2014; Andreni et al., 2015; Morrissey and Oliver-Smith, 2013



**Figure 1: Concept of Climate-induced Loss and Damage**

Source: UNFCCC, 2018<sup>1</sup>

**Economic Loss and Damage (ELD):** Economic losses are defined by the UNFCCC as “losses of resources, goods, and services that are commonly traded in markets.” (UNFCCC, 2013b: 3). It categorizes economic loss and damage into five types: business operations, agriculture production, tourism, infrastructure, and property (See Figure 1). It can be further classified as direct loss and indirect loss. Direct loss is caused due to contact with disasters. Examples of direct loss include buildings, cars, livestock, crops, infrastructure, etc. The indirect loss has no contact and causes as a consequence of the disaster.

**Non-Economic Loss and Damage (NELD):** By contrast, non-economic losses are understood as losses that involve goods and material services that cannot be bought or sold on the market (Morrissey & Oliver-Smith, 2013). According to the UNFCCC, “Non-economic losses occur in three distinct areas: private individuals, society, and the environment. More specifically, non-economic losses can be understood as losses of, inter alia, life, health, displacement and human mobility, territory, cultural heritage, indigenous/local knowledge, biodiversity, and ecosystem services” (UNFCCC, 2013). NELD includes emergency costs,

<sup>1</sup> [https://unfccc.int/sites/default/files/resource/Online\\_guide\\_on\\_loss\\_and\\_damage-May\\_2018.pdf](https://unfccc.int/sites/default/files/resource/Online_guide_on_loss_and_damage-May_2018.pdf)

business interruption, supply-chain disruption, and propagations, lost production during the reconstruction period, macro-economic impacts, political destabilization, and psychological trauma, and disruption of the social network. NELD is dynamic, contains multiple values, and is hard to account for and monetize. Their assessment presents conceptual, ethical, and empirical challenges. Broadly, NELD has not been used in the assessment of diverse impacts of climate change, and in designing compensation mechanisms, and in insurance.

There have been attempts to develop working definitions of L&D. One such definition is that 'L&D is the adverse effects of climate-related stressors that cannot be or have not been avoided through mitigation or managed through adaptation efforts' (Zommers et al., 2016). L&D is defined as adverse effects of climatic stressors resulting from inadequate efforts to reduce greenhouse gas emissions and insufficient capacity to reduce the risks associated with climatic stressors, to cope with impacts of climatic events, and to adapt to climatic changes (Van der Geest and Schindler, 2017). Other analysts define L&D from the disaster risk management perspective, covering responses from individual hazard events to system risks. Such responses could include measures such as watershed conservation, improvement of community access to information on extreme weather events, and capacity to use that information in a local level forewarning.

This perspective, discussed above, on L&D could help in developing a framework that is useful to local governments and sector-specific, sub-national, and national-level actors. Though concerns over uncertainties and data gaps remain, climate change will result in both economic and non-economic L&D. It will be necessary to develop a conceptual framework of L&D that includes these impacts on humans as well as to other natural systems to guide assessment practice.

## 2.4. Global Framing of Loss and Damage

The different frames presented between 2003 and 2013 give an overall picture of how the L&D issue has been discussed over time. Before 2009, the issue tended to be discussed either in terms of an "insurance and risk transfer" frame or a "compensation and liability" frame. This changed dramatically after 2008, when a broader, more ambiguous "loss-and-damage" frame emerged, in part as a result of the Bali Action Plan language negotiated in 2007 (Vanhala and Hestbaek, 2016). Debates around "L&D" from anthropogenic climate change have expanded rapidly since the adoption of WIM for Loss and Damage in 2013.

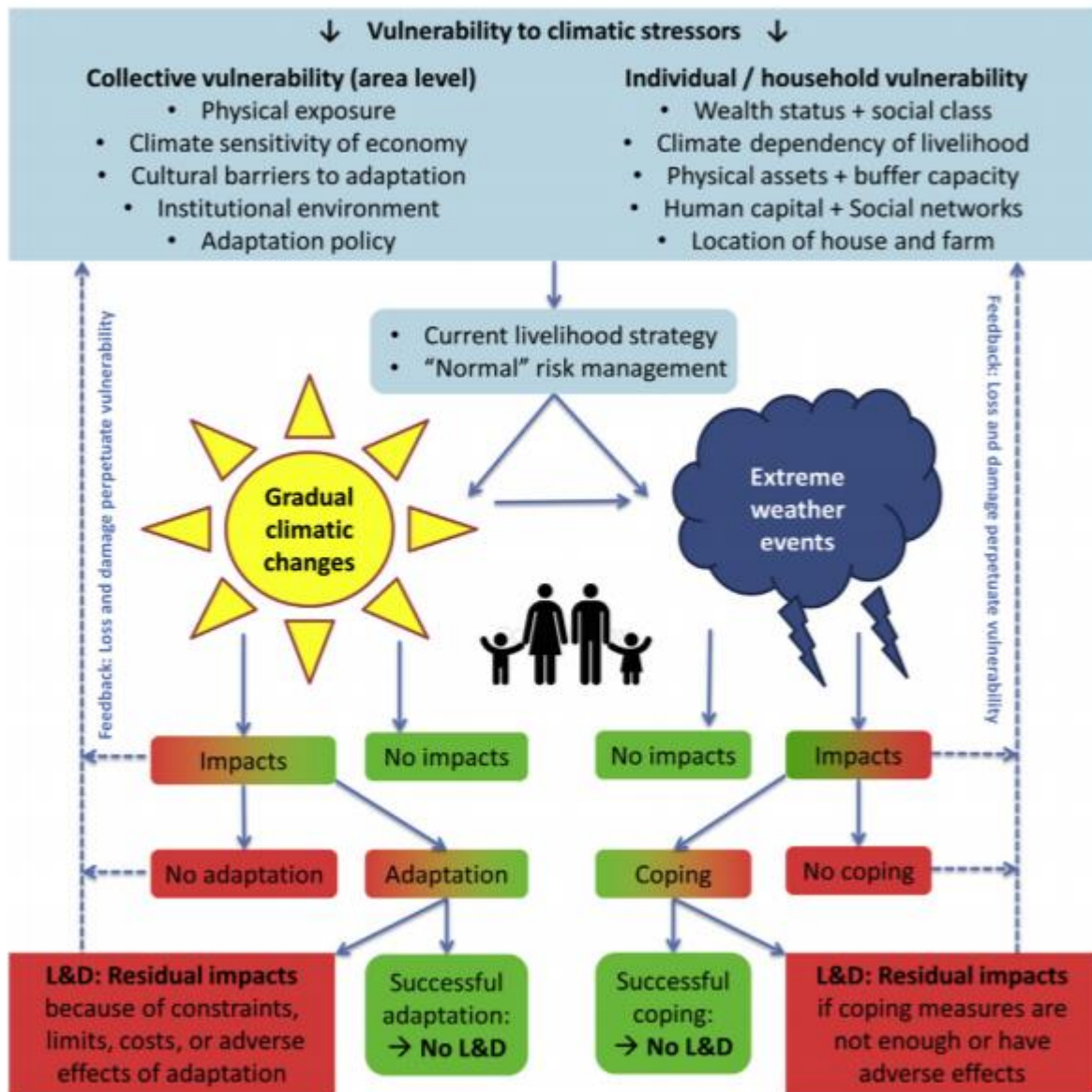
In recent years, there have been important contributions to the L&D debate, especially by (i) framing it through a disaster and climate risk management perspective (Birkmann and Welle, 2015; Mechler and Schinko, 2016); (ii) looking at the connection between L&D and the limits to adaptation (Warner and van der Geest, 2013, 2015); (iii) and outlining how attribution studies could support the assessment of L&D (Huggel et al., 2013).

Despite the urgent need for scientific best practices to inform policies to avoid, minimize and address L&D, the international framing faces internal disagreements and lacks a coherent conceptual framing, which hinders scientific progress and practical implementation (Boda et al., 2020). Developing a conceptual framework for L&D to serve as a heuristic tool will be critical to advancing L&D action in developing countries. Such a framework will need to play two key roles: i) help operationalize a method for assessing L&D within a country and ii) engage with the UNFCCC process. Some work has been done globally to develop such a framework. A few relevant frameworks are explained below:

**Framework one:** This concept refers to the negative effects of climate variability and climate change that people are not able to cope with or adapt to (Warner and Van der Geest, 2013) (Figure 2). The authors argue that data is necessary on i) climate stressors (variability and

change), ii) societal impacts, iii) responses (adaptation), and IV) residual L&D (limits to adaptation). They identify four L&D pathways:

- Adaptation is not enough to avoid L&D.
- Measures have costs that are not regained.
- Measures are erosive and maladaptive creating further vulnerability.
- No measures are adopted (due to limits to or constraints on adaptation).

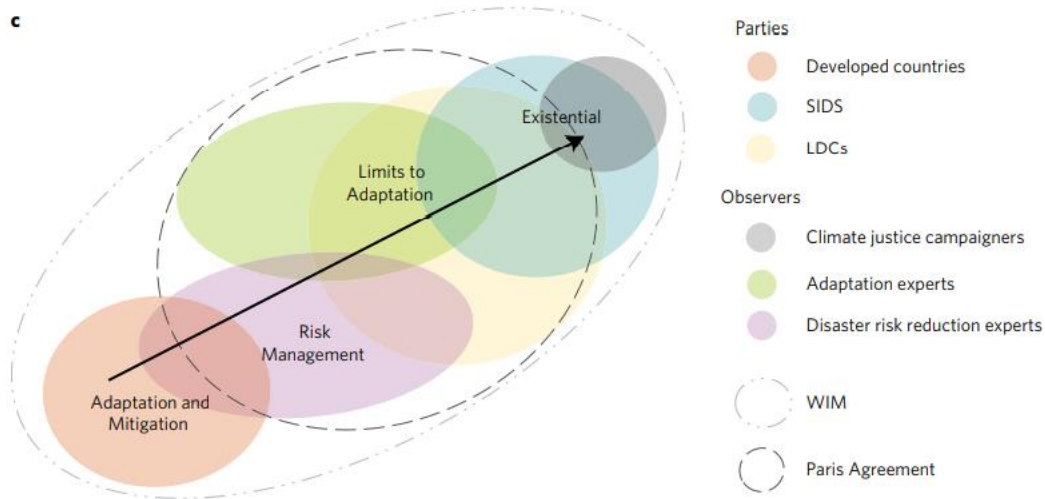


**Figure 2: Conceptual framework: Linking loss and damage to vulnerability, risk management, and adaptation**

Source: Van der Geest and Schindler, 2017

**Framework two:** A second framework (Figure 3) identifies four distinct typologies of perspectives on L&D as listed in Table 1.2 (Boyd et al., 2017). These perspectives create a useful method to understand the different ways that L&D is conceptualized by different actors. However, the framework offers little practical way forward.

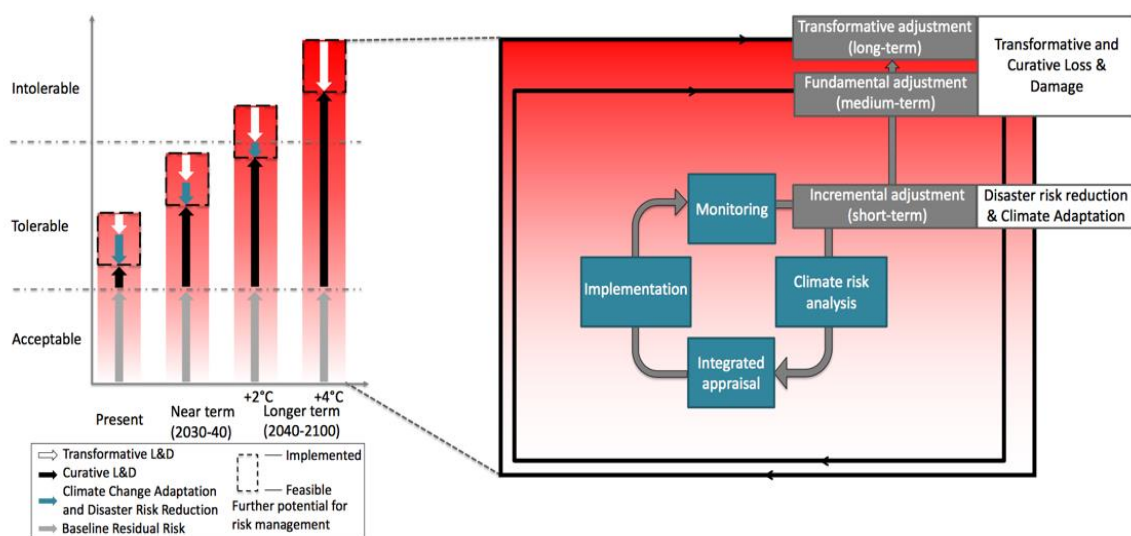




**Figure 3: Distinct typologies of L&D**

Source: Boyd et al. (2017)

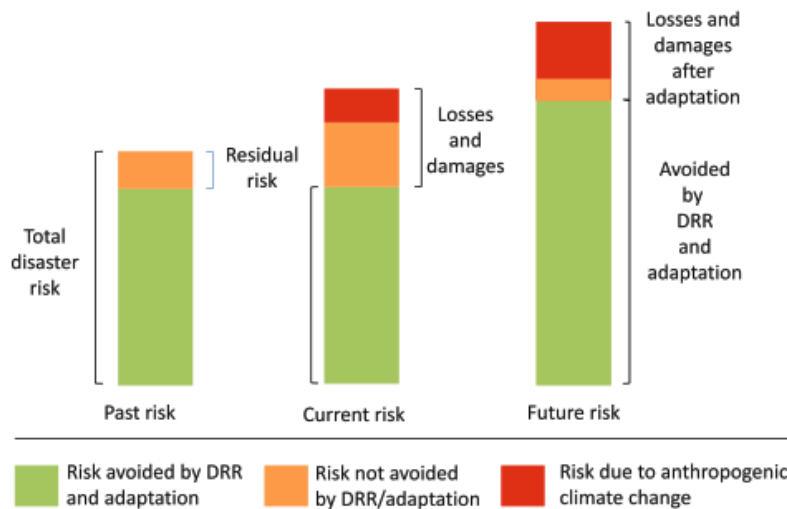
**Framework three:** Several challenges to the operationalization of L&D arise. One is the current limitation in attributing L&D to a specific climate event and the other is a stalemate in global climate negotiations. Though there is scientific consensus that human actions lead to greater emission of GHGs and exacerbate climate-related risks, overcoming these twin limitations is not easy. The Climate Risk Management Framework (CRM) (Figure 4) suggests that by addressing existing climate variability and extreme weather events in the short term, the process of assessing L&D could be initiated (Schinko and Mechler, 2017). The CRM would help mainstream climate change impacts into the process of assessing L&D as new scientific evidence continues to emerge. The CRM Framework can address the root causes of vulnerability and thus help build the resilience of communities, livelihoods, and ecosystems. It can develop and implement policies to minimize L&D despite difficulties in attributing specific weather events to climate change (Roberts and Pelling, 2018). At the same time, the identification of options for practical adaptation actions and limits to adaptation remain key challenges to overcome in dealing with climate change-induced L&D.



**Figure 4: Dynamic framework for assessing and managing climate-related risks**

Source: Mechler, R., Bouwer, L.M., Schinko, Th., Surminski, S., Linnerooth-Bayer, J. (Eds.)

**Framework four:** Figure 5 illustrates how past risk from extreme weather has increased, and how this risk can be reduced or avoided through disaster risk reduction (protection and prevention). There will always remain a residual risk (see also a chapter by Schinko et al., 2018), which cannot be reduced in a cost-efficient way, i.e., the costs of eliminating the risk are considered higher than incurring the costs. However, current risk has increased by increasing exposure, and possibly by anthropogenic climate change. Part or all of this risk is related to the L&D debate, depending on whether or not residual impacts are considered to be included. Future risk will increase further due to anthropogenic climate change, leading to an increasing amount of losses and damages, not addressed by disaster risk reduction and adaptation. However, as vulnerability is likely to be further reduced, the share avoided by disaster risk reduction and adaptation will also increase. The losses and damages after adaptation include unavoidable losses and damages, potentially including the residual risks that will remain.



**Figure 5: Current and future risk from extreme weather events, and the relation to Loss and Damage**

Source: Bouwer, L. M., 2019

## 3. OPERATIONALIZING LOSS AND DAMAGE

### 3.1. Operationalizing Loss and Damage

The parties to the UNFCCC acknowledge that L&D should include, and, in some cases, involve, impacts that can and can't be reduced by adaptation. It is also argued that the focus of L&D should be on those climate-related risks where physical and socio-economic limits to adaptation are breached. When do these happen and at what threshold? The answers are not clear. Adaptation encompasses the capacity to recover from a hazard impact, build back better, and remain in a position to minimize L&D. Yet L&D from hazards are inevitable because both the character of hazards and societal exposure to them are changing. At the same time, increasing vulnerability and higher levels of risks due to climate change will take society beyond thresholds that can limit adaptation. As a result, numerous challenges and questions need answers if L&D is to be operationalized. Some of them include the following:

- 1. Uncertainty about the future climate and its impacts**
  - a. What are the patterns of local changes in weather and climate variability?
- 2. The unequal impact of climate change across time and space**
  - a. How do different climate stressors impact societies?
  - b. Who is most vulnerable to these impacts, and why? Given the primacy of justice framing, why are women and other vulnerable groups often at the receiving end of L&D?
  - c. How does the impact of a climate variable on society lead to L&D among individuals and households in a geographic area?
  - d. How can impacts on ecosystems, health, security, biodiversity, and loss of cultural identity best be measured and addressed?
- 3. Adaptation measures, adaptation limits, and residual losses**
  - a. How can the hard and soft thresholds at which impacts exceed adaptive capacity be identified?
  - b. How is residual L&D related to adaptive capacity? How can it best be linked to disaster mitigation as well as to the suitability of proposed adaptation options?
  - c. What specific adaptation measures address the needs of the most vulnerable section of the population?
- 4. Attribution to climate change**
  - a. How can L&D from specific weather events be attributed to anthropogenic climate change?
  - b. How can L&D from climate change-induced hazards be separated from L&D triggered by other non-climatic hazards?

The above questions are equally important for Nepal in operationalizing the assessment of L&D. There are no clear answers.

### 3.2. Definition of Loss and Damage in National context

As mentioned above, many global-level studies rank Nepal as one of the high-risk countries due to climate change and vulnerability to climate-induced disasters. While lessons of the studies may be fragmented to provide a substantive articulation of cause and effect as well as the role of other factors such as human intervention, governance, and institutional capacity to

respond to the impact and build back better, the increasing influence of uncertain climate is clear (Gautam, 2020).

The social context brings to the fore the limitation of adaptive action to climate change. Crop diversification is an example. Diversification is generally suggested as an adaptation strategy to changing climate but also reflects the challenge of such a singular strategy. It is problematic in Nepal's diverse and differential social context. Nepal has thousands of small landholders and landless households. The landless have no option to crop diversification and small landholders when faced with stress many times borrow food from a wealthier neighbor, money lender, or even sell off their assets such as livestock to deal with the stress (Man, 2019).

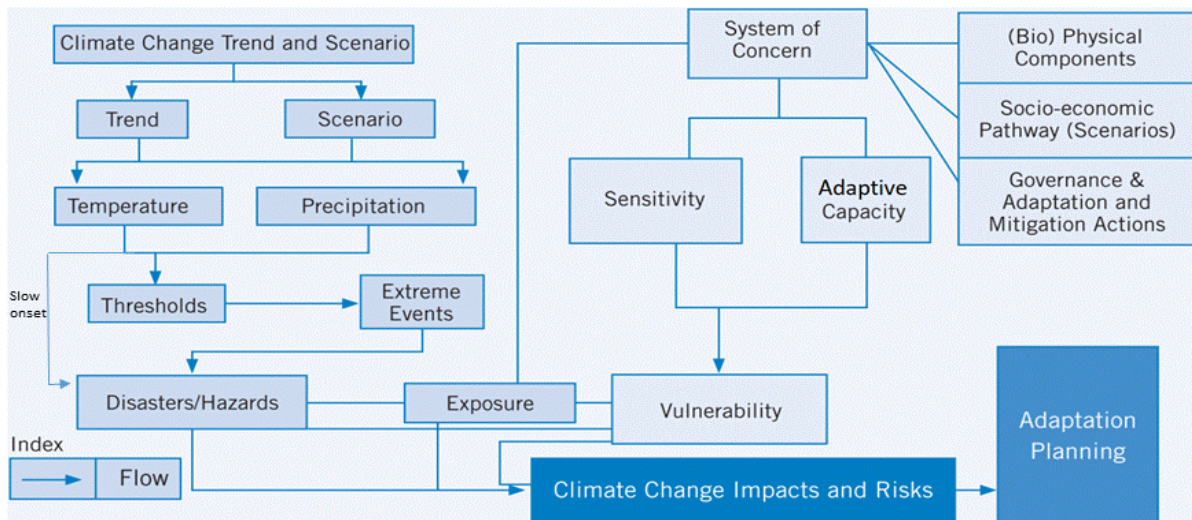
The diversification practice is not adaptation (if adaptation is conceived as doing well when faced with stress) but coping (defined as barely surviving). Such farmers also face unequal power relations and socioeconomic marginalization. Many smallholding farming families face indebtedness that lowers their well-being. To this, climate change impacts add a new layer and push them further into vulnerability. While climate change will affect the majority of Nepali people, the extent of its impact will vary among households living in the country's diverse ecological regions (Mountain, Hills, and the Tarai). It will affect more those in the lower social and economic bracket.

In this backdrop, L&D for Nepal is defined based on global discourse by emphasizing Nepal's ecological and social diversity. The proposed definition of L&D in Nepal is as follows:

***“represents the actual and/or potential negative manifestations of climate change on sudden-onset extreme events, such as heatwave and extreme rainfall and slow-onset events such as snow loss, droughts, glacial retreat to which people in Nepal's mountains, hills, and Tarai are not able to cope with or adapt to as the country's natural ecosystem, infrastructure and institutions are overwhelmed leading to the losses of life, livelihoods, and cultural heritage.”***

### **3.3. National Framework for Loss and Damage**

There are various frameworks and conceptualizations on how to assess risk and vulnerability, including quantitative and qualitative assessment methodologies (see, e.g., Wisner et al., 2004; Birkmann, 2013; International Federation of the Red Cross and Red Crescent Societies 2008; IPCC, 2012). While risk is seen as the product of the interaction between an extreme event or hazard and the vulnerability of a society or community, the term vulnerability is understood as a predisposition to be affected (see, e.g., IPCC, 2012) or as an internal risk factor (Birkmann, 2013). In this regard, the hazard or the physical event linked to climate change is seen as an external factor to the society or system exposed. In the early 1990s, Burton et al. (1993) stressed that disaster L&D is caused by the interrelation between hazardous events and the characteristics of the exposed elements that are susceptible to damage.



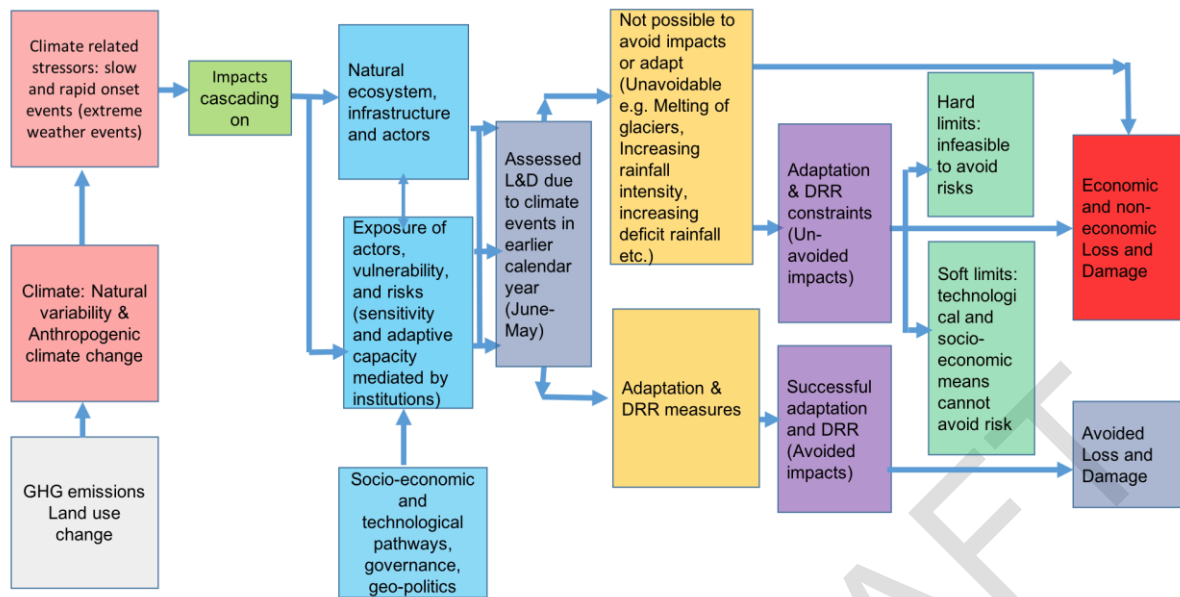
**Figure 6: Climate change vulnerability and risk assessment framework**

Source: MoPE, 2017

The framework presented in the Vulnerability and Risk Assessment Report (MoFE, 2021) of Nepal underscores that (disaster) risk is determined by the interaction between extreme weather events which are influenced by anthropogenic climate change and climate variability on the one hand, and the vulnerability and exposure of societies influenced by socio-economic development processes on the other (Figure 6). The MoFE report also emphasizes that a risk perspective is essential to be able to effectively address the potential negative consequences of extreme events due to climate change (MoPE, 2017).

In the context of Nepal, addressing the risk of climate change-induced L&D requires an improved understanding of the social construction of vulnerability and exposure as well as the potential changes and magnitude of climate-related hazards. The integration of climate change adaptation and DRR is necessary to practically address the challenges. However, IPCC assessment reports that a range of biophysical, institutional, financial, social, and cultural factors constrain the planning and implementation of adaptation options and potentially reduce their effectiveness (Klein et al., 2014).

L&D occurs where adaptation actions are unavoidable, not physically or technically possible, socially difficult, or simply not sufficient to prevent some harm to humans, the environment, and assets (Morrison and Pickering, 2013). The more global temperatures continue to rise, the more likely it is that adaptation limits will be reached. The impacts of climate change that cannot or will not be avoided through mitigation or adaptation efforts are particularly challenging for those poor countries that are already exposed to harsh climate conditions. They include the losses and damages both from changes in the frequency, intensity, and geographical distribution of extreme weather events such as storms and floods and from slow-onset phenomena such as glacier melting, loss of biodiversity, and desertification. Climate adaptation policies and programmes typically involve ex ante actions aimed at building resilience before the occurrence of extreme weather or slow-onset event. Actions to address losses and damages build on these efforts by also establishing mechanisms to help those who have already experienced losses and damages through financial or other forms of support such as social safety nets or social protection programmes (ex post relief).



**Figure 7: Framework for assessing climate change-induced L&D**

The proposed framework (Figure 7) for Nepal is based on global and national discourses which recognized that there are limits and constraints to adaptation and DRR measures. There are particular types of approaches to address L&D from climate change risk which includes: i) Avoided: Avoidable losses and damages can be or will be avoided by climate change mitigation and adaptation measures; ii) Unavoidable: adaptation and disaster risk reduction is not enough to avoid L&D, even though avoidance is possible, which is because financial, technical, and political constraints, as well as case-specific risk narrow down the adaptation and DRR space; iii) Unavoidable: L&D that cannot be avoided and adapted to through further mitigation/and or adaptation and DRR measures, for example, impacts from slow onset events, such as melting glaciers, that have happened already. Besides this, adaptation and DRR measures can be erosive and maladaptive creating further vulnerability; and due to the nature of the risk and vulnerability, no measures are adopted due to limits to or constraints on adaptation and DRR.

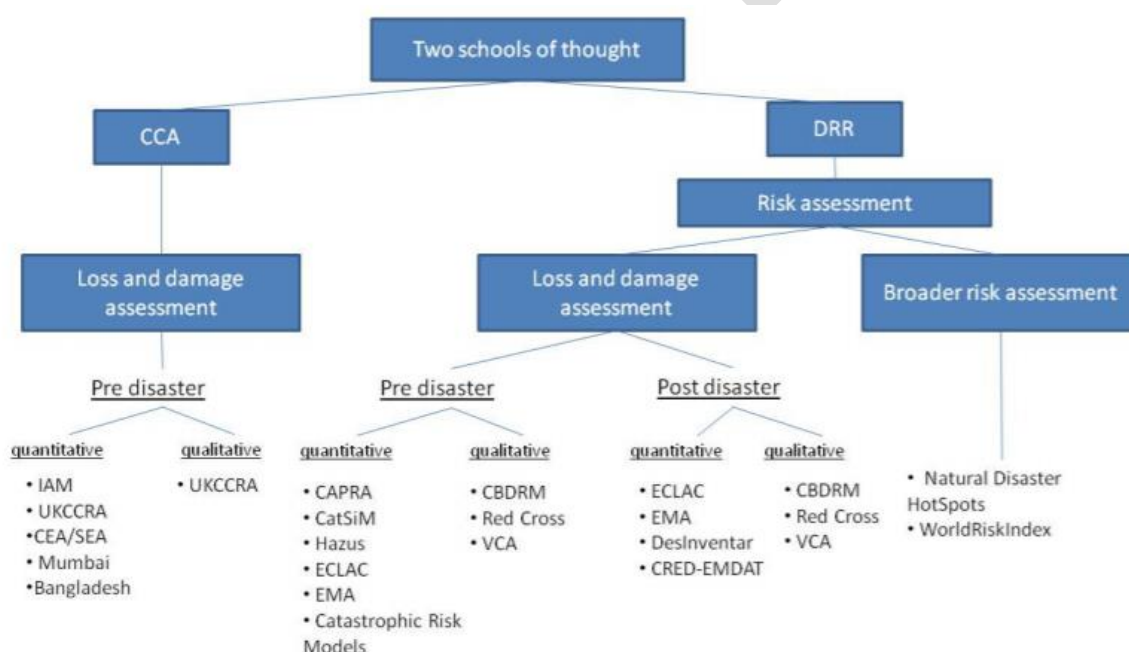
The IPCC's 5<sup>th</sup> Assessment Report (AR5) recognizes important biophysical, institutional, financial, social, and cultural barriers to adaptation, which, particularly when compounded, can lead to soft and hard adaptation limits. Hard limits occur when adaptive actions become infeasible to avoid risks, and hence impacts and risks become unavoidable. Soft limits arise when technological and socioeconomic options are not immediately available to avoid risks through adaptive action, meaning that impacts and risks remain un-avoided for the moment (Dow et al., 2013; Klein et al., 2014).

## 4. ASSESSMENT METHODOLOGY

### 4.1. Approaches and methods

Different methods and tools exist in assessing L&D in developing countries such as the Philippines (Gabriel et al., 2019) and Bangladesh (Bhowmik et al., 2021). One of the key challenges in most of the available methodologies and tools is their pre or post-disaster assessment focus. Post-disaster assessments provide relevant information on disaster L&D which is often crucial for validating and calibrating pre-disaster assessment (e.g., damage curves, potential impact estimation, etc.). However, it is also evident that much of climate change-related (future) impacts are not captured in these databases, such as the impacts and losses due to process-related or slow onset events, such as glacier melting. Hence, these databases also face severe constraints in the assessment of climate-related L&D. In this regard, the assessment of losses, damage, and risks due to creeping processes and accumulated shocks from non-extreme events is still a challenge (Birkmann et al., 2011, p. 24).

Figure 8 below provides an overview of approaches linked to the two schools of thought described above. While the largest databases for L&D (EM-DAT, DesInventar) have a clear post-disaster focus, most of the models focus on pre-disaster contexts.



**Figure 8: Overview of different approaches, methodologies, and tools for loss and damage assessment**

Source: UNFCCC, 2012

The World Risk Index (Birkmann et al., 2011; Welle et al., 2012, 2013) encompasses a new approach and methodology to assess the risk of people facing major damages and losses in the context of natural hazards and extreme events. The concept is based on the understanding that the risk of L&D due to climate-related hazards is not caused solely by external forces and natural phenomena such as floods or droughts. Exposure and vulnerability are also considered as important drivers of future risks. Many, but not all of these studies, also integrate

projections of increasing population and wealth or capital at risk in the quantitative estimates of future risk.

In the context of Nepal, one applicable methodology is to use the Vulnerability and Risk Assessment (VRA) methods that look into the hazard, exposure, vulnerability, and risk of climate change impacts which can help in identifying vulnerability and risks and respective adaptation and disaster risk reduction measures to avoid the L&D from the climate-induced extreme events. It will be equally important to identify adaptation and DRR options adopted by the communities, local government, and other stakeholders at various scales and assess their effectiveness. Besides, it will be important to identify the successful adaptation and DRR actions that have been effective to address L&D. On the contrary, it is necessary to assess the limitation and constraints of adaptation and DRR options and identify any residual impacts. Besides, there are instances where the risks and impacts are unavoidable. It is important to assess these unavoidable risks and impacts. The key elements of the method in understanding L&D (economic and non-economic) are:

- Information on climate-induced events: climate change stressors (slow and rapid onset weather events) and trends.
- Information on exposure, vulnerability, and baseline risk and scenarios.
- Information on observed impacts based on analysis of loss trend and interpretation of drivers of losses.
- Information on existing adaptation and DRR measures.
- Assess L&D:
  - Assess the adaptation and DRR responses
  - Assess unavoidable risks (cannot be avoided):
  - Assess the L&D post-intervention (economic and non-economic) un-avoided risks (

In assessing L&D, exposure of natural ecosystem, people, and infrastructure to climate risk in the specified area are important to recognize. According to National Oceanic and Atmospheric Administration (NOAA), "Risk areas identify geographically (typically on maps) those areas most likely to be affected by a given hazard. People and resources located within the risk areas are considered to be at risk from hazards [exposed] and may or may not be vulnerable to hazard impacts. The vulnerability of the people and resources within the risk areas is a function of their susceptibility to the hazard impacts and their capacity to cope or adapt".

## 4.2. Methodological steps for assessment

There are no universally agreed on methodological steps for assessment of L&D. There are several ways through which risk and vulnerability are assessed, including the assessment of the effectiveness of adaptation and DRR responses and identifying limits to adaptation. However, the proposed steps are an example of assessing L&D using the VRA framework.

**Step 1: Identifying key indicators for climatic extreme events:** In this step, the most relevant indicators need to be identified to assess the changes in climatic hazards. The indicators selected can be used for both quantifying and qualifying the extent, trends, and future scenarios of the climatic hazards. The indicators of changes in climatic hazards consisted of historical occurrence indicators such as frequency, magnitude, and areal extent and climate change-related indicators such as the changes in climate variables and climate extreme indices.

For example, 15 climate-related hazards mentioned in Tables 4 and 5 can be selected which are the most relevant hazards for Nepal in terms of average annual losses and deaths. The multi-hazard assessment is dependent on the chosen set of hazard indicators. Metrics used



to represent the selected indicators are crucial for the resulting hazard scenarios. Historical hazard occurrences in the form of several events and/or hazard-prone areas can be taken as indicators to obtain hazard indices based on historical climate. Climate change-related indicators can be used to infer future descriptive scenarios of climatic hazards.

**Table 4: Examples of Indicators for Climate Variables and Climate Extreme Indices**

Climate Variables and Extreme Indices	Indicators
Temperature	Change in Temperature (°C)
Precipitation	Change in Precipitation (%)
Very Wet Days (P95)	Change in Very Wet Days (%)
Extreme Wet Days (P99)	Change in Extreme Wet Days (%)
Consecutive Wet Days	Change in Consecutive Wet Days (%)
Number of Rainy Days	Change in Number of Rainy Days (%)
Consecutive Dry Days	Change in Consecutive Dry Days (%)
Warm Days	Change in Warm Days (%)
Warm Nights	Change in Warm Nights (%)
Warm Spell Duration	Change in Warm Spell Duration (%)
Cold Days	Change in Cold Days (%)
Cold Nights	Change in Cold Nights (%)
Cold Spell Duration	Change in Cold Spell Duration (%)

Source: MoFE, 2021

Table 5 below provides the list of indicators and their relative weights for the past scenario of climate-related hazards under historical climate.

**Table 5: Example of Indicators and their Relative Weights for the Past scenario of Climate-related hazards**

SN	Climatic Hazards	Indicators
1	Cold Wave	Number of Events (No.)
2	Heat Wave	Number of Events (No.)
3	Heavy Rainfall	Number of Events (No.)
4	Snowstorm	Number of Events (No.) Snow area (sq. km.)
5	Thunderbolts	Number of Events (No.)
6	Windstorms	Number of Events (No.)
7	Hailstorm	Number of Events (No.)
8	Floods	Number of Events (No.) Flood-prone area (sq. km.)
9	Landslides	Occurrence (No.) Landslide prone area (sq. km.)
10	GLOFs	Number of Events (No.) Potentially dangerous glacial lakes (No.) Distance from potentially dangerous glacial lakes (km)
11	Drought	Number of Events (No. of months) Drought-prone area (sq. km.)
12	Forest Fire	Number of Events (No.) Fire burnt area (sq. km.)
13	Fire	Number of Events (No.)
14	Avalanche	Number of Events (No.)

15	Epidemics	Number of Events (No.)
----	-----------	------------------------

Source: MoFE, 2021

**Table 6** provides the list of indicators for future scenarios of climate-related hazards.

**Table 6: Indicators for Future Scenarios of Climate-related Hazards**

SN	Climatic Hazards	Indicators
1	Cold Wave	Change in Cold Spell Duration (%)
2	Heat Wave	Change in Warm Spell Duration (%)
3	Heavy Rainfall	Change in Extreme Wet Days (%)
4	Snowstorm	Change in Precipitation (%) Change in Temperature (°C)
5	Thunderbolts	Change in Temperature (°C) Change in Precipitation (%)
6	Windstorms	Change in Temperature (°C)
7	Hailstorm	Change in Temperature (°C) Change in Precipitation (%)
8	Floods	Change in Precipitation (%) Change in Extreme Wet Days (%)
9	Landslides	Change in Precipitation (%) Change in Extreme Wet Days (%)
10	GLOFs	Change in Temperature (°C) Change in Warm Spell Duration (%) Change in Precipitation (%)
11	Drought	Change in Precipitation (%) Change in Consecutive Dry Days (%) Change in Number of Rainy Days (%) Change in Warm Spell Duration (%)
12	Forest Fire	Change in Consecutive Dry Days (%) Change in Warm Spell Duration (%)
13	Fire	Change in Consecutive Dry Days (%) Change in Warm Spell Duration (%)
14	Avalanche	Change in Precipitation (%) Change in Temperature (°C) Change in Warm Spell Duration (%)
15	Epidemics	Change in Temperature (°C) Change in Cold Spell Duration (%) Change in Warm Spell Duration (%) Change in Precipitation (%) Change in Consecutive Dry Days (%) Change in Consecutive Wet Days (%)

Source: MoFE, 2021

**Step 2: Identifying key indicators for exposure and vulnerability:** The main purpose of this step is to outline the most relevant indicators to measure and assess trends in exposure elements, state of sensitivity, and adaptive capacity of people and systems. For example, the relevant indicators can be identified from desk reviews and in consultation with experts.

**Table 7: Examples of Indicator of Exposure, Sensitivity, and Adaptive Capacity**

Types	Indicators
Exposure	<ul style="list-style-type: none"> <li>• Human population: Male, female, population size, density, number of households</li> <li>• Animal and wildlife population: Livestock population - dairy cattle, goat, sheep, pig, poultry, duck; wildlife population</li> <li>• Natural systems: Forest, non-timber forest products (NTFPs), protected areas, water bodies (groundwater, river, snow cover, glaciers), wetlands and watershed area, built-up and municipal area, the area under key cereal crops, land area under permanent meadows, and pasture</li> <li>• Services and infrastructures: Airport, road, bridges, buildings, hospitals, dams, hydropower, and transmission lines drinking water supply schemes, industries, vehicles, fish farms and ponds, trekking routes, hotels, surface irrigation schemes, cultural and archaeological sites</li> </ul>
Sensitivity	<ul style="list-style-type: none"> <li>• Demographic characteristics: Gender (male and female); urban and rural population, age group (children, elderly, youth, adult), population density, economic status (poor, rich)</li> <li>• Socio-economic characteristics: Population growth, population density, sex ratio, <i>Dalit</i> and <i>Janajati</i> population, differently-abled, and people with health issues, poverty incidences, female household population, smallholder farmers, landless population, refugees, slum dwellers, orphans, the dependency ratio</li> <li>• Characteristics of infrastructures: types of infrastructures, age of infrastructures, location of infrastructures (proximity to hazards), build-up and types, repair and maintenance status, strength and robustness, etc.</li> <li>• Biophysical factors: Slope, soil types, topography, the trend of change in land use and land cover, the trend of change in snow cover, water flow, forest types, species richness</li> <li>• Intrinsic characters- forest types, slope, landslide &amp; flood intensity</li> </ul>
Coping and adaptive capacity	<ul style="list-style-type: none"> <li>• Socio-economic capability: Human Development Index (HDI), Gross National Income (GNI), Gender Development Index (GDI), Gross Domestic Product (GDP), economically active population, labour productivity, land ownership by female</li> <li>• Access to goods and services: Access to roads, infrastructures, communication, technology, education, health facilities, seeds, and planting materials and fertilizers, households with radio and television, market services, rescue and rehabilitation centres, fire management equipment, waste disposal, water purification and refinement, standardized roads and alternative means of transportation</li> <li>• Access to technology: Climate-smart and climate-resilient technologies, risk reduction and risk management technologies, water-efficient technologies, soil and land management technologies, crop management technologies, early warning systems, bioengineering technologies, sustainable forest management, agro advisories</li> <li>• Access to finance: Investments and allocations, budget, insurance, credit, and grants facilities, blending and lending</li> <li>• Policy and institutions: Law, policy, plans, number of active agencies working, networks and groups, reinforcement of building codes</li> </ul>

	<ul style="list-style-type: none"> <li>Awareness and knowledge: Indigenous knowledge, knowledge on climate change, and response measures</li> </ul>
--	---

### Step 3. Examples of Indicators for Loss and Damage Assessment

As discussed earlier, there are broadly two types of L&D. One is economic and another is non-economic. This step identifies the indicator for assessing the economic and non-economic sectors.

**Table 8: Scope of the Economic and Non-economic Loss and Damage**

Sectoral Category	Indicator	Subcategory
Social	Settlements	Housing plot
		Houses: <ul style="list-style-type: none"> <li>Concrete</li> <li>Non-concrete</li> </ul>
	School Buildings	
	Office Buildings	
	Temples	
	Households Migrated/Displaced	
Production	Area under Irrigation	Paddy
		Wheat
		Millet
		Potatoes
		Vegetables
	Unirrigated Land Area	Maize
		Fruit
		Others
		Paddy
		Wheat
		Millet
		Potatoes
		Vegetables
Livestock		
Area of Forest Affected (NELD)		
NTFPs (NELD)	Lost Medicinal Plants	
Infrastructure	Highways	National Highway
		Feeder Roads
		District Roads
		City Roads
	Bridges	
	Culverts	
	Trails	
	Suspension Bridges	
	Rivers	Embankments
		River Trained
	Energy	
Hydropower Plants		

		Transmission Pylons
		Transmission Lines
		Micro-hydro Plants
		Watermills (ghatta)
		Solar Plants
		Hybrid Plants
		Biogas Plants
		Windmills
	Irrigation System	Headwork
		Canals
	Drinking-Water Supply Scheme	Gravity System: Intake, Pipeline Storage Tanks Tap Stand Point Source
		Rainwater Harvesting Tanks
		Tube-wells
	Sanitation	Toilets
	Communication Systems	Fiber Cable Line
		Mobile Towers

#### Step 4: Data Collection and Analysis

The data sources determine the availability and quality of data. The data sources can be obtained from government agencies, regional and global centers, international and national organizations, and other stakeholders. Interviews, one-on-one meetings, exploratory surveys, and consultations with experts and related stakeholders and individuals can be valuable data collection methods. Survey software and Google Form can be used for the questionnaire survey. The filtering, cleaning, and normalization process should be conducted to ensure whether the collected or tabulated data were correct, complete, relevant, unique, properly formatted, and with a uniform unit. A min-max method can be adapted to normalize the quantitative dataset.

#### Step 5: Analysis of Climate-induced Hazards

The analysis consisted of the detection and attribution of changes in climatic hazards. 'Detection' is the process of demonstrating that climate has changed in some defined statistical sense, without providing a reason for that change. Changes in climatic hazards can be detected by assessing their trends. However, from a scientific point of view, assessing changes in climatic hazards rather than climate variables or climate extreme indices can be problematic for several reasons. First, the data that is available to study climatic hazards are biased towards recent years simply because of improved reporting, data keeping, communication technology, and early warning systems. Second, methods to compare reported events in an objective way considering biases are lacking. Third, even when corrected for improving communication technology, the number of reported climate-related disaster events may reflect factors representing not only the frequency of climatic hazards but the trends in vulnerability and exposure as well (WMO, 2009).

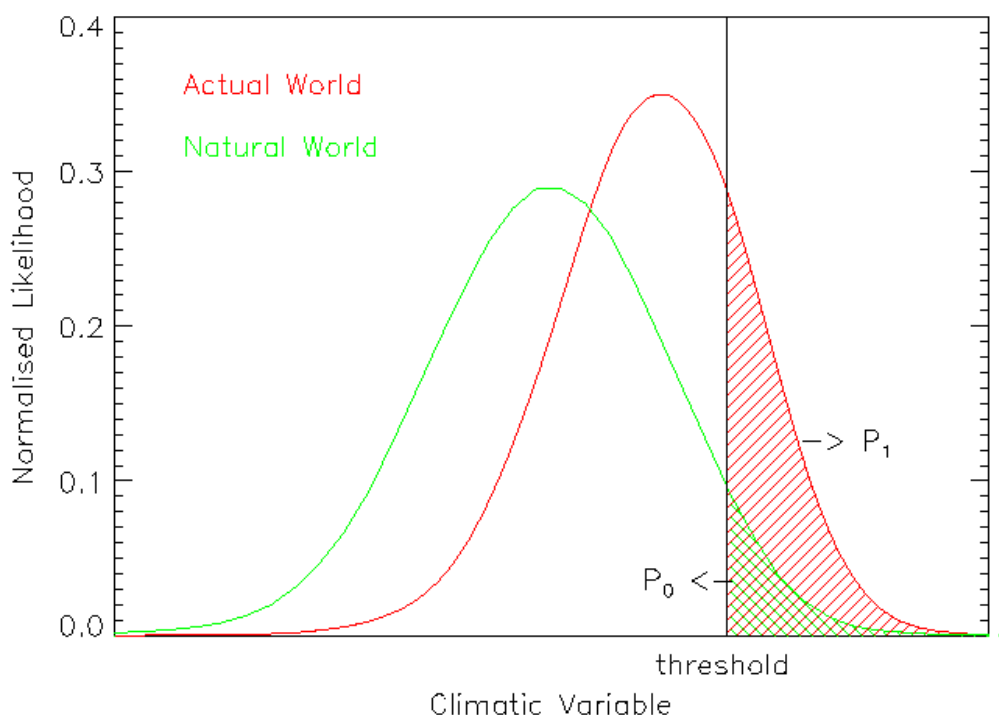
Disaster impacts highly depend on exposure and vulnerabilities. The occurrence (number of events) of climatic hazards is a natural phenomenon that is less likely affected by the exposure and vulnerabilities and hence the trend analysis on the occurrences of climatic hazards may reflect the influence of climate change.

The historical climate-induced disaster data should be analyzed to identify trends of climatic hazard occurrences and their impacts. The trend analysis should be conducted using graphical and statistical methods. The trends of climatic hazards then should be compared with the trends of climate variables and climate extreme indices to identify the attribution of climate change. Once the attribution of climate change is established, then the future scenarios of climatic hazards can be inferred using the future scenarios of climatic variables and climate extreme indices in a descriptive way.

The quantitative past scenarios of climatic hazards under historical climate can be generated using historical hazard indices. The historical hazard occurrences are used to compute historical hazard indices. Since the occurrence of a climatic hazard varies from place to place, historical hazard indicators could be based on the frequency of hazard, such as the number of times a specific event occurred in a specific place and/or areal extent of the hazard.

The future quantitative scenarios of climatic hazards can be obtained using the Fraction of Attributable Risk (FAR) method. FAR is the approach of separating causal factors of climatic hazards and calculating their relative contribution which is widely used to calculate how a particular climate driver has changed the probability of an event occurring (Allen, 2003, Stott et al., 2004). FAR is the fractional change in the likelihood of exceeding a hazard threshold as a result of anthropogenic influences. It is important to recognize that this is a relative rather than an absolute metric.

Figure 9 shows the likelihood of risk in the natural world without climate change and the actual world with climate change. In Figure 8,  $P_0$ : Probability of exceeding a threshold in “world that might have been” (no anthropogenic forcings),  $P_1$ : Probability of exceeding a threshold in “world that is”. Then, the FAR is given by  $FAR = 1 - P_0/P_1$  (IPCC, 2007, pp. 698). Computing the FAR requires physically-based model simulations using only natural forcings and with anthropogenic climate changes separately.



**Figure 9: Likelihood of risk in the natural world, and actual-world**

Source: Stott, P. A., Stone, D. A., & Allen, M. R., 2004

### Example of the assessment of hazard

One example of assessment of hazard scenarios can be drawn from the recent report of MoFE. **Table 9** below presents the results of the Mann-Kendall test and Sen's slope for 14 climatic hazard events. Among 14 climatic hazards, all hazards except drought are in the increasing trend. The drought events are in decreasing trend. While trends of epidemic, avalanche, hailstorm, and drought are statistically insignificant, the trends of the other 10 hazards are statistically significant at a 5% level (MoFE, 2021).

**Table 9: Mann-Kendall Test Statistics for Linear Trend of 14 Climatic Hazard Events**

Hazard	Z-statistic	P-value	Sen's Slope	Significance (5%)
Fire	6.40	0.00	7.32	Yes
Thunderbolt	7.44	0.00	2.70	Yes
Wind Storm	5.23	0.00	0.57	Yes
Epidemic	1.63	0.10	1.16	No
Heavy Rainfall	4.53	0.00	0.25	Yes
Landslide	6.62	0.00	2.70	Yes
Flood	5.43	0.00	2.64	Yes
Avalanche	1.61	0.11	0.03	No
Hailstorm	0.34	0.74	0.00	No
Heat Wave	2.18	0.03	0.00	Yes
Cold Wave	3.70	0.00	0.00	Yes
Snow Storm	2.60	0.01	0.04	Yes
Forest Fire	1.96	0.05	83.50	Yes
Drought	-1.73	0.08	-2.39	No

Source: MoFE (2021)

The descriptive scenarios of climate variables and extreme indices under future climate change can be expressed in **Table 10** (MoFE, 2021).

**Table 10: Descriptive Scenarios of Climate Hazards Under Future Climate Change**

Climate Variables and Extreme Indices	Medium Term Scenario	Long Term Scenario
Increase in Temperature	<i>Likely</i>	<i>Likely</i>
Increase in Precipitation	<i>Likely</i>	<i>Likely</i>
Increase in Very Wet Days	<i>Likely</i>	<i>Likely</i>
Increase in Extreme Wet Days	<i>Likely</i>	<i>Likely</i>
Decrease in Rainy Days	<i>Likely</i>	<i>Likely</i>
Increase in Consecutive Dry Days	<i>About as likely as not</i>	<i>About as likely as not</i>
Increase in Consecutive Wet Days	<i>About as likely as not</i>	<i>About as likely as not</i>
Increase in Warm Days And Nights	<i>Likely</i>	<i>Likely</i>
Decrease In Cold Days And Nights	<i>Likely</i>	<i>Likely</i>
Increase in Warm Spell Duration	<i>Likely</i>	<i>Likely</i>
Decrease in Cold Spell Duration	<i>Likely</i>	<i>Likely</i>

Source: MoFE (2021)

### **Step 6: Analysis of Exposure, Vulnerability, and Risks**

Exposure data can be analyzed by consolidating or disaggregating into components such as the human system, natural system, and infrastructure. The indicator-wise data will be given weightage, it will be normalized and exposure index will be prepared.

The vulnerability of the identified sector can be analyzed with an aggregated value of sensitivity and adaptive capacity as shown in equation V. According to IPCC- AR5, vulnerability is a function of Sensitivity and Adaptive Capacity. The relationship illustrates a typical process and analysis of the chain of vulnerability and risk with the indicator-wise data of sensitivity, adaptive capacity, and exposure.

$$V = S - AC \quad (V)$$

Where,

V is the composite vulnerability indicator,

S is the sensitivity component of vulnerability and

AC is the adaptive component of vulnerability

Similarly,

Sub-sector-wise and cumulative risk of the forests and biodiversity, and watershed management are estimated as a function of Hazard Intensity, Exposure, and Vulnerability as shown in (VI).

$$R = H_{intensity} \times V \times E \dots\dots\dots (VI)$$

Where,

R is the risk index

$H_{intensity}$  is the hazard intensity,

V is the vulnerability and

E is exposure.

The final risk can be rescaled by dividing the outcome values by the maximum risk values of all administrative units as in equation (VII).

$$scale = R/\max(R), R \in \{admin\ units\} \dots\dots\dots (VII)$$

The climate change vulnerabilities and risks can be ranked into five categories (very low, low, moderate, high, and very high) for their threats or impacts by using the Jenks natural breaks (Jenks, 1967) method. The Jenks natural break is widely used for categorizing data. The VRA created the classes in such a way that the best groups of similar values come together and maximize the differences between classes. The features are divided into classes whose boundaries are set where there are relatively big differences in the data values. The natural break classes are characterized based on the variety of data an indicator possesses. Thus the natural break value may differ with the dataset/indicators.

From the analysis of data, maps, and indices for existing climate trends and projected scenarios for climate hazards, vulnerabilities and risks can be generated.

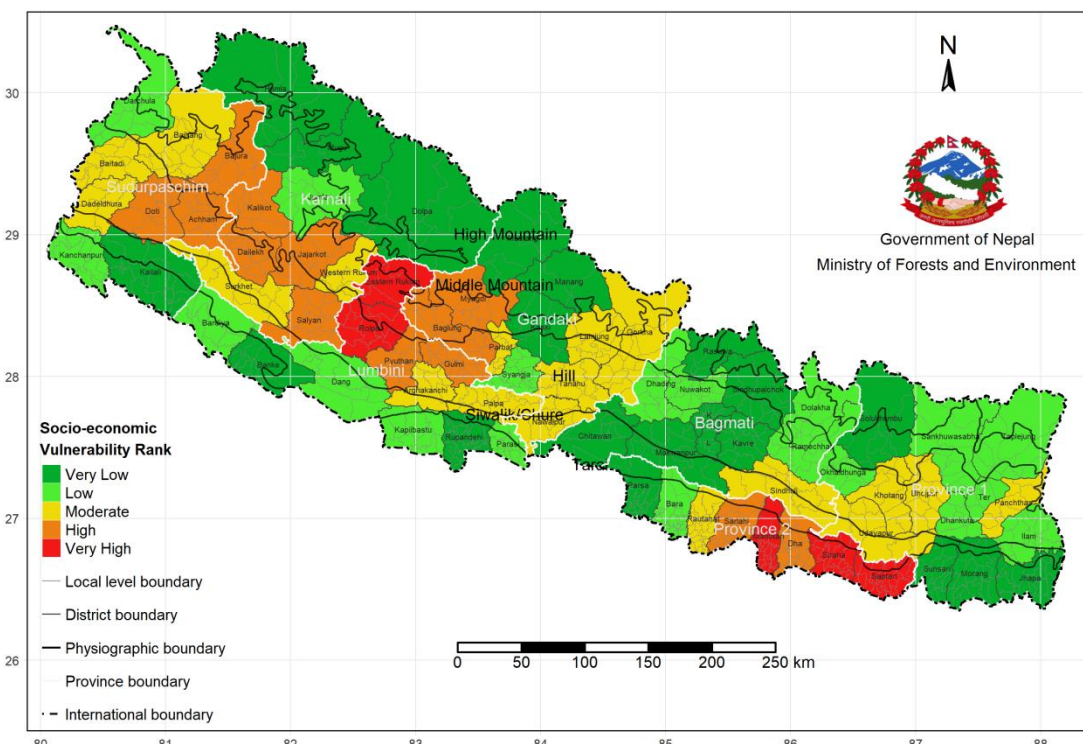
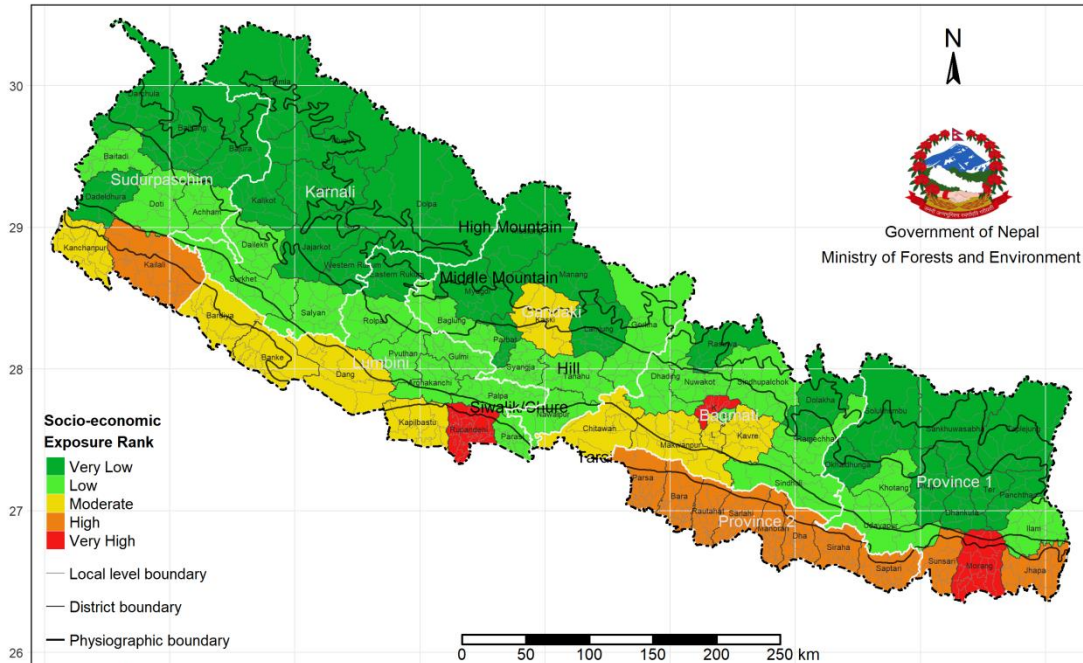
**Example of assessing exposure and vulnerability**

Impacts of climate extremes are determined by the climate extremes themselves as well as by exposure and vulnerability. The severity of the impacts of climate extremes depends strongly on the level of exposure and vulnerability. Without exposure, there is no impact. Exposure is a necessary but not sufficient condition for impacts. For exposed areas to be subjected to significant impacts from a weather or climate event there must be a vulnerability. Increasing exposure of people and economic assets is a major cause of long-term increases in economic losses from climate extremes. Besides, the impacts of climate extremes are differentiated by socio-economic factors such as gender, livelihood strategies, and cultural practices, and biophysical factors such as landscapes and ecosystems (MoPE, 2017). The



districts having very high and high disaster impacts have also high socio-economic exposure and vulnerability as shown in Figures 10 and 11 respectively.

**Figure 10: District-wise socio-economic exposure**



**Figure 11: District-wise socio-economic vulnerability**

Source: MoFE, 2021

According to MoFE (2021) transport, infrastructure, water, and tourism are among the key sectors sensitive to climate extremes. Besides, agriculture is also an economically exposed

sector that is vulnerable to climate extremes. The economy of Nepal relies heavily on agriculture, dominated by small-scale and subsistence farming. Livelihoods in this sector are especially exposed to climate extremes. The most vulnerable populations include the urban poor in informal settlements, internally displaced people, and those living in marginal areas. Population growth is also a driver of changing exposure and vulnerability. Women, children, senior citizens, people with disabilities, and socially and economically marginalized groups are also highly vulnerable (MoFE, 2021).

## **Step 7. Assessing the Loss and Damage (Quantifying and Qualifying Loss and Damage)**

The L&D from climate-influenced events is rising in Nepal. Given the current global climate change trend, the extent of L&D is likely to increase, making adaptation still more challenging. Already today the country is incapable of coping with the level of L&D even when adaptation measures are applied.

Although it is very difficult to attribute the disasters to climate change solely, the analysis shows that climate change is responsible for the changes in the frequency, magnitude, and impact of the disasters. Financial estimates for L&D are also difficult to make for several reasons. There are many uncertainties, from GDP and population growth to mitigation policy agreements and the effectiveness of mitigation and adaptation measures. Non-economic, non-market impacts such as loss of life or social disruption are difficult to estimate and the cost of loss in one place will be very different from the cost in another (Actionaid, 2010). The section below provides the process and output of assessing L&D from disasters.

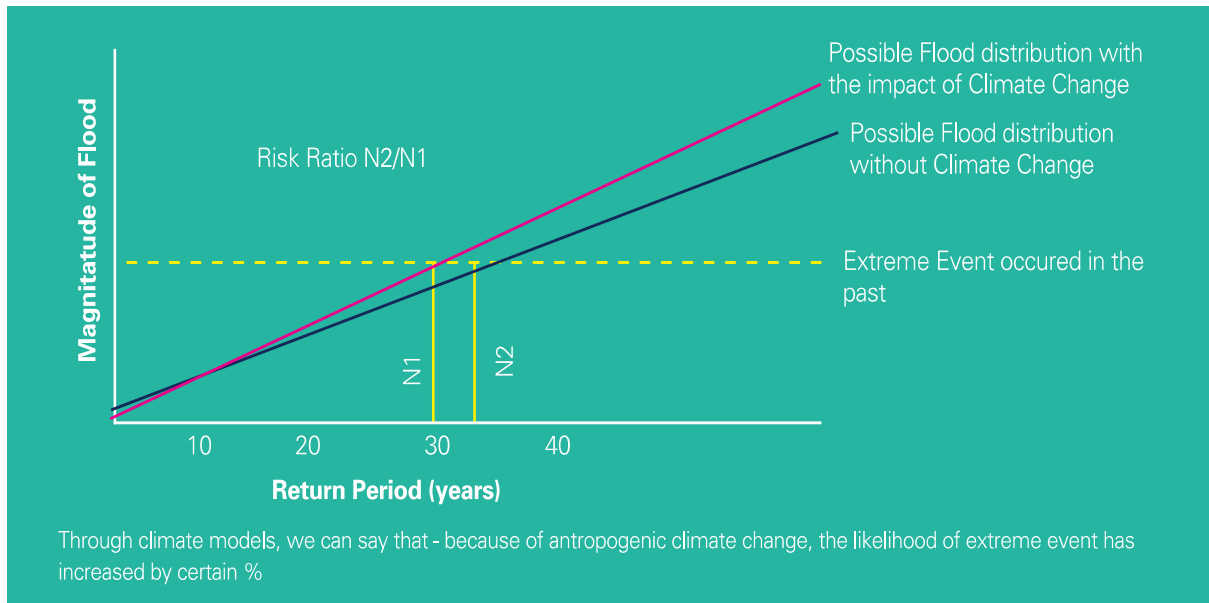
### **Step 7.1. Assessing the Loss and Damage of Past Disasters in Nepal**

There are mechanisms to look into the economic and non-economic impact of climate change, mostly the loss and damage of the past disasters in Nepal. The study carried out by the GoN, for example, shows that an indicative analysis of the impacts of climate change on water-induced disasters at the national level estimates that the additional average expected annual direct cost could be equivalent to 0.6-1.1%/year of current GDP by mid-century (over and above existing damages), with an upper estimate of almost 3% per year. The study identified that a major increase in investment is needed in the three areas assessed (hydropower, irrigation, and agriculture), estimated at US\$ 2.4 billion by 2030 (present value) (IDS-Nepal, PAC, and GCAP, 2014). Besides, based on discussions and the analysis of the climate and hydrological modeling results, the total additional adaptation costs to build resilience into the planned future sector development is approximately US\$ 500 million, (present value) above the baseline for the period of which the US\$ 200 million falls on the public budget (IDS-Nepal, PAC and GCAP, 2014).

#### **a. Accounting Economic Loss and Damage from Past Disasters In Nepal**

Due to anthropogenic climate change, the likelihood of extreme events has increased by a certain percentage (Otto et al., 2018). In Figure 12 below, the Y-axis shows the magnitude of flooding (depth) and the X-axis shows the return period of the event. The upper line shows the possible flood distribution with the impact of climate change. The lower line shows the possible flood distribution without climate change. The dotted horizontal line is an extreme past flood event. The same flood event would have a higher return period in a world with climate change, at a risk ratio of  $N_2/N_1$ . In simple terms, this means that the chance of occurrence of a higher magnitude event will increase and will become more frequent. In a hypothetical example, a

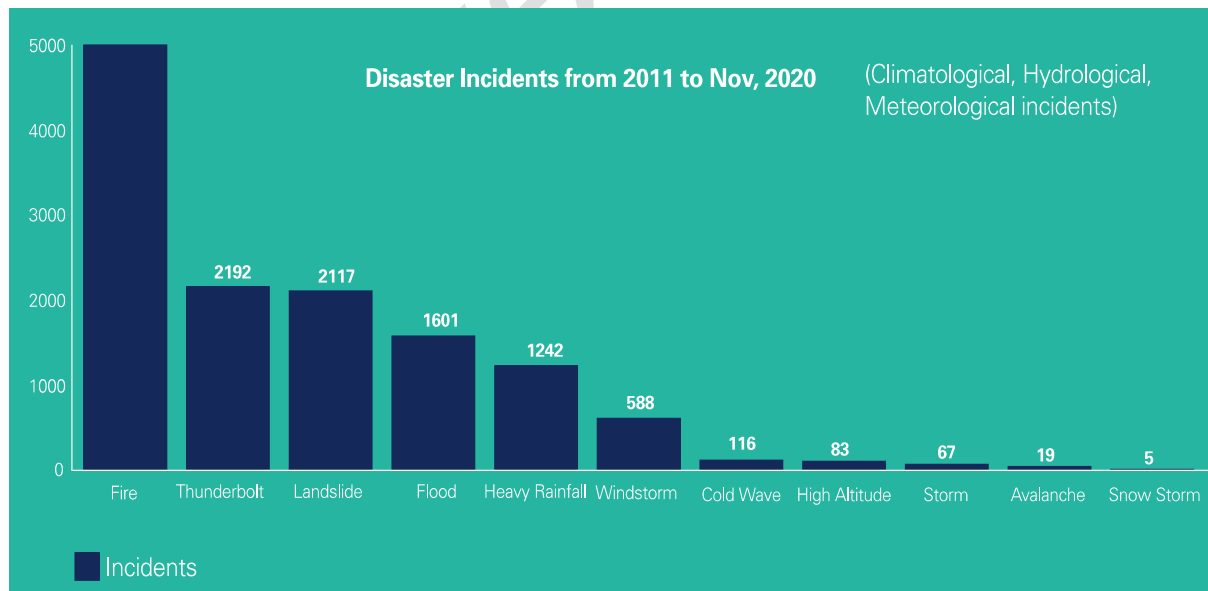
flood of magnitude with say 35 years will occur with a 30 year return period in a world with climate change.



**Figure 12: Impact of climate change on extreme events**

Created based on Otto, et al., 2014 and presentation [https://www.youtube.com/watch?v=ZP2yxYBn\\_Ow&t=245s](https://www.youtube.com/watch?v=ZP2yxYBn_Ow&t=245s)

The impact of climate change can be seen across all hazard types (hydrological, climatological, meteorological, and biological) except geophysical (earthquake, rockfall, etc.) and human-induced disasters (road, industrial, and chemical accidents).

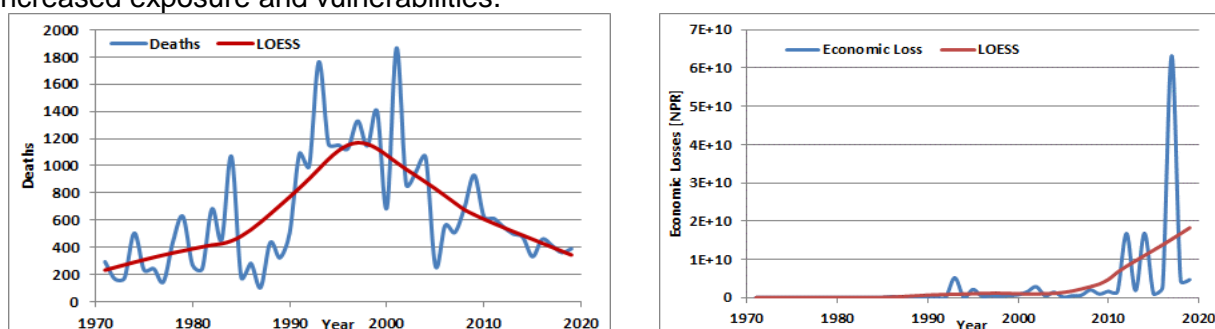


Source: DRR portal, bipadportal.gov.np

**Figure 13: Key climatological, hydrological, and meteorological incidents in Nepal**

In terms of losses, the trends of the number of deaths and economic losses from climate-induced disasters were analyzed from 1971 to 2019. Figure 14 shows deaths and economic losses from climate-induced disasters from 1971 to 2019 and Locally Estimated Point Cloud Smoothing (LOESS) lines indicating trends (MoFE, 2021). While climate-induced disaster-

related deaths are decreasing in recent years mainly due to improved early warning systems and better mitigation structures, there is an increasing trend of economic losses due to increased exposure and vulnerabilities.



**Figure 14. All Nepal trends of climate-induced disaster deaths**

Table 11 below presents the results of the Mann-Kendall test and Sen’s slope for deaths and economic losses. The Mann-Kendall test suggests that the economic losses are in a significantly increasing trend whereas the number of deaths is in an increasing trend but statistically insignificant.

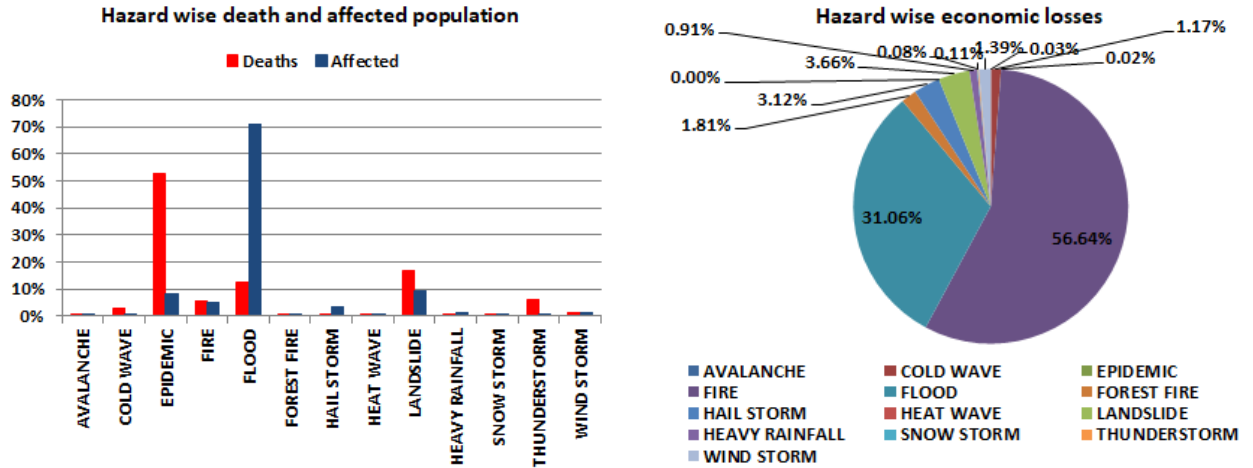
**Table 11: Mann-Kendall Test Statistics for Linear Trend of Climate-induced Disaster Deaths and Economic Losses**

Series	Z-statistic	P-value	Sen’s Slope	Significance (5%)
Deaths	1.67	0.094	5.44	No
Economic Losses	7.53	0.000	41854210	Yes

Source: MoFE, 2021

On average in the last 10 years, 647 people died from climate-induced disasters in Nepal each year which is about 65% of the total deaths from all disaster events except road (and other) accidents (MoHA, 2018). The maximum number of climate-induced disaster deaths occurred in 2001 where 1,866 people lost their lives due to epidemics, landslides, thunderbolts, fire, floods, heavy rainfall, and windstorm. The maximum economic loss of NPR 63,186 million occurred in 2017 during the Tarai floods (NPC, 2017), which is about 2.08% of GDP (at current price) of FY 2017/18 (MoF, 2018).

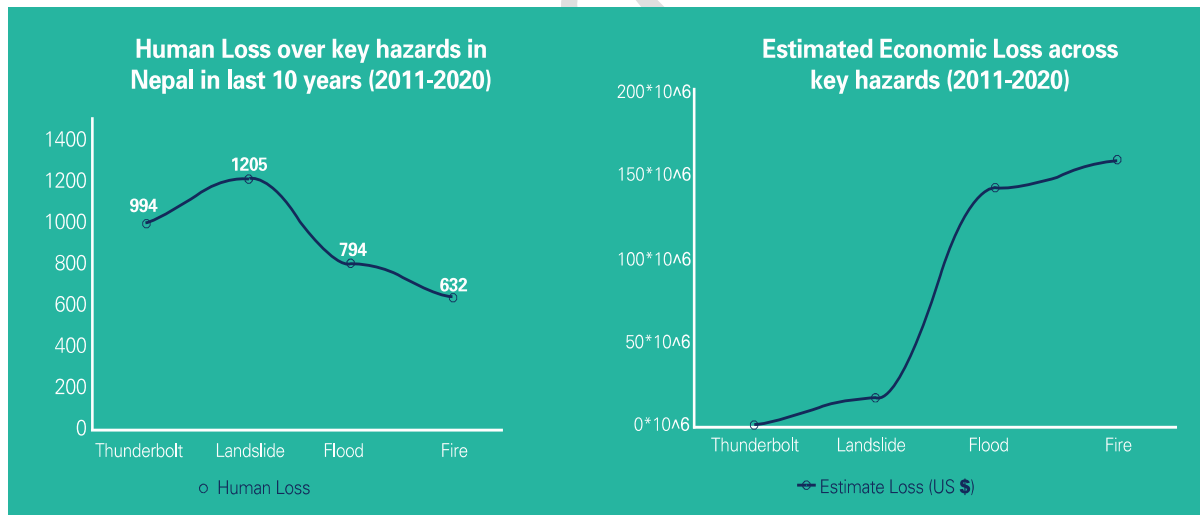
Floods, landslides, epidemics, and fires are the most devastating climate-induced disasters in Nepal. Figure 15 shows the percentage of deaths, affected population, and economic losses due to 13 types of climate-induced disasters in Nepal from 1971 to 2019. Hazard-wise comparison of deaths affected population and economic losses revealed that epidemics cause the most deaths (52.8%) followed by landslides (16.7%) and floods (12.7%). However, statistics point out that floods affect about 71% of the total affected population followed by landslides (9.5%) and epidemics (8.2%). Fires cause the most economic losses (56.6%) followed by floods (31%) and landslides (3.7%).



**Figure 15: Hazard wise deaths, affected people, and economic losses due to climate-induced disasters**

Source: MoFE, 2021

In addition, among the key hazards included in Figure 16, in the last 10 years (2011-2020), the greatest numbers of deaths (losses) have occurred from landslides and floods combined, and then from fires. The maximum economic loss is reported from fires, with flooding and landslides second and third respectively. Lightning caused the least economic damage. It is important to recognize that the economic damage is based on Nepal Police’s post-disaster Incident Reporting Mechanisms (IRM). It does not fully consider direct losses, let alone measure indirect L&D.



**Figure 16: Human and economic losses due to key hazards**

Source: NDRRP, 2019

In the discussion of L&D, the case of the droughts that affect many districts of Nepal causing crop damages is illustrative. Nepal faced drought in 1994, 2006, and 2009 (NDRRP, 2019) and among the drought years, the winters of 2006, 2008, and 2009 across central Nepal were the worst since 1981 (Dahal et al., 2016). According to United Nations World Food Programme (UNWFP), in 2009 dry winter led to a reduction in crops by 40% (mountain), 25% (hill), and 10% (tarai) compared to the previous year. The result was a decrease in national production of wheat and barley (the two major winter crops) respectively by 15% and 17%. In 2006, the

drought resulted in 11% loss of rice yields and 7% loss in wheat and maize, whilst in 2009, there was 15% and 17% loss in wheat and barley yields, respectively. The economic costs based on international market prices of 2006 and 2009 amounted to 1.9% and 0.4% of the current GDP. These events also result in indirect costs on health, welfare, lost production, lower household incomes, and food insecurity. These impacts are likely to exert negative multiplier effects in an economy that would elevate the full economic L&D. It is argued that the full costs when these impacts are considered would be 25% to 100% larger than the direct costs (Devkota et al., 2017). The discussions suggest that climate change will increase drought-related L&D but the available data is highly fragmented making systematic assessment difficult.

**Table 12: Accounting of Economic Loss and Damage Due to Climate-induced Disasters in Nepal**

Date	Nature of hazard	Region	Losses and Damages	
			Loss	Damage
			NELD	ELD
Rainfall from 19 <sup>th</sup> to the 21 <sup>st</sup> of July, 1993, Mid-mountain cloudbursts, and flood	Weather	An unprecedented number of landslides and floods in South-Central Nepal	1,460: Dead/missing	73,606 families affected, 39,043 houses completely/partially destroyed, 43,330 hectares of cultivated land washed away/covered with debris.  367 kilometers of roads, 213 large and small bridges, 38 small and large irrigation schemes, 452 school buildings, hospitals, and government offices were destroyed.
August 24, 1998, Rohini River and other Tarai floods	Weather	Ramgram Municipality, Nawalparasi	No death	Affected 279 families in Nawalparasi; washed away about 24 hectares of land, and property damage of NPR 680,000.
August 18, 2008 embankment breach	Agency failure	Kushaha	Killed 3/12 missing	65,000 people were displaced.
19 <sup>th</sup> and 21 <sup>st</sup> September 2008, flooding in Mid-and Far-west, Nepal	Weather	Banke, Bardiya, Kailali, and Kanchanpur Dang, Dadeldhur, Doti and Salyan	11 males and 15 females died and 2 males and 6 females/missing in Kailali District	2,152 houses were completely damaged, 12,962 houses partially damaged, 5,647 households lost stored grains, 12,552 households lost some stored grains, 18 VDCs and Dhangadi municipality affected,

				30,733 people in 5,961 households of Dekhatbhuli and Shankarpur VDCs and Mahendranagar Municipality in Kanchanpur District worst hit
2009 Drought	Weather		No death	More than 330,000 ha of agricultural land in the Tarai and western Hills/ Mountains were affected, summer crop damaged, diseases increased.
2009 Forest Fires	Weather	.	43 deaths, 12 injured	516 families affected, 375 livestock killed, 74 houses and 22 cattle sheds destroyed, loss of NPR 140 million, 100,000 cattle burned to death.
2009 Diarrhoea Epidemic in the Mid-western Hills	Weather	Mid-Western Development Region	143 deaths in Jajarkot, more than 2,000 ill, 42 dead in Rukum	20,000 families affected
2014	Weather	Kailali, Badia, Surkhet, Dang	222 dead 84 injured	5,167 houses fully damaged, 14,913 partially-damaged households, 6,859 displaced households  Affected population: 117,580,
2017	Weather	35 Tarai Districts	134 people dead, 22 injured	Affected a total of around 1.7 million people; more than 190,000 houses were destroyed or partially damaged; tens of thousands of people were displaced and many rendered homeless; NPR 60,716.6 million lost
2020	Weather	58 Districts	297 dead 64 missing  223 injured.	NPR 51 million lost

Source: NCVST, 2009; NPC, 2017; BIPAD.portal, McKlune et al., 2014

The 2021 recent disasters in Nepal are examples of L&D. On 14 June 2021, a large flood struck the Melamchi area of Nepal following an early monsoon downpour. The flooding caused high levels of damage. Three people are confirmed to have died, whilst 17 more remain missing. Many houses were destroyed. It is now clear that this event resulted from the breach of a landslide dam upstream, releasing a torrent of debris and floods that struck settlements. The case study is provided in **Annex 1**.

### b. Accounting Non-Economic Loss and Damage from Past Disasters in Nepal

The assessment and valuation of non-economic loss and damage is a key requirement for dealing with NELD in line with the Paris Agreement and as demanded by those affected. The accounting of non-economic loss and damage from past disasters in Nepal is difficult due to the lack of a database. All the data recorded in the national system are economic losses and limited to a few areas.

Another conceptual framework is proposed, placing the assessment categories into a matrix with four different domains of NELD, namely the material-intrinsic domain, the material-instrumental domain, the non-material-intrinsic, and the non-material-instrumental domain (Serdeczny/Waters/Chan, 2016, p. 12ff.). Refer to **Table 13** for an example.

**Table 13: NELD Framework of Assessment**

	<b>Intrinsic</b>	<b>Instrumental</b>
<b>Material</b>	Biodiversity: Biodiversity/species, biodiversity loss  Place: Loss of culturally important landscape, habitat destruction  Human life: Loss of life  Artifacts: Destruction of cultural sites/cultural heritage	Production site: Loss of productive land  Communal site: habitat destruction (markets, religious sites)  Ecosystem services:
<b>Non-material</b>	Intrinsic value: Dignity (human mobility), the intrinsic value of biodiversity, physical and mental well-being	<u>Agency</u> Social cohesion, peacefully functioning society Security Adverse health impact Physical and mental well being Ability to solve problems collectively Ecosystem services Sovereignty Health Education  <u>Identity (knowing/belonging)</u> Traditions/religion/customs Loss of knowledge/ways of thinking The decline of indigenous and local knowledge Loss of identity (social bonds/relations, sense of place)

The four main categories of possible valuation techniques are:



- Economic valuation: Values a change in the provision of a service or the value of an asset; in other words, it compares the relative merits of actions. The method has severe limitations in the case of incommensurable NELD.
- Multi-criteria decision analysis (MCDA): Values complex situations based on a set of criteria against which various alternative options are to be evaluated; scores but doesn't use monetary terms. This method may be appropriate for highly intangible NELD.
- Composite risk indices: Relatively similar to MCDA, values vulnerability based on multiple criteria.
- Qualitative & semi-quantitative approaches: Values and provides information in a more disaggregated form. Scoring is semi-quantitative or qualitative, and simple. A good example is the United Kingdom's Climate Change Risks Assessment (CCIAV).

Although there is no database in terms of NELD assessment in Nepal, Practical Action has come up with case studies of L&D in Nepal. The study examined the impacts of the 2014 floods in the Karnali River as a typical case of climate-induced L&D. The study focused on flood impacts on four key sectors — agriculture and food security, shelter, education, and protection, given their importance in people's lives. These losses and damages have been captured based on discussion with the affected communities and interviews with key actors with first-hand experience working in flood response and recovery.

**Table 14. Assessing NELD of 2014 Floods in the Karnali River**

<b>Individual</b>	
<b>Life</b>	<ul style="list-style-type: none"> <li>• Loss of childhood, disruption in education, and children get affected mentally, physically, and socially</li> <li>• Stress and anxiety</li> <li>• A deep sense of dependency</li> <li>• Loss of life</li> <li>• Fear and pain</li> <li>• Increased vulnerability</li> </ul>
<b>Health</b>	<ul style="list-style-type: none"> <li>• Illness due to water-borne diseases</li> <li>• Increased morbidity</li> <li>• Effects on infants' normal growth</li> </ul>
<b>Human Mobility</b>	<ul style="list-style-type: none"> <li>• Migration</li> <li>• Loss of sense of belonging</li> <li>• Increased male migration to India</li> <li>• Homesickness for people working in India - constantly worried about the well-being of their family</li> <li>• Women returning feel helpless and haunted by the unpredictability of the situation</li> </ul>
<b>Society</b>	
<b>Territory</b>	<ul style="list-style-type: none"> <li>• Not considered in the study as it related to political borders</li> </ul>
<b>Cultural Heritage</b>	<ul style="list-style-type: none"> <li>• Rituals, practices lost with having to cope in a new environment, location</li> </ul>
<b>Indigenous Knowledge</b>	<ul style="list-style-type: none"> <li>• Traditional weather and flood prediction practices</li> </ul>

<b>Societal/Cultural Identify</b>	<ul style="list-style-type: none"> <li>• Loss of dignity, identity, and security</li> <li>• Exposure to different vulnerabilities and uncertainties</li> <li>• Loss of networks</li> <li>• Possibility of an increase in child labor and child marriage</li> </ul>
<b>Biodiversity</b>	<ul style="list-style-type: none"> <li>• The gradual extinction of bird species, frogs, and useful insects such as bees, and an increase in unheard-of diseases, agricultural pests, and invasive alien plant species</li> </ul>
<b>Ecosystem services</b>	<ul style="list-style-type: none"> <li>• Loss of commodity, leasehold, and agriculture and forests badly impacting soil fertility, floods mitigation, and recharging of water leading to multiple losses</li> <li>• Loss of agriculture biodiversity</li> <li>• Soil loss</li> </ul>

Source: Singh et al., 2021

### Step 7.2. The Climate-Induced Loss and Damage of Recent Disasters in Nepal

A solid case of climate-induced loss and damage can be cited from recent rainfall patterns and floods in the mountain districts of Nepal. The pre-monsoon and the first month of the monsoon (June) of 2021 had broken all scientific precipitation records in Manang and Mustang districts. The two weather stations of Manang (Humde) and Mustang (Jomsom) showed extreme rainfall events. The Humde weather station of Manang recorded 232 mm of pre-monsoon rain this year while the average pre-monsoon rainfall in the past six years was 135 mm. Similarly, the Jomsom weather station of Mustang recorded 142 mm of rain compared to the normal 70 mm during March-May. The Humde station had received 172% greater precipitation than the normal.

During June 2021, 12- 16 (5 days period), the Humde station received 175.8 mm and the Jomsom station received 86.5 mm precipitation (**Table 15**). On 15 June, the Humde station recorded 54 mm rainfall and 82.23 mm on 16 June which was the highest rainfall recorded since 2015. Similarly, from 1958 to 2020, the highest recorded precipitation at Jomsom in June was 75.8 mm. It also illustrated that the trend of extreme precipitation in June was observed to be increasing at a rate of 0.09 mm per year.

**Table 15: Rainfall Data of Humde and Jomsom Weather Station Recorded in 2021**

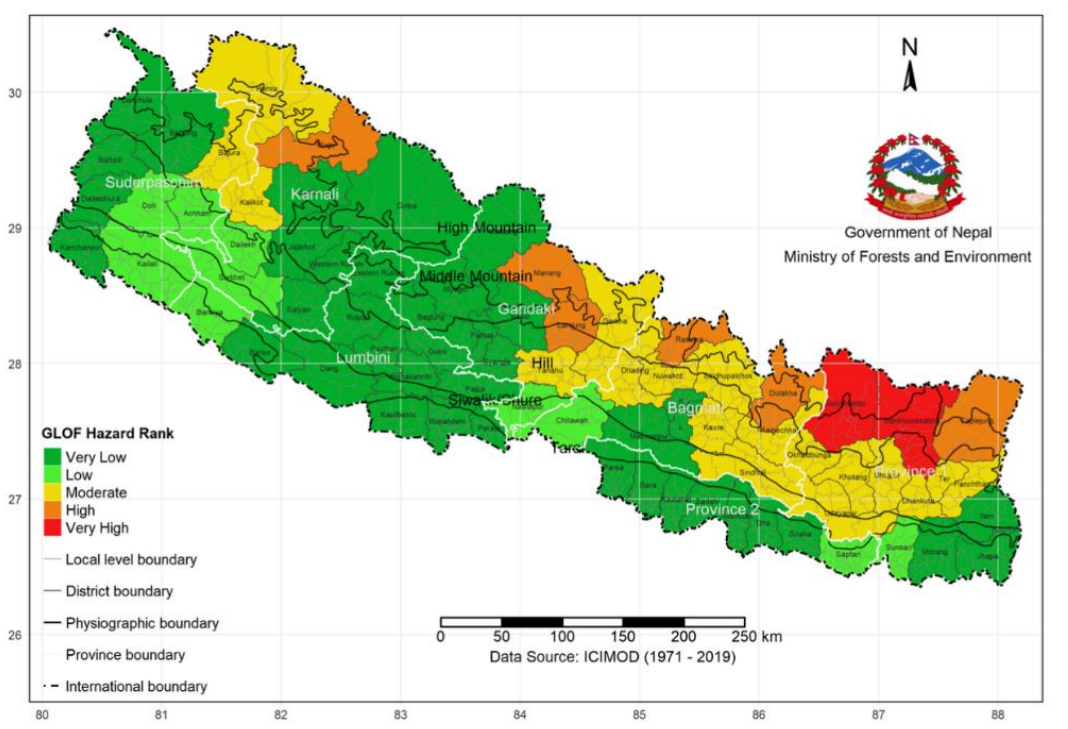
Weather Station	Average pre-monsoon 2015-2020 (mm)	Pre-monsoon 2021 (mm)	12-16 June 2021 (mm)
Humde (Manang)	135	232	175.8
Jomsom (Mustang)	70	142	86.5

Incessant heavy rainfall in the pre-monsoon and monsoon season of 2021 had flooded many small rivers and rivulets in Manang with floodwaters entering villages and causing damage. Floods in the Marshyangdi River and the landslides triggered by continuous rainfall had displaced more than 350 people. Due to floods and landslides, 24 households from Sirantal area and 11 households from Thoche area of Naso Rural Municipality were displaced and rescued by Nepal Army. Manang faced one of the worst situations 65 km long road connecting the district with others was damaged along with 5 suspension bridges and 1 Bailey bridge due to the floods.

The local communities and stakeholders are shocked and surprised to see the rainfall pattern in recent years. They said the rainfall is very intense and heavy with more rainfall in a shorter duration of time. A resident of Thoche observed, 'The local houses and other infrastructure are not built to cope and adapt with the current changes in the rainfall pattern.' Likewise, a resident of Sirantal also shared the view that the disasters they experienced are devastating and abnormal.

### 7.3. Attributing Loss and Damage Triggered by Climate-Induced Disaster: A Case of Snow Melting and Glacier Lake Formation in Nepal

One unique example of climate-induced L&D is glacier melting and the formation of glacial lakes. According to the information available, Nepal has experienced at least 24 Glacial Lake Outburst Flood (GLOF) events in the past. Of these, 14 are believed to have occurred in Nepal itself, and 10 were the result of flood surge overspills across the China-Nepal border (Tibet Autonomous Region). Based on the GLOF hazard, the mapping shows (Figure 17) that the eastern Himalayas are the hotspots of GLOF hazards. Mostly GLOF is concentrated in Province 1, Bagmati Province, Gandaki Province, Karnali Province, and Sudurpashchim Province (MoFE, 2021).



**Figure 17: Map showing the GLOF hazard ranking in Nepal.**

Source: MoFE, 2021

The past GLOFs have caused considerable damage and loss of life. The Bhote Koshi and Sun Koshi GLOFs of 1964 and 1981 and the Dig Tsho GLOF of 1985 are some examples. The 1981 event damaged the only road link to China and disrupted transportation for several months (ICIMOD, 2011), while the Dig Tsho GLOF destroyed the nearly completed Namche Small Hydroelectric Project, in addition to causing other damage farther downstream. The flood destroyed bridges, homes, agricultural land, and the nearly completed Namche Small Hydropower Plant, two weeks before its inauguration, which resulted in an estimated loss of US\$ 1.5 million. Remarkably, only 4-5 people lost their lives in the floods because a Sherpa festival was in progress and few people were walking the trails at the time (ICIMOD/UNEP, 2002; Kattelmann, 2003). The source of the event was inside the Tibet Autonomous Region of China, indicating the necessity for international regional cooperation to address the

problem. For run-of-river hydropower plants, the main risk is related to the reduction in river flow during drier periods (and associated reduction in output) and increased flows in wet periods (which means facilities need to be planned with greater capacity).

**Table 16: Major GLOF Events and Loss and Damage**

	Date	River basin	Lake	Cause	Losses
<b>Entirely within Nepal</b>					
1N	450 years ago	Seti Khela	Machhapuchchhre	Moraine collapse	Pokhara valley is covered by 50-60 m deep debris.
2N	3 Sep 1977	Dudh Koshi	Nare	Moraine collapse	Human lives, bridges, and others
3N	23 Jun 1980	Tamor	Nagma Pakhari	Moraine collapse	Villages destroyed 71 km from the source
4N	4 Aug 1985	Dudh Koshi	Dig Tsho	Ice avalanche	Human lives, hydropower station, 14 bridges, etc.
5N	12 Jul 1991	Tama Koshi	Chubung	Moraine collapse	Houses, farmland, etc.
6N	3 Sep 1998	Dudh Koshi	Tam Pakhari	Ice avalanche	Human lives and more than NPR 156 million
7N	15 Aug 2003	Madi River	Kabache Lake	Moraine collapse	Not known
8N	8 Aug 2004	Madi River	Kabache Lake	Moraine collapse	Not known
9N	Unknown	Arun	Barun Khola	Moraine collapse	Not known
10N	Unknown	Arun	Barun Khola	Moraine collapse	Not known
11N	Unknown	Dudh Koshi	Chokarma Cho	Moraine collapse	Not known
12N	Unknown	Kali Gandaki	Unnamed (Mustang)	Moraine collapse	Not known
13N	Unknown	Kali Gandaki	Unnamed (Mustang)	Moraine collapse	Not known
14N	Unknown	Mugu Karnali	Unnamed (Mugu Karnali)	Moraine collapse	Not known
<b>Originated in TAR/China and caused damage in Nepal</b>					
1C	Aug 1935	Sun Koshi	Tara-Cho	Piping	66,700 square meter of wheat fields, livestock, etc.
2C	25 Aug 1964	Trishuli	Longda	Not known	Not known
3C	21 Aug 1964	Arun	Gelhaipuco	Glacier surge	Highway and 12 trucks
4C	1964	Sun Koshi	Zhangzangbo	Piping	No remarkable damage

5C	1968	Arun	Ayaco	Not known	Road, bridges, etc.
6C	1969	Arun	Ayaco	Not known	Not known
7C	1970	Arun	Ayaco	Not known	Not known
8C	11 Jul 1981	Sun Koshi	Zhangzangbo	Ice Avalanche	Hydropower station
9C	27 Aug 1982	Arun	Jinco	Glacier surge	Livestock, farmland
10C	6 Jun 95	Trishuli	Zanaco	Not known	Not known

Source: Bajracharya et al., 2020

A unit-loss approach can be used to estimate the potential loss of GLOF (Khanal et al, 2015). First, the value of individual properties was calculated; these were then added together to derive a total potential loss figure. The estimated losses were grouped into four categories: direct damage to real estate (land and houses); indirect damage to agriculture (crops and livestock); direct damage to public infrastructure (roads, trails, bridges, schools, office buildings, temples, water mills, transmission lines, hydropower, and others); and indirect secondary damage (such as loss of revenue from trade and hydropower, resulting from damage to roads, bridges, and hydropower dams or powerhouses). Intangible losses were also discussed. The local prevailing purchase values of household assets, including land, crops, livestock, and others, and replacement cost of infrastructure, were used in estimating the monetary value of the elements exposed to a potential GLOF risk. Information on the per-unit local prevailing purchase values was collected during the group discussions for each section/block. The national average cost per unit was used to estimate the replacement cost of larger infrastructure such as roads and hydroelectric infrastructure (Khanal et al., 2015). All values were based on the prices reported at the time of the fieldwork (**Table 17**).

**Table 17: Monetary Value of Elements Potentially Exposed to Glacial Lake Outburst Flood Risk (US\$ thousands)**

Sectors	Imja (Dudhkoshi)		Tsho Rolpa (Tamakoshi)		Thulagi (Marsyangdi)		Lumuchimi (Bhotekoshi/Sunkoshi)	
	Model	Max	Model	Max	Model	Max	Model	Max
Real Estate	8,917	31,729	1,411	6,524	2,036	6,685	15,889	40,606
Agriculture	932	1,680	117	330	234	519	246	996
Public Infrastructure	2,037	2,084	319	1,928	335,784	339,469	98,845	109,446
Revenue	7	7	0	0	68,678	68,678	37,762	37,762
Total	11,894	35,501	1,847	8,781	406,731	415,351	152,741	188,810

Model = modelled GLOF scenario. Max = maximum affected level.

Source: Khanal et al., 2015

## **Step 8. Assessment of Avoided Risks through Adaptation and DRR Options**

Once the risk and vulnerability and estimation of post-disaster L&D and future economic implications are identified, it is important to assess which risk and vulnerability can be avoided through adaptation and DRR actions, as described above, and those that are not possible to avoid or have some limitations in terms of making responses.

**Step 8.1. Assess the Avoided Risk through Adaptation and DRR Options:** It is important to assess L&D that can and will be avoided by climate change mitigation and/or adaptation measures. It is important to list the successful adaptation and DRR actions that have helped in avoiding the risk and vulnerabilities which ultimately avoid L&D. When mountain glaciers melt, the adaptive response may be building or strengthening dykes to contain the glacial lake, and by increasing the ability to surround landscapes to hold the water recharge, such as through reforestation.

The assessment could look into the following aspects:

- Can the existing and future risks of climate change impacts be avoided? If yes
  - What are the available and existing and potential adaptation and DRR options?
  - How effective were/are these options in addressing the risk and impact? Are these options sufficient?

There are different methods and tools in identifying adaptation options. It is mostly done through a participatory process of engaging experts, planners, communities, and practitioners. With regards to the assessment of the adaptation options at all scales, the assessment should include elements of:

- Effectiveness - Achieving objectives: to reduce vulnerability or risk, increase adaptive capacity, or achieve an enhanced level of protection.
- Flexibility - How far can we adapt: Successful adaptation has to be flexible, not least because of the potential range of climate changes projected under different emission scenarios.
- Equality - Inequality dimensions to adaptation: Address inequalities between sectors, between regions, and society.
- Effectiveness - Cost-effectiveness. Successful adaptation will involve deciding on acceptable levels of risk (defined to some extent by communities, policy-makers, and funders in a collaborative way) as a trade-off with the resource investments needed to reduce this risk, and whether this should involve maintaining or improving the current levels of risk and resilience accordingly.
- Sustainability - The wider implications of adaptation: Sustainable adaptation is likely to include strong elements of partnership-building, community engagement, education, and awareness-raising, as well as focusing on interventions that are 'mainstreamed' into existing development processes and mechanisms, and cutting across key sectors (water management, agriculture, health, and education).

### **Examples of Risk Reduction measures**

For example, if glacier melting is identified as one of the current and future risks of climate change impact, it would be better to look into the feasibility of avoiding the risk from the successful adaptation and mitigation measures like draining the lake to avoid GLOF or establishing GLOF monitoring system and early warning stations, etc. The need to work on GLOF risk management was recognized at both national and local levels after the devastating GLOF event of 1981. In Nepal, the National Strategies for Disaster Risk Management (2009), National Adaptation Program of Action (2010), and Climate Change Policy (2011) and in China the National Adaptation Strategies for Climate Change and National Disaster Reduction Plan (2006–2010) have emphasized the need to respond to GLOF issues urgently.

### Step 8.2. Un-avoided Risks (constraints and limits of response measures) Both Soft and Hard measures: L&D

Once the potential climate risks are identified, it is imperative to analyze the risk that is acceptable, tolerable, and intolerable. This will help understand the limits of adaptation interventions and the resulting loss and damage. Literature shows different models can be used to identify risk categories. Mostly expert judgment is used.

Limits to adaptation can be breached when catastrophic extreme events resulting from climate change become increasingly severe or frequent, such as severe droughts. It can also prove impossible to adapt to slow-onset impacts that continue to develop and leave behind territories uninhabitable and unproductive. Increasing temperatures, glacial retreat and related impacts, land and forest degradation, loss of biodiversity, and desertification are all major challenges to adaptation efforts (ActionAid, Care, WWF, 2015).

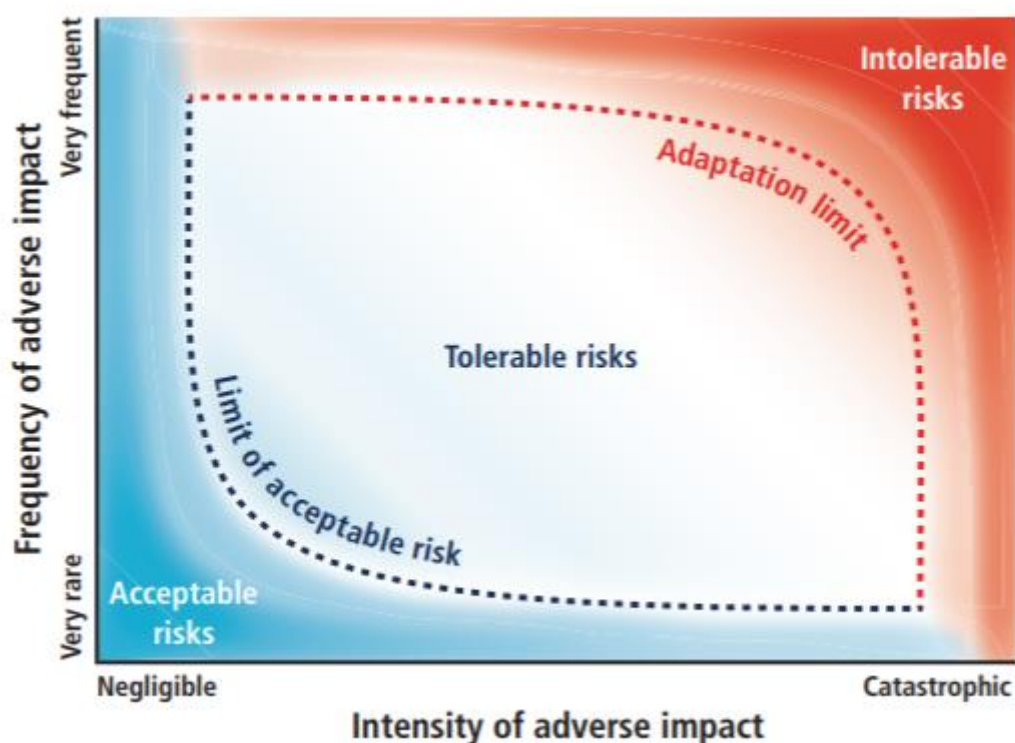


Figure 18: Understand Intolerable Risks and Adaptation Limits

Source: Klien et al., 2014

One of the reasons why some adaptation measures is not taken or losses and damages remain unavoids is actors may be subject to socio-economic constraints, especially international financing, and/or implementation constraints, although, at least in theory, these measures could have been taken. Further constraints to adaptation planning and implementation comprise a lack of technological or knowledge resources and institutional characteristics that impede action.

The assessment of this adaptation limit and constraints can be done by looking at the effectiveness of adaptation options as described under section 8.1. The key questions relevant to explore are:

- What are the limits and constraints of adaptation and DRR options, including adaptation and DRR deficits?
- What implications does it have in addressing the risks and impacts of climate change?
- What are the residual risks and impacts due to this limit and constraints?

GLOF issue can be taken as an example for assessment. Of the 47 dangerous lakes in three river basins, 42 lakes are in the Koshi, 3 in the Gandaki, and 2 in the Karnali basins. Of these, 25 potentially dangerous glacial lakes (PDGLs) are in the Tibetan Autonomous Region, China, and flow across the border into Nepal, 21 PDGLs are situated in Nepal, and one is located in India (Bajracharya et al., 2020).

However, when glacial lakes burst (for example, through a sudden breaking up of large glacial pieces), even with an effective early warning system, the resulting floods can cause L&D destroying homes and harvests. It can also result in loss of life.

The L&D which goes beyond adaptation is, therefore, a critical issue for Nepal. The Himalayan ecosystem of Nepal has more than 30 million people living downstream of the glaciers (Action Aid, CARE, WWF, 2015). Major climate hazards such as GLOFs pose a serious risk to substantial investments, the country's social capital, and communities who live near the glaciers. Over the years, there have been significant investments made in the region's economy, and more investments will likely be made in the future.

Low-income countries are more heavily affected by extreme weather events and future climate change than rich countries. This discrepancy is known as an "adaptation deficit" (Frankhauser and McDermott, 2014) is another constraint. This largely occurs due to inaction or lack of timely response. Due to the limitation of funding, the draining of the water from the potential GLOF sites has not been carried out. Tsho Rolpa and Imja glacial lakes are being drained. These are the residual risk and limits and constraints to adaptation and risk mitigation measures.

Many other examples can also be cited. The inability to recover and reclaim flooded land and infrastructure, the inability to continue to grow particular agricultural produce in the flooded area. Another example could be the rising temperatures causing drought and erratic rainfall may lead to major crop losses proving disastrous for communities whose livelihoods are largely dependent on agriculture. Some farmers and farming systems may find innovative ways to adapt, for example, through adopting water submergence varieties, increasing their locally adapted crop diversity, using early warning systems to timely planting and harvesting, or through building dykes/bioengineering measures to protect the crops from floods. However, above certain temperatures, crops fail to pollinate or set seed, the rain fails to arrive, and the land may even turn to desert, resulting in permanent loss of livelihoods. These residual



impacts are important to account for and address adding to L&D (Van der Geest and Schindler, 2017).

There are also limits to adaptation and DRR technology and practices. For example, the Early Warning System (EWS) has been effective to save the lives of thousands of people in Nepal due to improved flood hazard monitoring and communicating the information beforehand. However, there will still be some losses and damages with regards to properties like land, houses, local infrastructure, and livestock (big). This limits the ability of communities to fully cope, let alone adapt to the impacts of flooding in Nepal.

Another major constraint of adaptation is the lack of financial resources. Although the adaptation and DRR options are identified, it has been almost impossible to address all the risks and vulnerabilities of communities. External support has been limited to few areas. In many cases, communities themselves adopt autonomous adaptation actions. The severity of climate change impacts constrain the effectiveness of action and reduces L&D. These deficits or limited resources and limited timely interventions lead to the accumulation of risks and more impacts.

### **Step 8.3. Assessing: Unavoidable Risks (cannot be avoided)**

An unavoidable impact of L&D that cannot be addressed either by mitigation or adaptation is extreme event risks which no adaptation efforts can help in preventing the physical damage (Verheyen and Roderick, 2008). One of the reasons is that some adaptation measures cannot be pursued and consequential L&D remain. Key questions to understand this are:

- Are there risks and impacts beyond adaptation and DRR responses? How and why?
- What are the implications of these unavoidable risks to human and natural systems?
- How can these unavoidable risks be addressed?

One example of the unavoidable risk is glaciers melt in Nepal. Likewise, sea-level rise is another example for coastal countries. Glacier melting is happening and glaciers will retreat faster in the future with major implications to millions of people downstream in terms of L&D caused due to GLOF events, lack of access to drinking water, limited access to irrigation, negative impact on hydropower, and changes in river flow dynamics that affect the riverine ecosystem. Changes in the volume of glacial lakes mirror changes in their source glaciers. In the 33 years between 1977 and 2010, glaciers in Nepal have shrunk in area by almost a quarter of their initial area (Bajracharya et al., 2014). Over this period, the number of glacial lakes in the Koshi basin has increased from 1,160 in 1977 to 2,168 in 2010; their total area has increased from 94.4 km<sup>2</sup> to 127.6 km<sup>2</sup> (Shrestha et al., 2017). The number of lakes has increased by 86.9%, and the total lake area by 35.1%.

Glacier melting has major impacts on water availability, the nature of disasters, and other socio-economic activities (hydropower, irrigation, drinking water and industrial use of water), including mountain culture and tradition. These impacts will lead to both economic and non-economic costs.

## **Step 9. Identifying Other Drivers of Loss and Damage**

### **Step 9.1. Assessment of Climate-induced Displacement**

Climate change-induced weather events (too much and too little rainfall), gradual changes in average temperatures, and sea-level rise can trigger displacement and migration. Changes such as rising heat due to spikes in temperature and humidity could directly affect people and trigger them to move to areas where the heat index is lower. Droughts that may lead to the drying up of springs can drive people to migrate. In Nepal, lack of drinking water is already leading households' move from where they live in the hills to new places where drinking water supply is more reliable. River flooding, on the other hand, does result in immediate displacement but it may not trigger permanent movement. Permanent inundation, water-logging, and bank cutting, on the other hand, often do result in permanent movement. Though migration is a major phenomenon in Nepal, the movement of people impacted by climate-related threats is not systematically documented. Extreme weather events contribute to the rising migration increasing food insecurity and destroying arable and usable land (IOM, 2016). This limitation needs to be addressed because migration patterns influence the ability of the country to achieve its adaptation goals. Even in normal times, population displacement is a major social and development challenge for any country as migrants face a sense of insecurity in their new places of resettlement. Generally, the migrant population tends to be excluded from basic services, disaster preparedness, and mitigation support and thus faces greater threats (Ramirez et al., 2021).

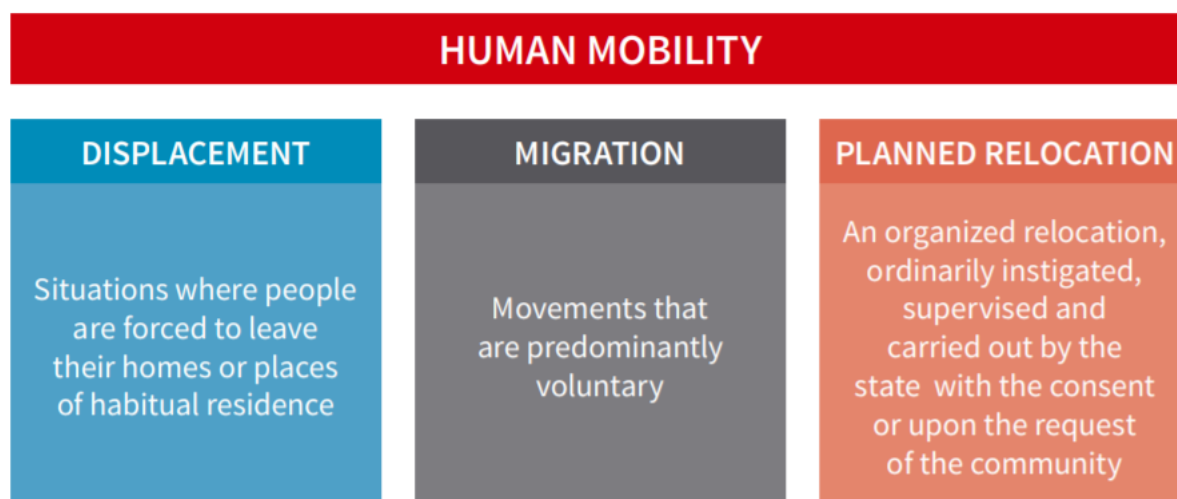
In global climate change negotiations, formal recognition of climate-induced migration and displacement is lacking even though displacement and migration are often major climate change-induced L&D. There is no universally agreed definition of climate-induced human mobility (Warner, 2010). Climate-induced migration and displacement were first mentioned in the UNFCCC documents in 2008 and then brought up again at the 14<sup>th</sup> COP in Poznań and included in Paris Agreement as migration and human mobility. It broadly refers to the movement of people driven by sudden or progressive changes in weather or climate. Such movement can include temporary and permanent, seasonal and singular, as well as the voluntary and forced movement of people. "Climate change is projected to increase the displacement of people throughout this century. The risk of displacement increases when populations that lack the resources to migrate experience higher exposure to extreme weather events, in both rural and urban areas, particularly in low-income developing countries. Changes in migration patterns can be responses to both extreme weather events and longer-term climate variability and change, and migration can also be an effective adaptation strategy (IPCC, 2014). The distinction between displacement and migration is as follows in **Tables 18 and 19**.

**Table 18: Displacement and Migration**

<b>Displacement</b>	<b>Migration</b>
Displacement is a situation in which people are forced to leave their homes or place of residence. Displacement is associated with intensive risk, where the occurrence of a disaster event is the primary driver of movement. It can take place within or across borders.	Migration is usually associated with extreme risk and can take place within or across borders. The decision to move is complex and often linked to multiple drivers, including, but not limited, to climate change. To some degree the decision to move is voluntary.

Source: Advisory Group on Climate Change and Human Mobility, 2014

**Table 19: Displacement, Migration, and Relocation**



Source: IOM, 2014

The issue of climate change and mobility, an important aspect for Nepal reflects multiple relationships between the two processes. Likely, the numbers of people moving internally to cities and across borders will rise over the coming decades (Milan et al., 2015). Some displaced people will remain within their own country or region, and most are likely to head to urban centers (DST, 2008). Some will migrate to other countries. The impacts of climate change intertwine with other drivers of change to exacerbate the vulnerability of people across the country and affect the migration patterns of many. For example, some inhabitants from hill settlements that face water scarcity will move to newer locations with easier access to water. Many others may decide to move to urban areas seeking new employment opportunities. At the same time, as the temperature rises, people may move to the hills, seeking the comfort of its cooler environment. In this way, climate change may alter the pattern of migration, both in the short and the long terms. Climate change spawned impacts thus would work on pre-existing conditions and add to L&D.

### **Step 9.2. Nepal Migration: Historical Context**

Migration from Nepal’s rural areas has not only increased significantly but also changed in many ways. New labor markets in Southeast Asia and the Middle East, many of which pay better wage rates and requiring greater levels of skill than does India, have opened up for Nepali migrants (Adhikari & Hobley, 2011). This shift in destination from low-paying to high-paying countries has increased the earnings of migrants and the remittance they send home. Since the early 2000s, there has been an increase in the volume of Nepali workers headed to the Gulf countries and Malaysia for temporary employment. In 1993/94, the Department of Foreign Employment (DOFE) issued 3,605 labour approvals. A decade later, in 2003/2004, the number increased to 106,660, and in 2013/14 to 519,638. Since 2013/14, however, the volume of annual outmigration has been decreasing. It was 354,098 and 236,208 in 2017/18 and 2018/19 respectively. The financial remittance they send has significantly increased from US\$ 2.54 billion in 2010/11 to US\$ 8.79 billion in 2018/19 (Nepal Labour Migration Report, 2020). In addition, opportunities in urban areas within the country itself have served as a “pull factor” for in-country migration, increasing the rate of urbanization. People’s mobility has increased, but, as explained above, it is hard to attribute migration and displacement directly to climate change and label it as part of L&D.

The COVID-19 pandemic has introduced one more complexity. To contain the spread of the pandemic, GoN introduced a “lockdown” of social and economic activities. This led to the

closure of jobs mostly in the informal sector. Many migrants working in this sector lost their jobs. This happened both in Nepal and in countries where Nepali migrants worked. According to NPC (2020), about 708,000 individuals have lost their jobs either temporarily or permanently due to COVID-19. These numbers add to the unemployed population estimated at 900,000. An estimated 500,000 have entered the labour market. Nepali migrant workers returning to Nepal number 255,000 and 75,000 workers are unable to go for foreign employment due to the shrinking global demand. While putting pressure on Nepal's labour market, these will increase impacts on the economy, public health systems, and already stressed local employment. In many cases, historically poor and marginalized groups across gender, caste, and ethnicity categories will face greater challenges in accessing services and jobs. In this new context, climate change will lead to much higher L&D.

### Displacement

In the past, Nepal experienced many floods and landslide events that have caused great L&D across the country. The 1953 landslides and flash floods in the hills of central Nepal were the first recorded climate-related L&D. The then government encouraged the affected families to resettle in the Chitwan Valley, which had just been opened up as an area of new settlement after malaria was eradicated with the application of Dichlorodiphenyltrichloroethane (DDT).

Not only landslides and floods but also drought has forced many families to move from their villages voluntarily. In 2016, the village of Samjong in Nepal's Upper Mustang District at an elevation of 4,100 m, facing persistent drought conditions for almost a decade, had to be relocated to the village of Namashung in the same region. Many families from the hill districts of Paanchthar in the east and Gulmi in the west have moved due to drinking water shortages. Villagers from Yashok (Panchthar) region (NPC, 2013) migrated to Jhapa, Morang, and Sunsari districts in the Tarai, while those from Gulmi migrated mostly to Butwal Municipality, Rupandehi District, and a few to Pokhara Municipality, Kaski District. From Gulmi some families also migrated to the districts of Kapilvastu, Nawalparasi, and Dang. Though some families have moved to new places they have not sold their properties in their places of origin.

In other cases, families have abandoned their place of living, finding no buyers for their land, houses, or cattle. Utensils are abandoned and houses are in a dilapidated state as families simply lock the door and leave their property with no caretaker. The major distinction between migrants from Gulmi and those from Panchthar is that the latter do not expect that they will ever return. The former group, however, expects to return when the water situation improves and they are hopeful that it will. Migrants from Panchthar who work in the paddy fields of Jhapa and Morang on a contractual basis say that they have no desire to return to their birthplaces. These are rather micro-level anecdotes but do point to larger level policy questions as GHG continues to be emitted at a faster pace, their concentration goes up leading to higher average global temperature and climate change. The displacement of the locals of Kavre and Panchthar for drought stress, Mahottari for floods, Udayapur for landslide, and Gulmi for the flow of emigrants is illustrated in **Table 20** (NPC, 2013).

**Table 20: Number of Households Displaced Due to Environmental Stressors.**

	VDC/Municipality	Displaced households (no)	Reference period	Destination
Panchthar	Yashok	20	May 2013	Jhapa, Morang, Sunsari
	Ranigaon	16	April – June 2013	
	Syabargumba	200	2001- 2013	
Udayapur	Saune	10	7 households after 2001; 3 households before	Nearby places

	Hardiya	200	Some before 2000; some during 2004 floods; many after 2008 floods	They have settled on the bank of the river, but move back when the plain gets flooded.
	Jogidaha	100		
	Sundarpur	200		
<b>Mahottari</b>	Kishannagar	10	Some households before 2000, some during 2004 floods, many of them after flood of 2008	Settled on the riverbank but move back when the plain gets flooded.
	Gonarpur	150		
	Kaluwa	100		
	Bagaiya	150		
	Bhataliya	100		
	Jaleswor municipality	100		
<b>Kavre</b>	Panchkhal	4	April – June, 2001-2013	To the valleys of the respective VDCs
	Sathighar BHagawatisthan	78		
<b>Gulmi</b>	Dauwa	40	After 2008	Baletaksar, Butwal, Palpa
	Baletaksar	4	Within the last 2-3 years	
	Jaisithok	4	April – June 2013	
	Rimuwa and Bamgha	133	In the last 2-3 years	

The study has identified several households being displaced due to drought, landslides, and floods. It showed that most families from the hill districts of Panchthar and Gulmi were displaced after the water shortage became severe. Villagers from the Yashok region had migrated to Jhapa, Morang, and Sunsari districts in the Tarai, while those from Gulmi went to Butwal Municipality, Rupandehi District, or, in fewer numbers, to Pokhara Municipality, Kaski District, and the neighboring districts of Kapilvastu, Nawalparasi, and Dang.

Should climate change-induced migration happen on an even larger scale across Nepal, a new policy response would be required (Adhikari et al., 2021). The displacement thus induced will be a new complex layer on the migration landscape and merits much deeper analysis to understand its implications for human mobility. These lessons can inform international discussions on development, disasters, and climate change so that human mobility is considered in ways that offer clarity on various aspects of human mobility and displacement. They should help avoid ambiguity about traditional forms of displacement and those triggered by climate change as part of L&D. Currently existing provisions send confusing messages to national governments, which try to implement them in line with their development objectives. In the evolving international climate regime and national policy environments, inquiry into displacement dynamics is an important opportunity to address the needs of vulnerable groups who are likely to be forced to move. That said, there are difficult conceptual challenges in assessing displacement as an element of climate change-induced L&D.

## 5. Responding to Loss and Damage

### 5.1. Approaches to Minimize Loss and Damage from Climate Change

Ways to reduce L&D from climate change include increasing resilience before the occurrence of an extreme weather or slow-onset event – for example, by strengthening flood defenses – and establishing mechanisms to provide financial or social protection support to those who have already experienced L&D. It can include technology and practices, finance, policy, and legal measures, and mainstreaming climate change resilience across all investments and policy decisions (Byrnes and Surminski, 2019).

The Comprehensive Risk Management Framework (**Figure 19**) suggests that targeted approaches to avoid and minimize L&D from climate change impacts should build on sustainable development. These tools should aim at reducing vulnerability.



**Figure 19: Comprehensive risk management framework**

Source: Roberts and Pelling, 2018

Literature suggests that there are different ways of responding to L&D depending on its nature (**Table 21**). Mostly, incremental and transformative options are suggested. The incremental options are those that are conventionally being implemented through DRR and CCA programmes, which address specific risks and help minimize potential L&D. Some examples include mitigation measures such as building check dams to prevent erosion, paying a premium for agricultural insurance, conservation of degraded ponds, etc. The transformative options include approaches that change the system so that people and livelihoods exposed to risks are safeguarded. These approaches include relocation of settlement from landslide-prone areas, providing people access to new livelihood options such as the shift from traditional subsistence farming to the service sector, etc.

**Table 21: Responding to Loss and Damage**

Nature of Loss and Damage	Ways to Address Loss and Damage
<p><b>Avoidable</b></p> <p>Impacts due to inadequate mitigation, an adaptation of risk management</p>	<ul style="list-style-type: none"> <li>• Reduce GHG emissions</li> <li>• Remove constraints to adaptation</li> <li>• Improve the effectiveness of adaptation</li> <li>• Enhance disaster risk reduction (preparedness)</li> <li>• Increase resilience and coping capacity</li> </ul>
<p><b>Unavoidable</b></p> <p>Mitigation, adaptation, or risk management are ineffective, for example, due to locked-in emissions</p>	<ul style="list-style-type: none"> <li>• Social protection and safety nets</li> <li>• Resettlement</li> <li>• Assisted migration</li> <li>• Insurance solutions</li> <li>• Compensation</li> </ul>

Source: Van der Geest and Schindler, 2017

An approach to dealing with risk is using appropriate techniques to be better prepared when a hazard strikes and reduce the impacts. Such actions may involve the promotion of activities that minimize the adverse effects of a hazard, protecting, for example, schools, health posts, and communication towers. Installing a flood warning system is one example of preparedness. The other approach to dealing with risk is shifting the burden of impact to another party through insurance. A farmer, for example, may contact a local microfinance institution, self-help group, or insurance company to cover some of his/her risk of crop failure.

**Insurance schemes: An example of risk transfer**

Insurance provides financial compensation to those suffering from a failure by transferring risk to a company. In this way, insurance protects subscribers from financial losses. The transfer occurs through an insurance policy that is a contract between the insurer and the insured. In such a policy, a person who buys insurance pays a regular premium as a service, and the money is paid back to him or her if a failure occurs or something unfortunate happens.

Generally, there are two types of insurance: a) life insurance and b) non-life insurance. Life insurance is a protection against the loss of income that would result from the sudden death of the insured person. It can be further categorized into a) term life insurance and b) whole life insurance. The term life insurance stays in effect for a specified period whereas the whole life insurance normally covers an individual until his or her death. Non-life insurance is mainly concerned with the protection of L&D other than life, like the damage to houses and crops.

In Nepal, the insurance industry started in 1947 with the establishment of Nepal Insurance Company Limited. An Insurance Act was enacted in 1949 that led to the establishment of many insurance companies. In 2000, there were nine working insurance companies in Nepal (Gurung, 2010). That number has now risen to 40. 19 of these deal with life insurance, 20 with non-life insurance, and one offers both life and non-life insurance. In terms of ownership, three companies are fully owned by foreign insurance companies, 18 are under private ownership and the GoN owns one company. The total number of branches of these insurance offices is 340. The subscription to insurance policies in Nepal shows an increasing trend. It is said that the performance of Nepali insurance companies both in life and non-life insurance is satisfactory. It is also said that the greater the presence of insurance companies, the greater the possibility of economic development as the number of institutional investors increases with the rise in opportunities for insurance.

The agriculture shared 26.2% of Nepal's GDP in 2019/20 and an estimated 25.8% in 2020/21 (MoF, 2020), it is the main basis for the livelihoods of 66 percent of the population who are smallholders practicing traditional farming. However, agriculture is vulnerable to the vagaries of weather, and climate change is adding new risks. As the impact of climate change grows, productivity will drop and the smallholders' livelihoods will suffer. To minimize the damages that likely will follow, agriculture insurance can be helpful. It will provide compensation to farmers for commodity damages and enable them to adopt newer options (useful technologies to enhance productivity, for example).

An increase in awareness among farmers about agriculture insurance and government initiatives have led to the growth of insurance businesses. The development of agriculture insurance in Nepal was initiated in 2013 with the introduction of the 'Crop and Livestock Insurance Directive 2013'. GoN subsidizes 75 percent of the premium for agricultural insurance. Insurance companies collaborate with local microfinance institutions and work to increase the access of farmers to agricultural insurance. The Insurance Board has assigned mandatory areas of work to general insurance companies and urged them to provide agricultural insurance services in all districts.

Presently, agricultural insurance covers almost all major crops and livestock products with subsidies and compensation in case of complete or partial loss or damage. Agricultural insurance cover 26 products under animal categories like goats, fish, birds, cow/buffalo, pig, horse category, insects, and other domestic livestock. Crop insurance includes rice, ginger, orange, turmeric, mushrooms, and other crops (Agriculture Insurance Directives, 2077). The Medicinal and aromatic plants are also covered. The agricultural insurance portfolio as a proportion of the total insurance portfolio has been increasing; it is now about 10 percent of the total. 20 insurers are authorized to sell insurance schemes throughout Nepal. Their premium rates differ depending on the type of business insured.

In response to the Covid-19 pandemic, the Insurance Board of Nepal released a standard for implementing Covid-19 insurance schemes across the country. The government announced that for the fiscal year 2020/21 the Covid-19 insurance scheme was free for public servants but paid for by the government. The terms of this insurance policy are similar to those of the insurance policy issued for critical illness. This policy is divided into two categories in terms of the face amount offered: (i) Category A and (ii) Category B. The key features of Covid-19 insurance coverage are illustrated in **Table 22** below:

**Table 22: Premium Details**

Details	Category A	Category B
Face Amount	Rs. 100,000	Rs. 50,000
Premium	Rs. 1,000/person	Rs. 500/person



	Rs. 600/person for insurance coverage of all family members	Rs. 300/person for insurance coverage of all family members
Grace Period	15 days from the date of the commencement of the policy for the insurance claim	
Claim	The insured can make insurance claims after they test positive in a PCR test for Covid-19	

In Category A, an individual is charged NPR 1,000 to register for the scheme, which is worth up to NPR 100,000 per person, and NPR 600 is charged for each member of a family. In Category B, an individual is charged NPR 500 for the scheme, which is worth up to NPR 50,000 per person, and NPR 300 is charged for each member of a family.

When coronavirus insurance schemes were first introduced in April 2020, Nepal had very few cases. It looked as if the country was not going to be severely affected, and insurance companies launched their schemes with this assumption. As the total number of cases has exceeded 635,188 as of June 29, 2021, this policy has come under serious stress.

In Nepal, property insurance provides coverage against L&D caused by earthquake shock, fire, landslides, and floods. Insurance schemes depend on the valuation of properties and the consideration of risk factors. People rarely ensure their properties as it appears to be a gamble for them. Damage may happen the day after the purchase, or may not happen for years or never. Thus, many people show little interest in buying insurance. According to the Insurance Information Institute, less than US\$3.50 is spent per capita annually in Nepal on property and casualty insurance against nearly US\$ 2,300 spent each year in the U.S. (UNISDR, 2015).

Insurance can thus play a role in compensating for L&D due to climate change. Its use would require changing operational rules, establishing pre-warning systems, and reforming policy. Nonetheless, questions about the limits of insurance in tackling threats from climate remain. How will families at the highest risk, who also have the lowest incomes, afford insurance? How do existing insurance practices provide safety from the more frequent and destructive impacts due to climate change? These questions need answering.

At a theoretical level, social perceptions of risk are also important to recognize. Government departments seek to minimize risk, while the market takes risks to make a profit. Environmental groups, on the other hand, emphasize the high risks of the chosen approach and the failure of the government to inform the public about the adequacy and/or inadequacy of its strategies. Farmers usually live with risk. The recognition that there are diverse perceptions of risk helps keep the policy landscape plural in dealing with the challenges of complex environmental problems such as that of assessing L&D and in designing, and taking adaptive actions, and avoiding maladaptation (Linnerooth-Bayer et al., 2013).

## 5.2. Developing an Action Plan for Responding to Risks

While there are several measures already implemented in Nepal through various projects and programmes for resilience building, risk reduction, preparedness, and risk transfer, the purpose of developing an action plan or responding to risks is to identify options that can deal with residual impacts and risks, which could, otherwise, potentially result in loss and damage. The options to address loss and damage can be classified into incremental, fundamental, and transformative. The following are some of the examples of the options proposed by the study carried out by Traction Action Nepal (Singh et al., 2021).

**The incremental options** are those that are conventionally being implemented through Adaptation and DRR programmes, which address specific risks and help minimize potential loss and damage. Examples include mitigation measures such as building check dams to prevent erosion, paying a premium for agricultural insurance, and conservation of degraded ponds.

**The fundamental options** include unconventional approaches to dealing with risks such as distribution of flood-tolerant paddy seeds and construction of new ponds.

**The transformative options** include approaches that change the system so that people and livelihoods exposed to risks are safeguarded. These approaches include relocation of settlements from landslide-prone areas, providing people access to new livelihood options such as the shift from traditional sustenance farming to the service sector.

The identification of options depends upon the socio-economic, technological, and ecological aspects that should be assessed based on the institutional and resource capacities available and then plan approaches to increase the missing capacities.

### 5.3. Nepal's Position in International Negotiations and Related Discussions

The 2015 Paris Agreement called upon all nations together to adopt ambitious efforts to mitigate climate change-causing greenhouse gases (GHGs). The agreement also calls for enhancing support for developing countries so that they can adapt to the impacts of climate change. GoN submitted its second NDC in 2020 under the Paris Agreement for the 2021-2030 period, under Articles 4.2 and 4.11 and Decision 1/CP.21 paragraph 23 and 24, and other relevant provisions of the Paris Agreement. The NDC takes into account the principle of common but differentiated responsibilities and respective capabilities, in light of national circumstances. Nepal envisions achieving socio-economic prosperity by building a climate-resilient society. The strategy will present a vision towards net-zero greenhouse gas emissions by 2050.

An important area of interest to the GoN as part of the policy is assessing climate-induced L&D. Nepal's National Climate Change Policy 2019 and Environment Protection Regulations 2020 also emphasizes the need to conduct research on the L&D associated with climate change impacts and implement measures to reduce climate change-related vulnerabilities. NAP is under preparation. NAP aims to reduce the country's risks and vulnerability to climate change and facilitate the integration of climate change adaptation into policies, programs, and activities across all sectors and levels. NAP process considers the country's particular climatic and geographic characteristics as well as opportunities and challenges associated with climate adaptation and development. As part of NAP, the government recently completed the VRA. The VRA has generated evidence showing that the impact and L&D from climate-induced disasters are massive in Nepal and will increase in the future.

There is clear evidence that climate impacts will be more intense. Many of the damaging extreme weather events of recent years will become routine. For the LDCs facing the greatest challenges from climate impacts, risks, and vulnerability, a long-term climate response will need to go beyond reducing emissions. The L&D agenda is still not advancing as per the expectations of countries like Nepal. The LDCs are fighting hard to ensure all parties recognize the need for scaled-up action and support for L&D. This includes understanding where the limits of adaptation exist in different contexts and identifying how technical, capacity

building, and financial support could be provided. The following are some of the expectations of Nepal from global negotiations:

- **L&D as a stand-alone permanent agenda:** There is a need to properly acknowledge L&D in equivalence with mitigation and adaptation. For this, Nepal urges the parties to agree on making L&D a permanent agenda item of the UNFCCC's subsidiary bodies so that they can recommend appropriate decisions to the governing bodies of the UNFCCC and the Paris Agreement.
- **Operationalization of the Santiago Network on L&D:** The COP25 established Santiago Network on Loss and Damage to catalyze technical assistance to developing countries. To operationalize the network, Nepal, as part of the LDCs expects a decision by COP26 on institutional arrangement of the network, including clearly defined mandate and functions and operational resourcing so that it can respond to the needs of the least developed countries.
- **Loss and Damage Finance:** The developed country parties must fulfill their promise to enhance action and support to address L&D as a core function of the WIM. For this, parties need to agree on providing new and additional climate finance and mechanism for L&D so that vulnerable developing countries like Nepal can implement actions for L&D. Similarly, Nepal expects separate L&D finance in the negotiations leading to the post-2025 climate finance architecture.
- **Further Actions:** The COP 26 should come up with a strong decision and recommendation on the inclusion of L&D in the Global Stocktake being conducted in 2023. In addition, Nepal encourages parties to the inclusion of L&D in all the reporting mechanisms of the UNFCCC and the Paris Agreement such as the NAPs, NDCs, Adaptation Communications, and National Communication Reports.

#### 5.4. Existing Information System in Loss and Damage in Nepal

The information available on disaster-related L&D are mostly available from the government database system such as the DRR portal. This system, however, only includes limited information on the economic losses from the disasters after a quick post-disaster damage and loss assessment. This is very quick and based on mostly information gathered from police and local authorities.

The information and database system particularly targeting the assessment of L&D is not currently available. However, in Nepal, three sets of databases related to climate-related L&D are available.

- **Hydro-Meteorology:** Since 1962, DHM has been regularly monitoring climate-related data throughout the country. DHM maintains nationwide networks of 337 precipitation stations, 154 hydrometric stations, 20 sediment stations, 68 climatic stations, 22 agrometeorological stations, 9 synoptic stations, and 6 Aero-synoptic<sup>2</sup>. Besides, DHM

---

<sup>2</sup><http://dhm.gov.np/contents/resources>

also maintains flow and sediment records of rivers. The 1970s and 1980s literature do present watershed level erosion values (Carson, 1985) but recent information on watershed-scale run-off, erosion, and sediment flow remain to be updated. Every year, DHM publishes a summary of data in bulletins and the data is available in electronic form. For the last few years, DHM is involved in community-based flood early warnings and also provides messages on daily weather via social media platforms including mobile phones and the proposed TV channel (MoF, 2021).

**DesInventar.Net:** [www.desinventar.net](http://www.desinventar.net), hosted by UNDRR, includes a systematic database of disasters that have occurred in Nepal from 1971 January to December 2013. DesInventar covers earthquakes, floods, landslides, drought, and epidemic events, and at all scales of disaster impact. It is a system incorporating diverse types of disasters on a regional and national scale. It enables a look to accumulate the climate change-related disasters at national and regional levels. The database includes event, region, district, village, date, cause, description of the cause, source, magnitude, deaths, injured, missing, houses destroyed, houses damaged, victims, affected, relocated, evacuated, losses (US\$), losses (US\$ local), damages at crops in a hectare, lost cattle and damages to roads. The data is mostly collected from newspapers namely Gorkhapatra, the Department of Water Induced Disaster Prevention (DWIDP), and its special bulletins.

**BIPAD Portal:** Nepal's Ministry of Home Affairs (MoHA) has started collecting and archiving data and information of disaster incidents occurring across the country into its DRR portal managed by the National Emergency Operation Centre (NEOC). Named as incident report database includes a) Geographic location of incident b) Incident date c) Incident type d) Human losses: e) Economic damage from 2010 onward. The *bipad* database<sup>3</sup> includes data on death and losses at Palika level collected by Nepal Police's Incident Reporting Mechanism (IRM). During the 2020 monsoon, data on landslide disasters that caused human deaths (gender-disaggregated), injuries, missing, and estimates of total economic loss were recorded and included in the portal. The database yet does not include details of damage to other infrastructure or ecosystems.

## 5.5. Challenges of the Database System in Context of L&D

The disaster database is a good beginning but has several weaknesses that must be overcome systematically. The portal includes limited direct L&D data and does not include non-economic L&D data. Estimating indirect L&D at an operational level is indeed not only difficult methodically but the scale and purpose complicate assessment. The few estimates of indirect L&D are generally available for a specific disaster of a larger scale and are often multiplication of direct losses using subjective assumption.

The other limitation of the database is in capturing the impacts of slow-onset events. There are conceptual challenges to this task. One challenge comes from the time frame to determine the impacts. Non-economic L&D accrue over some time, over many months, years, or maybe decades. How long should such L&D be assessed? Another key question also emerges: How can indirect L&D estimates from climate change be adjusted as weather characteristics change? L&D estimates necessitate iteration, continuous reviews, and updates over weeks, months, or perhaps years after the event. To capture such impacts in the disaster database, revised estimates must be made available regularly. This is a difficult proposition considering already existing challenges of resources and capacity constraints surrounding the development of data architecture.

---

<sup>3</sup> <https://bipadportal.gov.np/>

Although UNFCCC has presented the definition of L&D, the UNFCCC system has not accepted it officially. It is referred to as potential losses. It also refers to avoided losses that did not materialize due to investments in risk management options. This is also true of risk reduction investments made in reconstruction to improve community resilience and support climate change adaptation. Disaster databases do not capture and include such costs. Regardless, disaster losses whether from climate-related or non-climatic hazards are a complex outcome of the intersection of the magnitude of the hazard, exposure to it, the quality of natural ecosystems, infrastructure, the socio-political context of the actors hit, and the rules-in-use as articulated in the conceptual framework. An increase in the number of infrastructures at risk or more population exposed to hazard without an increase in event's severity forced by climate change can also increase L&D. Other range of factors such as actors' preparedness to respond to risk and the support they receive in the process also determine their ability to recover from a disaster.

Unlike the emission of greenhouse gases, whose sources are broadly known, climate-induced L&D does not have one direct impact indicator. Thus, an integrated risk-based framework for disasters spawned by climate variability and climate change may be an entry point for assessing L&D. Such an approach may also find resonance with the disaster risk management approach (Huggel et al., 2013) that has received increasing attention as an accepted methodological framework for assessing climate-induced L&D (Gall, 2015). Because risk is a function of hazard, exposure, and vulnerability, any attempt of assessing L&D from climate change needs to incorporate interplay among these attributes. For climate change-induced L&D, both vulnerability and exposure are important.

Other challenges need to be recognized too. While in disaster risk, immediate impacts are considered, climate change L&D is the outcome of climatic variability and future climate change spawned weather events. Thus, data on future vulnerability and exposure will also be equally important as the outcome of the complex interplay of extreme rainfall, exposure of actors and their vulnerability, natural ecosystem, and infrastructure. While climate change may increase the frequency or intensity of certain climatic events, socio-economic context, human decision-making within the institutional context also determine exposure and vulnerability.

## 6. CONCLUSION AND RECOMMENDATIONS

### 6.1. Conclusion

In Nepal, the L&D due to climate change is increasing. Climate-induced disasters cause around 65% of all disaster-related annual deaths. The average annual economic loss from climate-induced disasters is about 0.08 per cent of the GDP (2018/19 figures at the current price). In extreme years like the 2017 Tarai floods, the economic loss and damage from the single disaster event was around 2.08 per cent of the GDP (2017/18 figures at the current price). Multiple studies have predicted an increase in L&D caused by climate-induced disasters in the future.

The assessment of L&D is necessary. However, it will not be easy to assess them for two reasons. First, the ability to attribute impacts to specific weather events has not been established. Second, there is no globally accepted approach to assessing climate change-induced L&D. Both reasons create wrangling in global negotiations, where legal and political imperatives are likely to pose a major hurdle in making L&D a means to support developing countries.

The study made attempts to assess L&D through literature surveys, expert interviews, and stakeholder consultation. The prevalence of COVID-19 pandemic limited field visits and conducting case studies. The available information and databases are insufficient in assessing climate-induced L&D. Climate science is not well established for it. A standard methodological framework or mechanism for assessing L&D is lacking.

The global debate of L&D has been rooted in the national context and specific to the impacts of climate change that is beyond adaptation and disaster risk reduction. In coping and adapting to the adverse impacts, it is realized that there are limits and constraints to adaptation and DRR measures which often lead to residual risks. Besides, there are unavoidable risks of climate change impacts where adaptation and risk mitigation measures are not feasible.

A country suitable definition of L&D is proposed that includes the actual and/or potential negative manifestations of climate change on sudden-onset extreme events, and slow-onset events; the lack of capacity of people in Nepal's mountains, hills, and Tarai to cope with or adapt; the over-stretched country's natural ecosystem, infrastructure and institutions; and the losses of life, livelihoods, including losses of cultural heritage as a result of the limits and constraints.

Using a systematic method to assess L&D, as envisioned by this proposed mechanism, can help strengthen Nepal's national narrative on climate change impacts to inform the global dialogue on L&D through platforms such as the WIM. Indeed, the WIM needs to address many climate change challenges that developing countries like Nepal face. Inadequate investment in climate science research, limited understanding of the residual impacts, and adaptation deficits about L&D are other challenges that WIM needs to address. This proposed approach can also help GoN develop a transparent L&D assessment process for the UNFCCC, as well as meet reporting requirements of the SFDRR.

This approach could also help Nepal argue and negotiate for additional financial and other supports to deal with climate change-induced L&D in the UNFCCC process. The approach could help strengthen governance to address climate risks and vulnerabilities, build the resilience of water, energy, and agriculture sectors and minimize the disaster risks that people face. The outcomes from the application of the mechanism could also help the private sector

to innovate and invest in climate-resilient solutions such as including expansion of insurance to address L&D.

L&D must be considered as part of Nepal's ongoing comprehensive disaster risk management efforts while seeking support from global UNFCCC architecture as well for climate actions. Nepal needs additional climate finance, technology, knowledge, and intuitional support to deal with increased L&D. Appropriate support can help Nepal's capacity to deal with shocks and stresses, including taking actions to adapt to present and future climate change impacts. At their core, these support activities must enable affected people to recover from the impacts of climate-induced disasters and "build forward better".

## **6.2. Recommendations**

Assessing L&D in Nepal needs to pursue standardizing the process of data collection mechanism within the disaster risk landscape that is now in place in the form of a portal (<https://bipadportal.gov.np>). In addition, Nepal's climate dynamics need to be improved increasing investment in climate science that will assist in building a comprehensive risk assessment approach. These efforts will help minimize exposure, vulnerability, and L&D. It is appropriate for Nepal to pursue a comprehensive approach to the assessment, including climate risk management considering all abnormal weather events that lead to disasters and resulting L&D.

To that end, policymakers and practitioners in Nepal need an approach that allows them to assess L&D caused by anthropogenic climate change, estimate the cost, and design and implement policies to minimize them. The approach proposed includes both rapid onset and slow-onset hazards and provides measures to identify and act to lessen their impacts on people. To institutionalize the process, the following recommendations are proposed:

### **Ministry of Forests and Environment (MoFE)**

- As the nodal agency for climate change, MoFE needs to play a facilitating role in updating vulnerability and risk assessment approaches in addressing L&D. It must, while maintaining regular coordination among MoHA, MoFAGA, NDRRMA as well as the provinces and Palikas, review indicators and the mechanism of assessment through monitoring and feedback for systematic monitoring, updates, and revision.
- MoFE must also advocate/lobby for increased investment at the national, provincial, and local levels to build institutional capacity. This must include a dedicated budget, infrastructure/equipment needed, information and data, and technical capacity support (experts, etc.). This budget should go to identifying sources of vulnerability and residual impacts due to climate change and adaptation deficits, developing strategies for taking remedial actions.
- MoFE must play a major role in expanding the understanding of economic and non-economic L&D and in defining acceptable, tolerable, intolerable risks and adaptation limits.
- MoFE should support facilitating the piloting of the approach for assessing L&D. The piloting should also lead to answering the questions related to institutional architecture that will assess climate change-induced L&D in the country's local and sub-national levels. Some of the actions that need to be undertaken include enhancing in-country capacity to use climate models, developing and ground-truthing climate change and other socio-economic scenarios, and finally developing a more realistic and robust assessment of climate change-induced L&D.

## **Department of Hydrology and Meteorology (DHM)**

- DHM should create, maintain and update a database that covers issues such as collection, indicator consensus, data standardization, synthesis, and storage. Some of the actions that need to be undertaken include enhancing in-country capacity to use climate models, developing and ground-truthing climate change and other socio-economic scenarios, and finally develop a more realistic and robust assessment of climate change-induced L&D.
- DHM needs to prioritize increasing research on climate science. It must consolidate weather information such as temperature, rainfall, and wind to feed into the above assessment. It must also focus on modelling climate, and, in partnership with other agencies, examine climate impacts on various sectors. Data from DHM's satellite, high altitude measurements, and daily and automatic stations must be used to further refine and create new climate scenarios, as well as align them with regional and global scenarios.
- DHM has proposed rainfall thresholds for landslides and floods. These figures are also used in BIPAD portal as a guide. This is a useful starting point but must be linked with other triggers and ambient land conditions for developing a combined general threshold for landslides and floods used for making a realistic assessment.
- DHM must also build on its efforts on impact-based forecasting and now-casting for thunderstorms, cloudbursts, and flash floods.
- In Nepal, the number of rainfall stations needs to be increased (MoF, 2021), an exercise that must consider the overall management of the stations installed and the use, analysis, and dissemination of the data collected. Both additional financial and human resources must be allocated for management.
- In the past, investment has been made in flood warning systems that helped minimize the loss of human lives. It will be helpful to assess the benefits such systems have provided in avoiding L&D. This assessment must estimate increased investments in capacity development for preparedness.
- DHM needs to begin work in developing Nepal Integrated Drought Information Mechanism (NIDIM) as a multi-agency partnership that will coordinate drought monitoring, forecasting, planning, and information at the national, provincial, and local levels. Development of the proposed NIDIM must coordinate with other stakeholders such as MoFE, the Department of Agriculture, the National Planning Commission, and the World Food Program to link the mechanism with dynamics in agriculture and food systems.
- To successfully conduct the above tasks DHM needs continuous institution-building support.

## **National Disaster Risk Reduction and Management Authority (NDRRMA)**

- The DRRMA Act 2017 and its Regulations 2019 encompass disaster risk reduction as well as climate change adaptation actions that can help build synergies between the two streams. NDRRMA must build on its role as a facilitator and coordinate with ministries, departments, and other stakeholders on activities related to risk reduction. To that end, the Authority must effectively coordinate with all levels of government, inter-ministerial arrangements, and the private sector about the needs of risk assessment, risk reduction response, and recovery from climate hazards mainstreaming tasks by ensuring that plans, programs, and decisions made by the National Council for Disaster Risk Reduction and Management and the Executive Committee are implemented.
- Given this challenge, it is prudent for Nepal to continue its effort to develop a robust, transparent, and reliable national mechanism for assessing climate change-induced L&D as part of its larger disaster risk reduction and humanitarian action data



architecture. This mechanism can also help GoN develop a transparent assessment process for L&D for the UNFCCC, as well as meet reporting requirements of the Sendai Framework for Disaster Risk Reduction (SFDRR).

- NDRRMA needs to have a multi-hazard risk trend and scenarios analysis considering both the rapid and slow onset events and their potential implications. A context-specific tailor-made response is needed to address the specific issues of a particular locality and hazard.
- Provide support to Palikas in implementing response measures to mitigate the risks of L&D.

### **Rural and Urban Municipalities and Provincial government**

- Palika officials must be engaged so that they understand the multifaceted aspects of climate change-induced L&D. Making information on climate change, its impacts, and adaptation strategies available to Palikas and local stakeholders in a language that they understand needs to be a continuous process for effective policymaking and applications. To that end, experts and local stakeholders must maintain regular dialogue, keeping the specific context of the Palika in mind.
- All Palikas must prepare a baseline profile with details on infrastructures and natural ecosystems to serve as a reference for calculating economic damage, and gradually include the non-economic costs necessary for assessing total L&D. Combined with hazard maps, the baseline will help in risk reduction actions, including more effective rescue and responses after a hazard strikes.
- The technical staff members of Palika need to be involved in assessing L&D. For example, the Junior Technical Assistant (JTA) of Palika can help assess the agricultural loss due to a disaster incident but need mentoring and capacity-building support. To work on L&D assessment, a dedicated team has to be formed. The team must include data collectors and IT and database support human resources. The Palika must have access to computers, tools, and skills with maintenance support and a dedicated budget.
- It is also important to respond effectively to lower the risks of L&D. It can be done through transformative adaptation and DRR technology and practices.
- The provincial government can specifically play a role in consolidating data and creating a database on L&D by coordinating well with the Palikas.

### **Other agencies**

- Support MoFE/DHM/NDRRMA in creating a database and information collection mechanisms for both economic and non-economic L&D, particularly covering the sectors such as agriculture and food security, health, water and sanitation, and infrastructure.
- Provide support in helping to periodically assess L&D caused due to climate-induced disasters.
- Support in responding to L&D through various techniques and practices.
- Exchanging information, database, and knowledge related to addressing loss and damage issues.
- Helping government to develop country positions supported with strong evidence.
- Helping government to access and mobilize climate financing for addressing L&D.
- Help government to implement response measures to lower the risk of L&D and build resilience.

## References

1. Action Aid (2010). Loss and damage from climate change: the cost for poor people in developing countries. Discussion Paper. Action Aid.
2. Action Aid (2019). Loss and Damage Handbook for community-led assessment of climate-induced loss and damage.
3. Action Aid, CARE, WWF (2015). Loss and Damage: Climate Reality in the 21<sup>st</sup> Century.
4. ADB (2020). Country Integrated Diagnostic on Environment and Natural Resources for Nepal. Asian Development Bank Philippines.
5. Adhikari, J., & Hobley, M. (2011). Everyone is leaving-who will sow our fields?: effects of migration from Khotang district to the Gulf and Malaysia.
6. Adhikari, S., Gurung, A., Chauhan, R., Rijal, D., Dongol, B. S., Aryal, D., & Talchabhadel, R. (2021). Status of springs in mountain watershed of western Nepal. *Water Policy*, 23(1), 142-156.
7. Allen, M. (2003). Liability for climate change. *Nature*, 421(6926), 891-892.
8. Andrei, S., Rabbani, G., & Khan, H. I. (2015). Non-economic loss and damage caused by climatic stressors in selected coastal districts of Bangladesh. Bangladesh: Bangladesh Centre for Advanced Studies. Supported by the Asian Development Bank.
9. Anisimov and Vallejo. (2019). Loss and Damage under the UNFCCC: ways forward for the Warsaw International Mechanism. IDDRI, Issue Brief no. 13/19.
10. Anjum, G. and Fraser, A. (2021). Vulnerabilities associated with slow-onset events (SoEs) of climate change: multi-level analysis in the context of Pakistan. *Current Opinion in Environmental Sustainability* 50: 54-63
11. Bajracharya, S.R., Maharjan, S.B., Shrestha, F., Sherpa, T.C., Wagle, N., Shrestha, A.B. (2020). Inventory of glacial lakes and identification of potentially dangerous glacial lakes in the Koshi, Gandaki, and Karnali River Basins of Nepal, the Tibet Autonomous Region of China, and India. Research Report. ICIMOD and UNDP.
12. Bhattarai, B., Sigdel, R., Gautam, D., Jandug, C. M. B., & Sharma, J. (2020). People's Perception on Climate Change, its Impact and Adaptive Strategies in Kaligandaki Rural Municipality, Syangja, Nepal.
13. Bhowmik, J., Irfanullah, H. M., and Selim, S. A. (2021). Empirical evidence from Bangladesh of assessing climate hazard-related loss and damage and state of adaptive capacity to address them. *Climate Risk Management* 31: 1-15.
14. Birkmann, J. (2013). Measuring vulnerability to promote disaster-resilient societies: conceptual frameworks and definitions, in Birkmann, J. (Ed.): *Measuring Vulnerability to Natural Hazards: Towards Disaster Resilient Societies*, 2nd ed., pp.9–80, United Nations University, New York/Welle, T., & Birkmann, J. (2015). The World Risk Index—An approach to assess risk and vulnerability on a global scale. *Journal of Extreme Events*, 2(01), 1550003.

15. Birkmann, J.; Chang Seng, D.; Krause, D. (2011): Adaptive Disaster Risk Reduction ñ Enhancing Methods and Tools of Disaster Risk Reduction in the light of Climate Change, DKKV publication series No. 43, Bonn.
16. Boda, C. S., Scown, M., Faran, T., Nastar, M., Dorkenoo, K., Chaffin, B., & Boyd, E. (2020). Framing Loss and Damage from climate change as the failure of Sustainable Development. *Climate and Development*, 1-8.
17. Bouwer, L. M. (2019). Observed and projected impacts from extreme weather events: implications for loss and damage. In *Loss and damage from climate change* (pp. 63-82). Springer, Cham.
18. Boyd, E., James, R. A., Jones, R. G., Young, H. R. and Otto, F. E. L. (2017). A typology of loss and damage perspectives. *Nature Climate Change*, 7. pp. 723-729. ISSN 1758-678X doi: <https://doi.org/10.1038/nclimate3389> Available at <http://centaur.reading.ac.uk/81728/>
19. Broberg, M. and Romera, B. M. (2020). Loss and damage after Paris: more bark than bite? *Climate Policy* 20 (6): 661-668.
20. Burton, I., Kates, R. W., & White, G. F. (1993). *The environment as a hazard* (258 pp.).
21. Byrnes, R., & Surminski, S. (2019). *Addressing the impacts of climate change through an effective Warsaw International Mechanism on Loss and Damage*. London: London School of Economics Grantham Institute on Climate Change and the Environment, 16.
22. Calliari, E. (2016). Loss and damage: a critical discourse analysis of Parties' positions in climate change negotiations. *Journal of Risk Research* 1-23. [10.1080/13669877.2016.1240706](https://doi.org/10.1080/13669877.2016.1240706).
23. Carson, B. (1985). Erosion and sedimentation process in the Nepalese Himalayas. *Occasional Paper*.
24. Dahal, P., Shrestha, N. S., Shrestha, M. L., Krakauer, N. Y., Panthi, J., Pradhanang, S. M., ... & Lakhankar, T. (2016). Drought risk assessment in central Nepal: temporal and spatial analysis. *Natural hazards*, 80(3), 1913-1932.
25. Devkota, D. C., Gosai, K.R., & Devkota, D. (2017). Economic impact analysis of current climate change variability and future impacts in the agricultural sector of Nepal. *Nepal Journal of Environmental Science*, 5, 49-56.
26. Doktycz, C., & Abkowitz, M. (2019). Loss and damage estimation for extreme weather events: State of the practice. *Sustainability*, 11(15), 4243.
27. Dow, K., Berkhout, F., Preston, B. L., Klein, R. J., Midgley, G., & Shaw, M. R. (2013). Limits to adaptation. *Nature Climate Change*, 3(4), 305-307.
28. DST, (2008). *Re-imagining the Rural-Urban Continuum: Understanding the role ecosystem services play in the livelihoods of the poor in Desakota regions undergoing rapid change*. Research Gap Analysis prepared by the Desakota Study Team (DST) for the Ecosystem Services for Poverty Alleviation (ESPA) Programme of Natural Environment Research Council (NERC). Kathmandu: Department for International

Development (DFID) and Economic and Social Research Council (ESRC) of the United Kingdom, Published by Institute for Social and Environmental Transition- Nepal (ISET-N).

29. Eckstein, D., Künzel, V., Schäfer, L. and Wings, M. (2020). Global Climate Risk Index 2020. Germanwatch, Bonn.
30. Fankhauser, S., & McDermott, T. K. (2014). Understanding the adaptation deficit: why are poor countries more vulnerable to climate events than rich countries?. *Global Environmental Change*, 27, 9-18.
31. Few, R., Ramírez, V., Armijos, M. T., Hernández, L. A. Z., & Marsh, H. (2021). Moving with risk: Forced displacement and vulnerability to hazards in Colombia. *World Development*, 144, 105482.
32. Frankhauser, S. and McDermott, T. K. J. (2014). Understanding the adaptation deficit: Why are poor countries more vulnerable to climate events than rich countries? *Global Environmental Change* 27: 9-18.
33. Frey, H., Machguth, H., Huss, M., Huggel, C., Bajracharya, S., Bolch, T., ... & Stoffel, M. (2014). Estimating the volume of glaciers in the Himalayan–Karakoram region using different methods. *The Cryosphere*, 8(6), 2313-2333.
34. Gabriel, A. V. S., Pulhin, P. M. and Lasco, R. D. (2019). The State of Loss and Damage Assessment System in the Philippines and Proposed L&D Framework. The Oscar M. Lopez Center for Climate Change Adaptation and Disaster Risk Management Foundation, Inc.
35. Gall, M. (2015). The suitability of disaster loss databases to measure loss and damage from climate change. *International Journal of Global Warming*, 8(2), 170-190.
36. German Committee for Disaster Reduction (Ed.), (2011). Adaptive Disaster Risk Reduction. Enhancing Methods and Tools of Disaster Risk Reduction in the light of Climate Change. DKKV Publication Series 43, Bonn.
37. Gurung, J. B. (2010). Insurance and its business in Nepal. *Journal of Nepalese Business Studies*, 7(1), 70-79.
38. Huggel, C., Stone, D., Auffhammer, M., & Hansen, G. (2013). Loss and damage attribution. *Nature Climate Change*, 3(8), 694-696.
39. Huq, S., Roberts, E. & Fenton, A. Loss, and damage. *Nature Clim Change* 3, 947–949 (2013). <https://doi.org/10.1038/nclimate2026>
40. ICIMOD (2011). Glacial lakes and glacial lake outburst floods in Nepal. Kathmandu: ICIMOD.
41. ICIMOD/UNEP (2002). Inventory of Glaciers, Glacial Lakes, and Glacial Lake Outburst Flood Monitoring and Early Warning Systems in the Hindu Kush -Himalayan Region- Nepal. International Center for Integrated Mountain Development and United Nations Environment Programme.
42. IDS-Nepal, PAC and GCAP (2014). Economic Impact Assessment of Climate Change In Key Sectors in Nepal. IDS-Nepal, Kathmandu, Nepal.

43. International Federation of the Red Cross and Red Crescent Societies (2008) Guidelines for Assessment in Emergencies [online] <http://www.icrc.org/eng/assets/files/publications/icrc-002-118009.pdf> (accessed 23 August 2013).
44. IOM (2014). Human mobility in the context of climate change. International Organization for Migration.
45. IOM (2016). Assessing the Climate Change Environmental Degradation and Migration Nexus in South Asia. International Organization for Migration, Dhaka.
46. IPCC (2012) Summary for Policymakers. Managing the Risks of Extreme Events and Disasters to Advance Climate Change Adaptation, Field, C.B., Barros, V., Stocker, T.F., Qin, D., Dokken, D.J., Ebi, K.L., Mastrandrea, M.D., Mach, K.J., Plattner, G-K., Allen, S.K., Tignor, M. and Midgleyand, P.M. et al. (Eds.), A Special Report of Working Groups I and II of the Intergovernmental Panel on Climate Change, pp.1–19, Cambridge University Press, Cambridge, UK, and New York.
47. IPCC (2014). Working Group II Contribution to the Fifth Assessment Report, Volume 1, Chapter 12, available at: <http://www.ipcc.ch/report/ar5/wg2>
48. IPCC (2018). Global Warming of 1.5°C. An IPCC Special Report on the impacts of global warming of 1.5°C above pre-industrial levels and related global greenhouse gas emission pathways, in the context of strengthening the global response to the threat of climate change, sustainable development, and efforts to eradicate poverty [Masson-Delmotte, V., P. Zhai, H.-O. Pörtner, D. Roberts, J. Skea, P.R. Shukla, A. Pirani, W. Moufouma-Okia, C. Péan, R. Pidcock, S. Connors, J.B.R. Matthews, Y. Chen, X. Zhou, M.I. Gomis, E. Lonnoy, T. Maycock, M. Tignor, and T. Waterfield (eds.)]. In Press.
49. IPCC (2019). IPCC Special Report on the Ocean and Cryosphere in a Changing Climate H.-O. Pörtner, D.C. Roberts, V. Masson-Delmotte, P. Zhai, M. Tignor, E. Poloczanska, K. Mintenbeck, A. Alegría, M. Nicolai, A. Okem, J. Petzold, B. Rama, N.M. Weyer (eds.). In press.
50. Karen MacClune, Kanmani Venkateswaran, Kanchan Mani Dixit, Shobha Yadav, Rajani Maharjan Sumit Dugar, (2014) ISET-International, ISET-Nepal; Practical Action Nepal. Risk Nexus.
51. Kattelman, R. (2003). Glacial lake outburst floods in the Nepal Himalaya: a manageable hazard?. *Natural Hazards*, 28(1), 145-154.
52. Khanal, N. R., Mool, P. K., Shrestha, A. B., Rasul, G., Ghimire, P. K., Shrestha, R. B., & Joshi, S. P. (2015). A comprehensive approach and methods for glacial lake outburst flood risk assessment, with examples from Nepal and the transboundary area. *International Journal of Water Resources Development*, 31(2), 219-237.
53. Klein, R. J., Midgley, G. F., Preston, B. L., Alam, M., Berkhout, F. G., Dow, K., ... & Wolf, J. (2014). Adaptation Opportunities Constraints and Limits. In *Climate change 2014: Impacts, adaptation, and vulnerability* (pp. 899-943). Cambridge University Press.
54. Klein, R. J., Midgley, G., Preston, B. L., Alam, M., Berkhout, F., Dow, K., & Shaw, M. R. (2015). Adaptation opportunities, constraints, and limits. In *Climate Change 2014: Impacts, Adaptation, and Vulnerability. Part A: Global and Sectoral Aspects*.

*Contribution of Working Group II to the Fifth Assessment Report of the Intergovernmental Panel on Climate Change* (p. 899). Cambridge: Cambridge University Press.

55. Linnerooth-Bayer, J., Mace, M. J., & Mechler, R. (2013). 17 Proposal for Insurance for Facilitation of Adaptation. *Climate Change Negotiations*, 374.
56. Man C. (2019). Dry Hills, Full Ponds: Climate Change, Resilience, and Agriculture in Nepal, Unpublished Report submitted to USAID.
57. McNamara, K. E., and Jackson G. (2018) Loss and damage: A review of the literature and directions for future research, December <https://doi.org/10.1002/wcc.564>
58. Mechler, R. and Deubelli, T. M. (2021). Finance for Loss and Damage: a comprehensive risk analytical approach. *Current Opinion in Environmental Sustainability* 50: 185-196.
59. Mechler, R., & Schinko, T. (2016). Identifying the policy space for climate loss and damage. *Science*, 354(6310), 290-292.
60. Mechler, R., Singh, C., Ebi, K., Djalante, R., Thomas, A., James, R., ... & Revi, A. (2020). Loss and Damage and limits to adaptation: recent IPCC insights and implications for climate science and policy. *Sustainability Science*, 15(4), 1245-1251.
61. Milan, A., Gioli, G., & Afifi, T. (2015). Migration and global environmental change: methodological lessons from mountain areas of the global South. *Earth System Dynamics*, 6(1), 375-388.
61. MoF (2018). Economic Survey 2017/18, Government of Nepal, Ministry of Finance
62. MoF (2020). Economic Survey of Fiscal Year 2077/78. Ministry of Finance, Government of Nepal, 2020.
63. MoF (2021). Annual Budget Speech of Fiscal Year 2078/79. Ministry of Finance, Government of Nepal 2021. [https://mof.gov.np/uploads/document/file/Budget%20Speech%20\(Final\)%20Full\\_20210530100738.pdf](https://mof.gov.np/uploads/document/file/Budget%20Speech%20(Final)%20Full_20210530100738.pdf) . (Bullet number 135 of Budget Speech for Fiscal Year 2021/22 has spelled out of conducting weather TV channel)
64. MoF (2021). Annual Budget Speech of Fiscal Year 2078/79. Ministry of Finance, Government of Nepal 2021. ([https://mof.gov.np/uploads/document/file/Budget%20Speech%20\(Final\)%20Full\\_20210530100738.pdf](https://mof.gov.np/uploads/document/file/Budget%20Speech%20(Final)%20Full_20210530100738.pdf)) In fact Budget Speech for the Fiscal Year 2021/22 has spelled out of establishing 30 additional Hydro-met stations.
65. MoFE (2021). Vulnerability and Risk Assessment and Identification of Adaptation Options: Summary for Policy Makers. Government of Nepal.
66. MoHA (2018). Disaster Risk Reduction National Strategic Plan of Action 2018-2030, Government of Nepal
67. MOLESS (2020). Nepal Labour Migration Report, Ministry of Labour , Employment and Social Security Government of Nepal, 2020.

68. MoPE (2017). Vulnerability and Risk Assessment Framework and Indicators for National Adaptation Plan (NAP). Formulation Process in Nepal. Ministry of Population and Environment (MoPE), Kathmandu.
69. Morrison, C., & Pickering, C. M. (2013). Perceptions of climate change impacts, adaptation and limits to adaption in the Australian Alps: the ski-tourism industry and key stakeholders. *Journal of Sustainable Tourism*, 21(2), 173-191.
70. Morrissey, J., & Oliver-Smith, A. (2013). Perspectives on Non-Economic Loss and Damage: Understanding values at risk from climate change. *Loss and Damage in Vulnerable Countries Initiative Report*.
71. NDRRP (2019). Nepal Disaster Risk Reduction Portal. Ministry of Home Affairs. Government of Nepal, Kathmandu, Nepal.
72. NPC (2013). Environmental Causes of Displacement, Published by Government of Nepal, and National Planning Commission with support from UNDP/UNEP in Kathmandu, Nepal in December 2013.
73. NPC (2017). Nepal Flood 2017: Post Flood Recovery Needs Assessment, Government of Nepal, National Planning Commission, Singha Durbar, Kathmandu.
74. NPC (2020). Effects of COVID-19 Pandemic on Foreign Employment and its Impact on the Economy of Nepal. National Planning Commission Secretariat, Kathmandu.
75. Otto, F. E., Philip, S., Kew, S., Li, S., King, A., & Cullen, H. (2018). Attributing high-impact extreme events across timescales—a case study of four different types of events. *Climatic Change*, 149(3), 399-412.
76. Otto, F., James, R. and Allen, M., 2014. The science of attributing extreme weather events and its potential contribution to assessing loss and damage associated with climate change impacts. *Environmental Change Institute*.
77. Singh, P., Shrestha, J., and Acharya, S., 2021. Assessing And Addressing Climate-Induced Loss and Damages In Nepal. Practical Action. Nepal.
78. Rayner, S., & Malone, E. L. (1998). Human choice and climate change: an international assessment.
79. Roberts, E., & Pelling, M. (2018). Climate change-related loss and damage: translating the global policy agenda for national policy processes. *Climate and Development*, 10(1), 4-17.
80. Schinko, T., & Mechler, R. (2017). Applying recent insights from climate risk management to operationalize the loss and damage mechanism.
81. Serdeczny, O./Waters, E./Chan, S. (2016): Non-economic loss and damage in the context of climate change. Discussion Paper 3/2016, published by German Development Institute
82. Shinko, T., Mecher, R., & Hochrainer-Stigler, S. (2019). The risk and policy space for loss and damage: integrating notions of distributive and compensatory justice with comprehensive risk management. *Loss and damage from climate change: concepts, methods and policy options*, 83-110.

83. Singh, P. M., Shrestha, J. Acharya S. and Uprety M. (2020). Assessing and Addressing Climate-Induced Loss and Damage in Nepal, Practical Action, Nepal.
84. Stott, P. A., Stone, D. A., & Allen, M. R. (2004). Human contribution to the European heatwave of 2003. *Nature*, 432(7017), 610-614.
85. Surminski, S., Lopez, A., Birkmann, J. and Welle, T. (2012). Current knowledge on relevant methodologies and data requirements as well as lessons learned and gaps identified at different levels, in assessing the risk of loss and damage associated with the adverse effects of climate change. Background Paper. London School of Economics. London.
86. UNFCCC (2012). Current knowledge on relevant methodologies and data requirements as well as lessons learned and gaps identified at different levels, in assessing the risk of loss and damage associated with the adverse effects of climate change. Technical Paper.
87. UNFCCC (2013). Non-economic losses in the context of the work programme on loss and damage, FCCC/TP/2013/2
88. UNFCCC (2014). UNFCCC Subsidiary Body for Implementation (SBI), FCCC/SBI/2012/INF.14. 2014 (2012)
89. UNFCCC (2019). Climate Action and Support Trends. [unfccc.int/sites/default/files/resource/Climate\\_Action\\_Support\\_Trends\\_2019.pdf](https://unfccc.int/sites/default/files/resource/Climate_Action_Support_Trends_2019.pdf)
90. UNFCCC (2019). Elaboration of the Sources of and Modalities for Accessing Financial Support for Addressing Loss and Damage. Technical Paper. [https://unfccc.int/sites/default/files/resource/01\\_0.pdf](https://unfccc.int/sites/default/files/resource/01_0.pdf)
91. UNFCCC (2019). Introduction to the Warsaw International Mechanisms for L&D. [https://unfccc.int/sites/default/files/resource/Online\\_guide\\_on\\_loss\\_and\\_damage-January\\_2019.pdf](https://unfccc.int/sites/default/files/resource/Online_guide_on_loss_and_damage-January_2019.pdf)
92. UNISDR (2013). 25 April 2015 Gorkha Earthquake Disaster Risk Reduction Situation Report. United Nations Office for Disaster Risk Reduction, 2015.
93. Van der Geest, K. and Schindler, M. (2017). Handbook for assessing loss and damage in vulnerable communities. United Nations University, Institute for Environment and Human Security, Bonn.
94. van der Geest, K., & Warner, K. (2015). Loss and damage from climate change: emerging perspectives. *International Journal of Global Warming*, 8(2), 133-140.
95. Vanhala, L., & Hestbaek, C. (2016). Framing climate change loss and damage in UNFCCC negotiations. *Global Environmental Politics*, 16(4), 111-129.
96. Verheyen, R., & Roderick, P. (2008). Beyond Adaptation. *WWF-UK*, available at [www.wwf.org.uk](http://www.wwf.org.uk)
97. Warner, K. (2010). Global environmental change and migration: Governance challenges. *Global environmental change*, 20(3), 402-413.



98. Warner, K., & Van der Geest, K. (2013). Loss and damage from climate change: local-level evidence from nine vulnerable countries. *International Journal of Global Warming*, 5(4), 367-386.
99. Welle, T., & Birkmann, J. (2015). The World Risk Index—An approach to assess risk and vulnerability on a global scale. *Journal of Extreme Events*, 2(01), 1550003.
100. Wester, P., Mishra, A., Mukherji, A., & Shrestha, A. B. (2019). *The Hindu Kush Himalaya Assessment: Mountains, climate change, sustainability and people* (p. 627). Springer Nature.
101. Wisner, B., Blaikie, P., Blaikie, P. M., Cannon, T., & Davis, I. (2004). *At risk: natural hazards, people's vulnerability and disasters*. Psychology Press.
102. WMO (2009). Climate Observations and Climate Data Management Guidelines. WCDMP No. 68 – WMO/TD-No. 1481. World Meteorological Station.
103. Zommers, Z., van der Geest, K., De Sherbinin, A., Kienberger, S., Roberts, E., Harootunian, G., ... & James, R. (2016). Loss and damage: the role of ecosystem services.

#### Websites

1. <http://dhm.gov.np/contents/resources>.
2. <http://indico.ictp.it/event/a13211/session/7/contribution/35/material/0/0.pdf>
3. <http://www.csc.noaa.gov/rvat/hazardEdd.html>
4. <https://nib.gov.np/affiliated-insurers-2/>
5. <https://nib.gov.np/wp-content/uploads/2019/12/2069-Corp-and-Cattle-Insurance-Directive-1.pdf>
6. <https://nib.gov.np/wp-content/uploads/2021/02/%E0%A4%95%E0%A5%83%E0%A4%B7%E0%A4%BF-%E0%A4%AC%E0%A5%80%E0%A4%AE%E0%A4%BE-%E0%A4%A8%E0%A4%BF%E0%A4%B0%E0%A5%8D%E0%A4%A6%E0%A5%87%E0%A4%B6%E0%A4%BF%E0%A4%95%E0%A4%BE-2076-08-15.pdf>
7. <https://publications.iom.int/books/assessing-climate-change-environmental-degradation-and-migration-nexus-south-asia>
8. <https://reliefweb.int/report/nepal/nepal-climate-change-and-human-mobility>
9. [https://unfccc.int/sites/default/files/resource/01\\_0.pdf](https://unfccc.int/sites/default/files/resource/01_0.pdf)
10. [https://www.iom.int/sites/default/files/migrated\\_files/pbn/docs/Human-Mobility-in-the-context-of-Climate-Change.pdf](https://www.iom.int/sites/default/files/migrated_files/pbn/docs/Human-Mobility-in-the-context-of-Climate-Change.pdf)
11. <https://www.preventionweb.net/organizations/28028>
12. [odi.org/en/publications/climate-change-migration-and-displacement-the-need-for-a-risk-informed-and-coherent-approach/](https://odi.org/en/publications/climate-change-migration-and-displacement-the-need-for-a-risk-informed-and-coherent-approach/)

13. Bullet Point 153 of Budget Speech for Fiscal Year 2021/22 spells out about insurance of Jadibuti (Medicinal and Aromatic Plants).  
([https://mof.gov.np/uploads/document/file/Budget%20Speech%20\(Final\)%20Full\\_20210530100738.pdf](https://mof.gov.np/uploads/document/file/Budget%20Speech%20(Final)%20Full_20210530100738.pdf))

Improved DRAFT

## Annex: Loss and Damage: A case study of flooding of Melamchi

Nepal receives more than 80 percent of rainfall during the monsoon season which starts from the second week of June to the last week of September. Monsoon supports agriculture but also brings soil erosion, landslide, and flood that also leads to disasters and heavy loss of lives and properties every year. Across Nepal from east to west and south to north, in the monsoon, while some parts are highly affected whereas others face low-intensity rains.

On 15<sup>th</sup> June 2021, large parts of Melamchi municipality of Sidhupalchowk district were buried under debris brought by catastrophic floods in the Melamchi and Indrawati rivers. Nepal's Bipad Portal reported that 5 people died, 6 were injured and, 20 were missing due to the flood. Multiple factors triggered by the rain resulted in the catastrophic flood.

Annex Table 1 shows that the monthly average precipitation/rainfall of the Indrawati river basin (in Sindhupalchowk district) for the duration of 1971-1990 and 1998- 2018. It shows that the average rainfall in June from 1971-1990 was 467.9mm and was 409.0 mm for 1998-2018. However, 5 days rainfall data of 5 stations of Melamchi river basin is 101.6 mm on average. Table 2 shows that on 12<sup>th</sup> June Sermathang, Dhap, and Gumthang stations received high rainfall. The rainfall triggered a landslide that blocked the river and when the dam breached flood occurred.

**Annex Table 23 Average monthly precipitation/rainfall in mm of Indrawati river basin for different time intervals**

Month	Jan	Feb	Mar	Apr	May	June	July	Aug	Sep	Oct	Nov	Dec	Avg. Annual
1971-1990	18.2	28.2	47.8	74.5	140.1	467.9	752	675.7	380.3	89.3	13.6	19.5	2707.2
1998-2018	42	56	67	88	195	409.00	714	576	308	90	25	26	2596

Source: data from 1971-1990 referred from Indrawati river basin study report, 1998-2018 climate – data .org

**Annex Table 24 Five days rainfall recorded in 5 stations of Melamchi river basin from June 12-16, 2021**

Station name	12-Jun	13-Jun	14-Jun	15-Jun	16-Jun	5 days total
Chautara	1.2	8.2	4.4	4.2	5.2	23.2
Sermathang	110.2	33	11.8	18.8	29.4	203.2
Bahrabise	13.8	17.8	4.6	4.8	4	45
Dhap	58	34.6	9.2	10.8	10.4	123
Gumthang	60.2	29	8.2	8.6	7.6	113.6
<b>Average rainfall (mm)</b>	<b>48.68</b>	<b>24.52</b>	<b>7.64</b>	<b>9.44</b>	<b>11.32</b>	<b>101.6</b>

Source: NDRRMA- Nepal Flood and Landslide Incident Report 1

The rainfall in the Melamchi river basin obtained from the NASA satellite for 10-15 June 2021 is shown in (Table 3).

**Annex Table 25 Rainfall based on NASA**

Date	10	11	12	13	14	15
Rain (mm)	9.9	22.2	30.3	30.3	123.8	24.4

Source: NASA quoted in reference 6 (<https://www.onlinekhabar.com/2021/06/974746>).

In the Nakote hydrological station in the Melamchi River, the water level had initially decreased from 5m to 3m and then rose to 6m in a short time indicating that the sudden increase would

be a result as indicated by preliminary studies dam breach. The high flood also brought a massive amount of boulders, gravel, and sand. The deluge caused devastation. The earthquake of 2015 has weakened the geology of the Sindhupalchowk district.

The rain on the weak landscape of the hilly terrain led to landslides. From 1981 to 2019 Bhotekoshi and Sunkoshi watersheds has recorded 47 landslides, of which 5 had occurred in non-monsoon months and 42 in the monsoon. Rainfall triggered most of the landslides (Lamichhane et.al 2021).

A study on the climate change impact on diversion strategies of the Melamchi water supply project had projected that the average precipitation in the Melamchi river basin will increase by 6-18% under RCP 4.5 and RCP 8.5 respectively by 2085s (Shrestha & Babel 2017). This will increase the intensity of floods and landslides in the coming years and elevate the cost of economic and non-economic loss in Nepal's fragile districts.

The recent flood also affected Nepal's Manang and Lamjung districts. The disaster led to the displacement of 867 families with 414 houses fully damaged and 97 houses partially damaged. The preliminary economic losses in Melamchi alone were estimated to be NRs 1 billion. The details of loss and damage in the three districts are shown in table 4.

**Annex Table 4 Loss and Damage in 3 districts of Nepal during June 10-16, 2021**

District	Non-Economic losses			Economic losses					
	Dead	Missing	Injured	Fully damaged houses	Partially damaged houses	Hydro power	Road	Bridges	Others
Sindhupalchowk	5	20	6	337	0	1	obstructed in many places	13 suspension, 7 motorable	10 trout farm, 1 green city park
Manang	0	0	0	59	20	1	65km road	5 suspension, 1 bailey	None
Lamjung	0	0	0	18	77	12	damaged at different section	none	2 community building, 1 government building

Source: NDRRMA- Nepal Flood and Landslide Incident Report 1

Bipad portal has reported that 55 dead, 32 missing, and 127 injured throughout the country from April 14 to 25 June 2021 due to climate-related disasters (flood, landslide, heavy rainfall, windstorm, and thunderbolt). 205 houses were destroyed and 130 partially damaged. The economic losses were estimated at NRs 7, 94, 55,830 excluding the loss and damage due to the flood in Sindhupalchowk, Manang, and Lamjung during June 10-15.

It is likely that with climate change, the frequency and intensity of the climate-triggered disaster events will increase. Unless the capacity and strength of disaster preparedness and coping capacity is improved, the poor and vulnerable people have to bear loss and damage in the coming days.

#### Reference

1. Karki, A. (2005). Indrawati river basin study draft report. Consolidated Management Service Nepal.
2. Lamichhane, S., Aryal, K. R., Talchabhadel, R., Thapa, B. R., Adhikari, R., Khanal, A., ... & Gautam, D. (2021). Assessing the Prospects of Transboundary Multihazard Dynamics: The Case of Bhotekoshi—Sunkoshi Watershed in Sino—Nepal Border Region. *Sustainability*, 13(7), 3670.

3. Shrestha, S., Shrestha, M., & Babel, M. S. (2017). Assessment of climate change impact on water diversion strategies of Melamchi Water Supply Project in Nepal. *Theoretical and Applied Climatology*, 128(1-2), 311-323.
4. <http://bipad.gov.np/en>
5. <https://bipadportal.gov.np/damage-and-loss/>
6. <https://www.onlinekhabar.com/2021/06/974746>
7. <https://en.climate-data.org/asia/nepal/central-development-region/melamchi-1061797/t/june-6/>

Improved DRAFT